

Dena Laboratory

MATERNAL SCREENING

CYCLE 9 SAMPLE 6

Explanation of codes used in this report

R - Results removed due to reconstitution error
N - No result returned
C - Result corrected

Authorised by: Stephen Doherty, RIQAS Manager

Issue No: 1

Issue Date: 20/06/2017

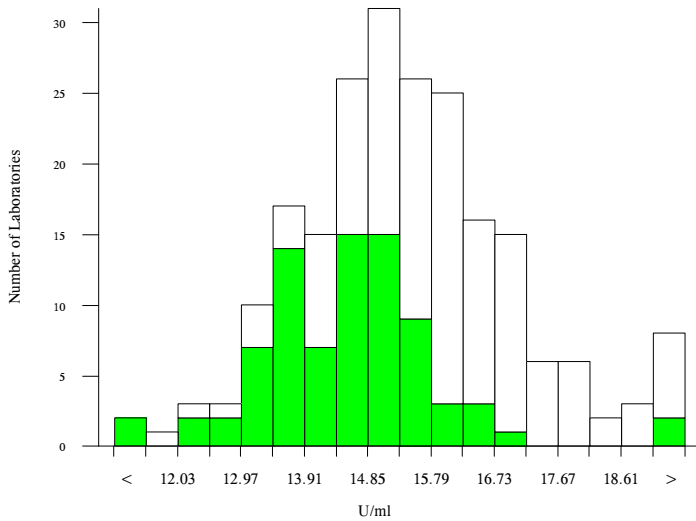
Randox Laboratories Limited
55 Diamond Road
CRUMLIN BT29 4QY
Tel: +44 (0)28 9445 4399
Fax: +44 (0)28 9445 4398
Email: mail@riqas.com

AFP, U/ml

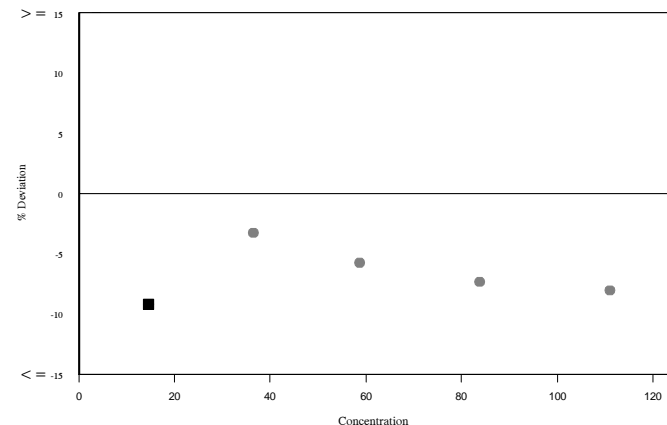
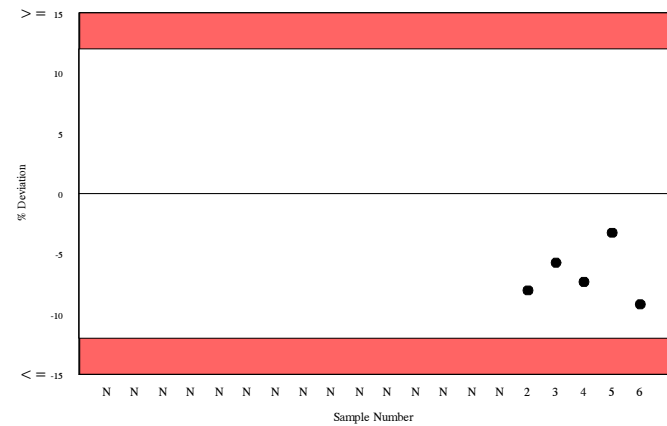
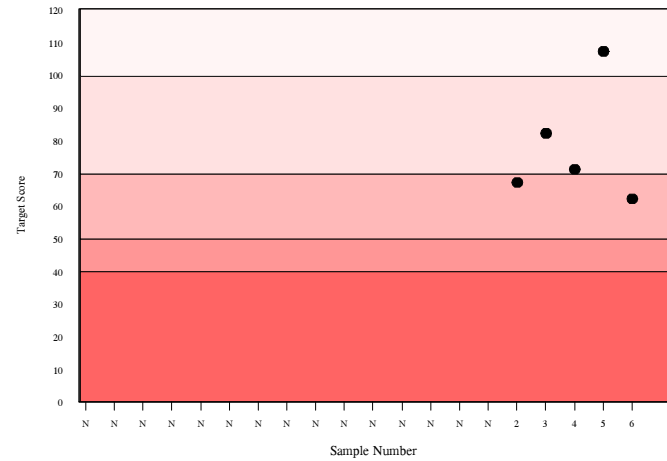
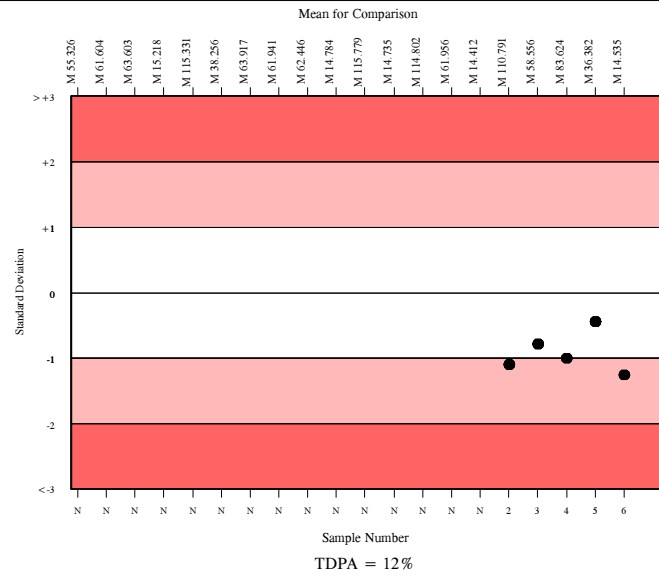
	N	Mean	CV%	U _m	SDPA	Exc.
All Methods	199	15.323	8.2	0.11	1.12	16
Siemens/DPC Immulite 2000/2500	76	14.535	6.3	0.13	1.06	6

▲ Your Result	13.200	SDI	-1.26
		RMSDI	Too Few
■ Mean for Comparison	14.535	TS	62
		RMTS	Too Few
		%DEV	-9.2
		RM%DEV	Too Few

Acceptable limits derived from Biological Variation	21.9%
Acceptable limits of performance for RIQAS	12.00%



Method	N	Mean	CV%	U _m
Siemens/DPC Immulite 2000/2500	76	14.535	6.3	0.13
Perkin Elmer DELFIA Xpress/AutoDELFIA	23	15.962	2.9	0.12
Beckman DxI 600 / 800	23	14.968	6.1	0.24
Roche Cobas 6000/8000	15	17.351	3.8	0.21
Siemens/DPC Immulite 1000	13	14.929	7.7	0.40
Roche Cobas 4000/e411	12	17.051	5.4	0.33
Abbott Architect	9	15.078	1.7	0.10
Beckman Access/LXi725	8	15.625	3.8	0.26
Siemens Centaur XP/XPT/Classic	8	17.213	6.9	0.53
Brahms Kryptor	4	15.011	5.6	0.52

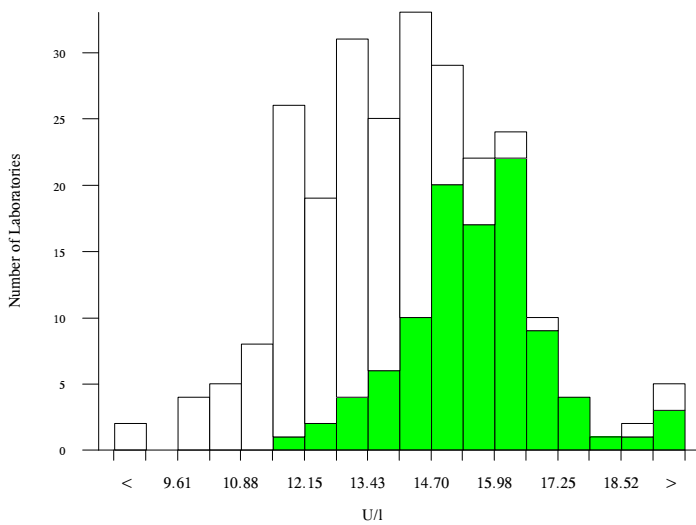


hCG, free beta, U/I

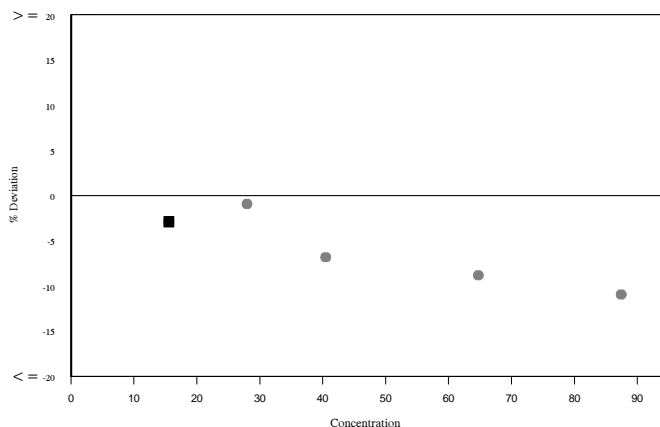
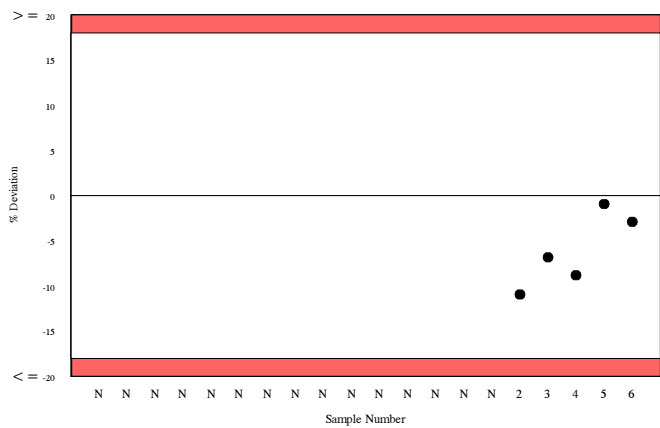
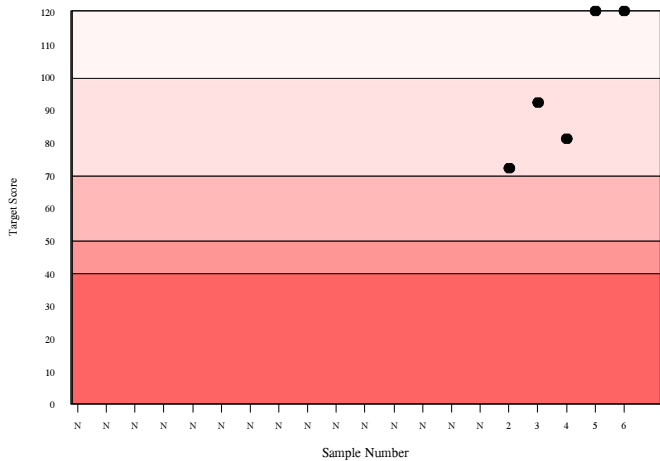
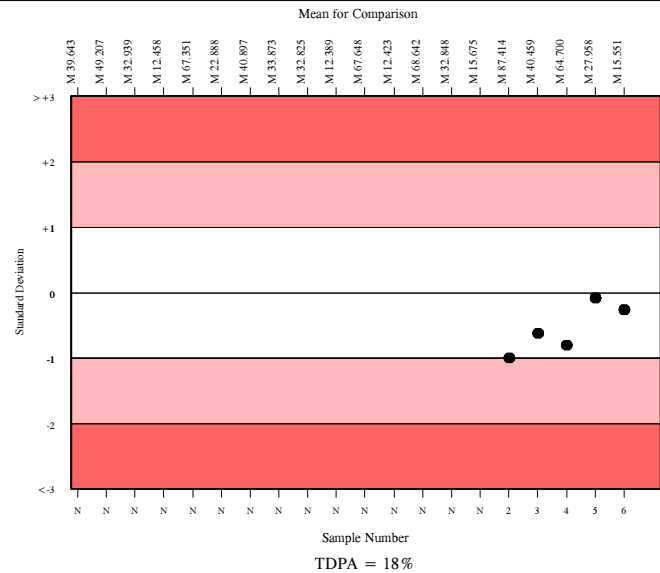
	N	Mean	CV%	U _m	SDPA	Exc.
All Methods	236	14.069	12.1	0.14	1.54	14
Siemens/DPC Immulite 2000/2500	90	15.551	6.7	0.14	1.70	10

▲ Your Result	15.100	SDI RMSDI	-0.27 Too Few
■ Mean for Comparison	15.551	TS RMTS	120 Too Few
		%DEV RM%DEV	-2.9 Too Few

Acceptable limits derived from Biological Variation	N/A
Acceptable limits of performance for RIQAS	18.00%



Method	N	Mean	CV%	U _m
Siemens/DPC Immulite 2000/2500	90	15.551	6.7	0.14
Perkin Elmer DELFIA Xpress/AutoDELFIA	38	13.780	5.3	0.15
Roche Cobas 4000/e411	32	12.172	5.6	0.15
Roche Cobas 6000/8000	31	11.984	5.6	0.15
Brahms, Krytor	15	14.667	4.3	0.20
Siemens/DPC Immulite 1000	14	14.455	7.1	0.34

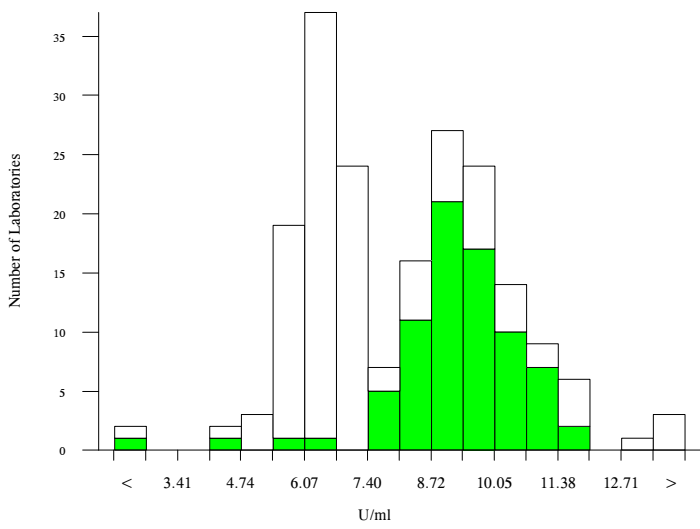


hCG, total, U/ml

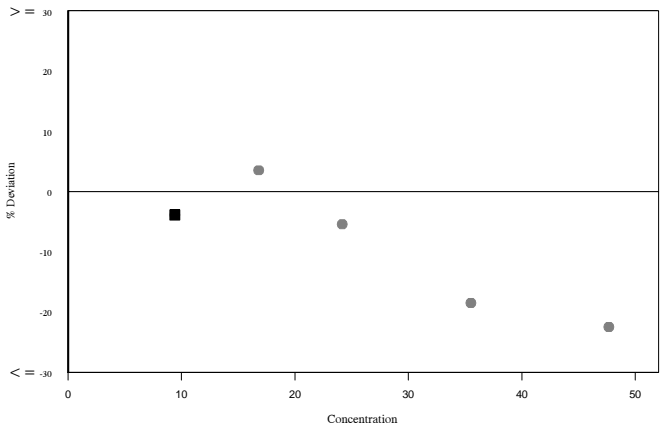
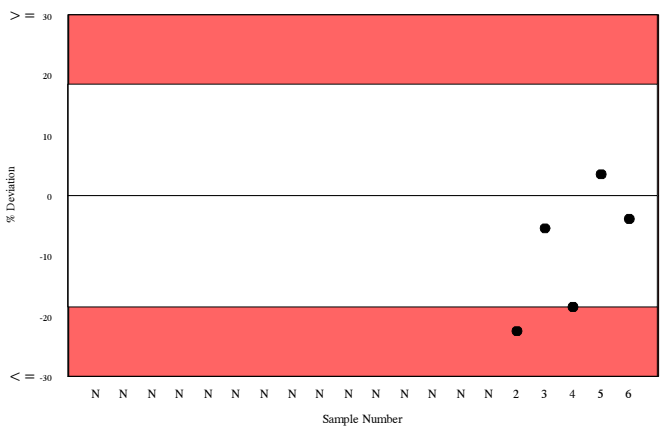
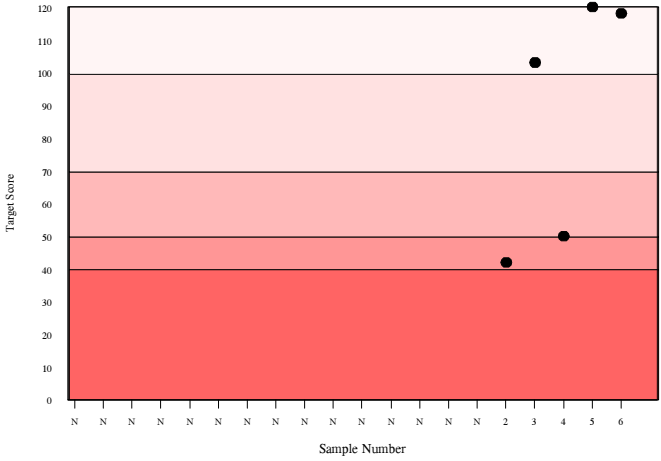
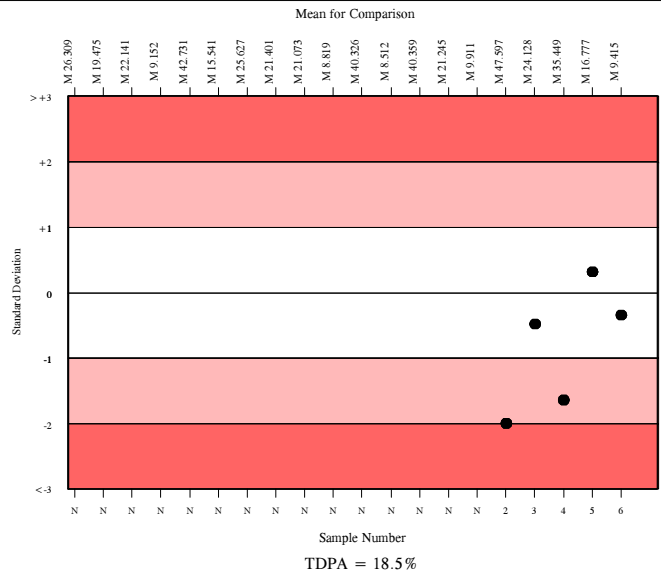
	N	Mean	CV%	U _m	SDPA	Exc.
All Methods	186	8.065	21.9	0.16	0.91	8
Siemens/DPC Immulite 2000/2500	71	9.415	9.3	0.13	1.06	6

▲ Your Result	9.050	SDI	-0.34
		RMSDI	Too Few
■ Mean for Comparison	9.415	TS	118
		RMTS	Too Few
		%DEV	-3.9
		RM%DEV	Too Few

Acceptable limits derived from Biological Variation	N/A
Acceptable limits of performance for RIQAS	18.50%



Method	N	Mean	CV%	U _m
Siemens/DPC Immulite 2000/2500	71	9.415	9.3	0.13
Roche hCG + Beta	30	6.684	9.7	0.15
Beckman DXI Total BhCG (5th IS)	16	6.674	5.1	0.11
Siemens/DPC Immulite 1000	14	10.251	13.2	0.45
Abbott Architect I2000/8200	9	5.852	3.7	0.09
Beckman DxI 600 / 800	9	6.502	5.1	0.14
Beckman Access	6	6.981	3.1	0.11
Siemens Centaur XP/XPT/Classic	7	5.297	9.7	0.24
Perkin Elmer DELFIA Xpress/AutoDELFIA	6	9.211	5.9	0.28
Beckman Access Total BhCG (5th IS)	5	6.629	5.6	0.21
bioMerieux, Vidas/Mini Vidas	2	11.637	2.4	0.25
Roche hCG STAT(Intact)	2	9.634	6.3	0.54



Inhibin A, pg/ml

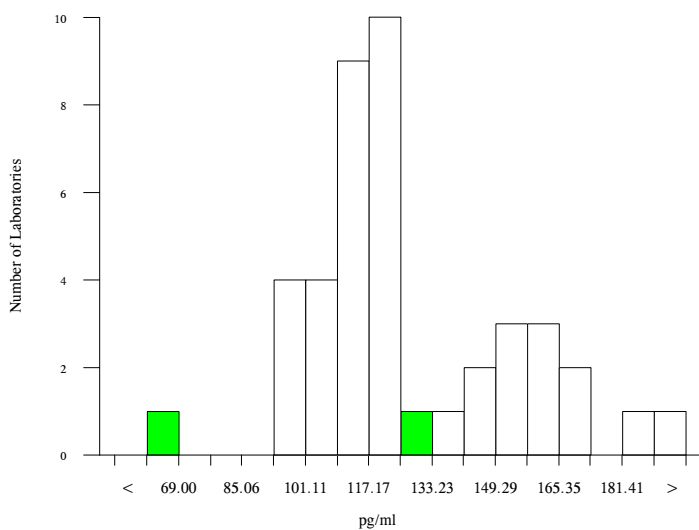
	N	Mean	CV%	U _m	SDPA	Exc.
All Methods	39	125.208	17.1	4.29	12.62a	3
Stat Fax Elisa Readers	1	127.300	0.0	0.00	N/A	1

- All Methods
- Stat Fax Elisa Readers

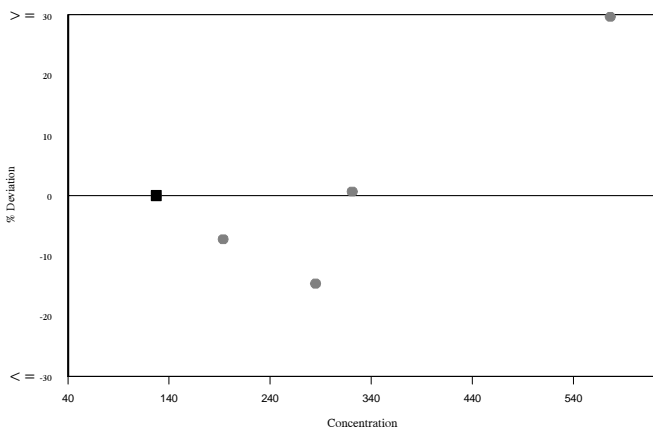
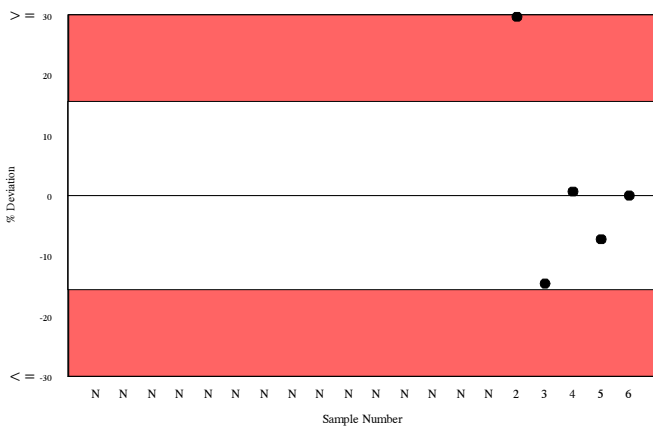
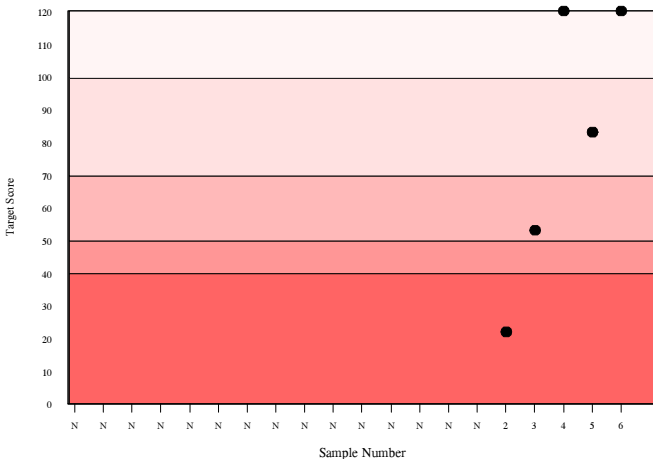
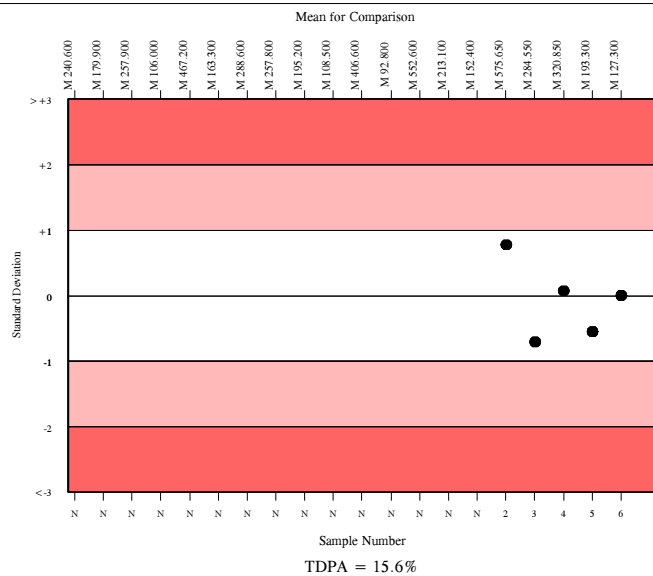
▲ Your Result	127.300	SDI	0.00
		RMSDI	Too Few
■ Mean for Comparison	127.300	TS	120
		RMTS	Too Few
		%DEV	0.0
		RM%DEV	Too Few

The mean for comparison is not statistically significant

Acceptable limits derived from Biological Variation	N/A
Acceptable limits of performance for RIQAS	15.60%



Method	N	Mean	CV%	U _m
Beckman DxI 600 / 800	13	114.735	4.7	1.85
Active Inhibin A Elisa	12	145.987	12.6	6.66
Beckman Access	10	108.780	8.3	3.59
Perkin Elmer DELFIA Xpress/AutoDELFIA	2	173.855	7.3	11.18
Stat Fax Elisa Readers	1	127.300	0.0	0.00

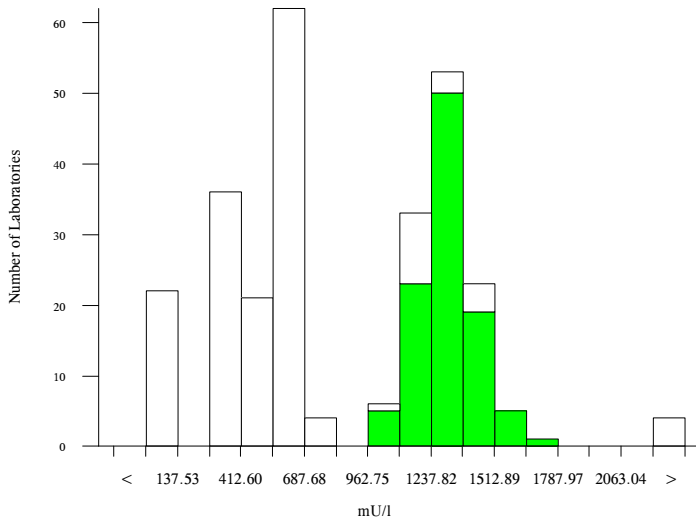


PAPP-A, mU/l

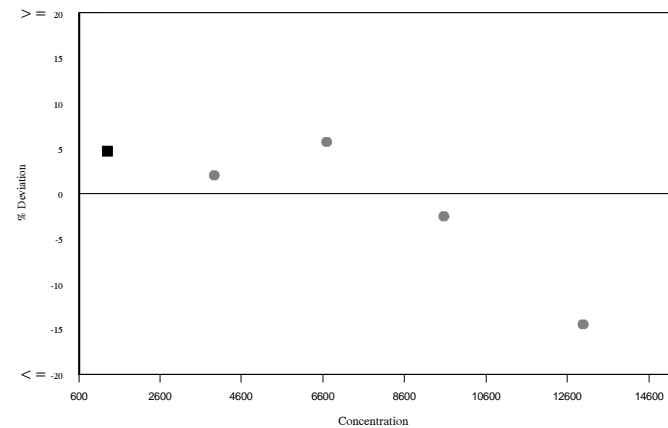
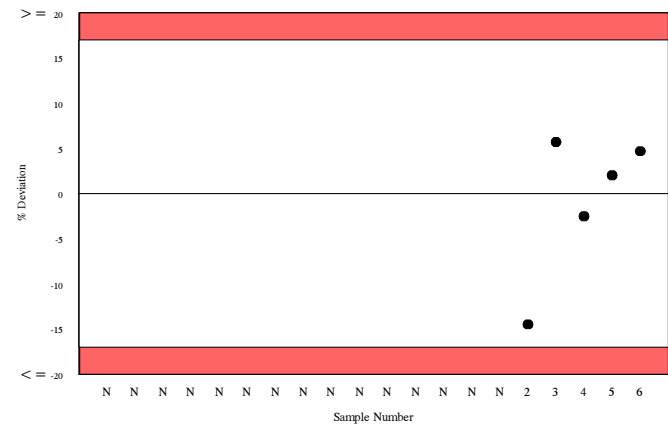
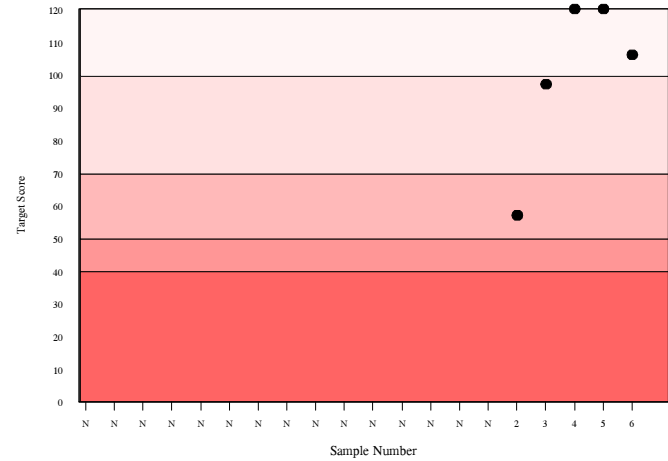
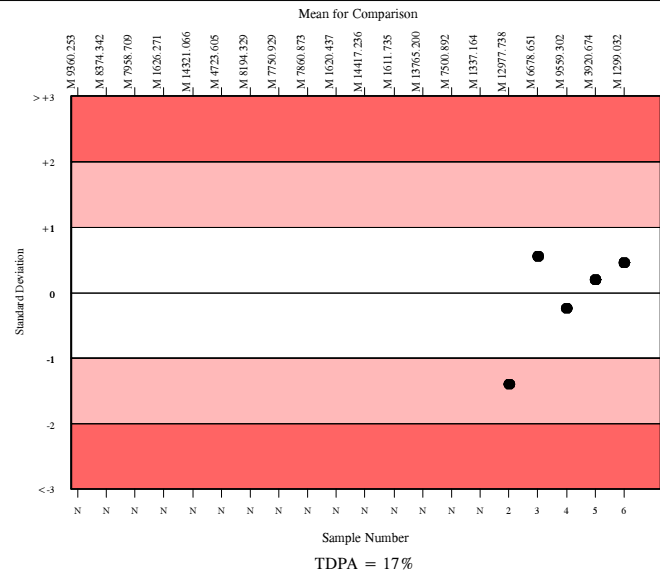
	N	Mean	CV%	U _m	SDPA	Exc.
All Methods	266	835.579	54.5	34.80	93.00a	4
Siemens/DPC Immulite 2000/2500	93	1299.032	6.6	11.10	134.20	10

▲ Your Result	1360.000	SDI	0.45
		RMSDI	Too Few
■ Mean for Comparison	1299.032	TS	106
		RMTS	Too Few
		%DEV	4.7
		RM%DEV	Too Few

Acceptable limits derived from Biological Variation	15.1%
Acceptable limits of performance for RIQAS	17.00%



Method	N	Mean	CV%	U _m
Siemens/DPC Immulite 2000/2500	93	1299.032	6.6	11.10
Perkin Elmer DELFIA Xpress/AutoDELFIA	34	391.315	5.9	4.90
Roche Cobas 6000/8000	34	605.426	6.1	7.90
Roche Cobas 4000/e411	33	610.178	6.7	8.90
Beckman DxI 600 / 800	16	39.979	4.3	0.50
Brahms, Krytor	12	413.266	4.1	6.00
Siemens/DPC Immulite 1000	15	1220.666	7.4	29.30
Beckman Access	4	37.802	8.7	2.00

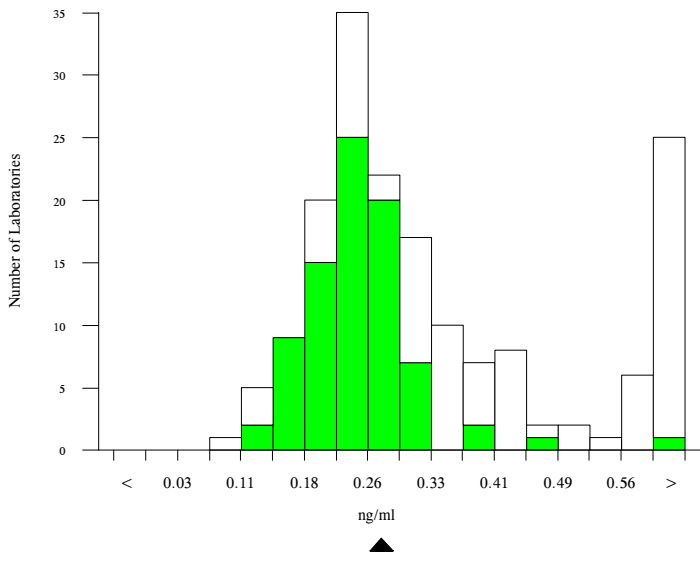


Unconjugated estriol, ng/ml

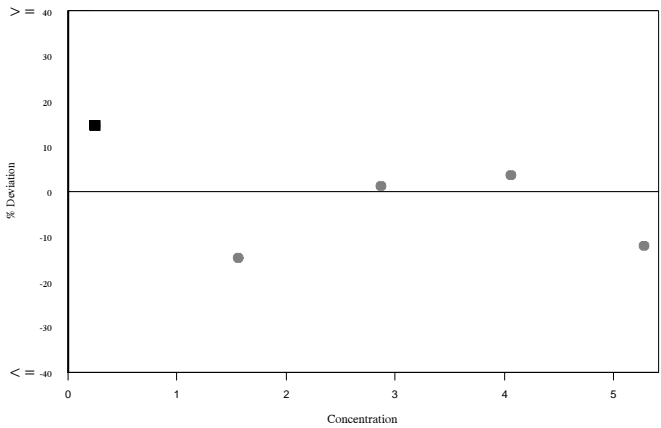
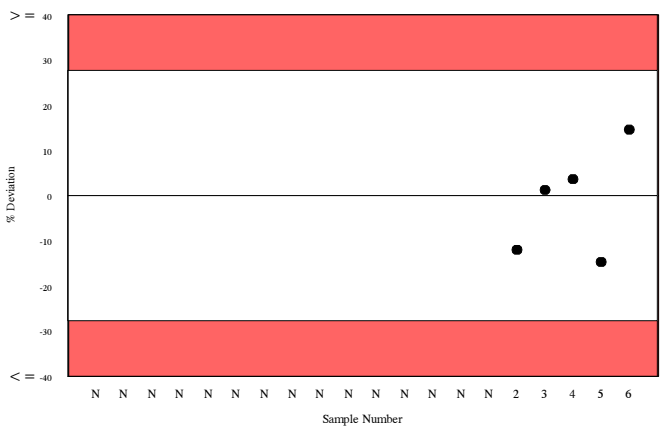
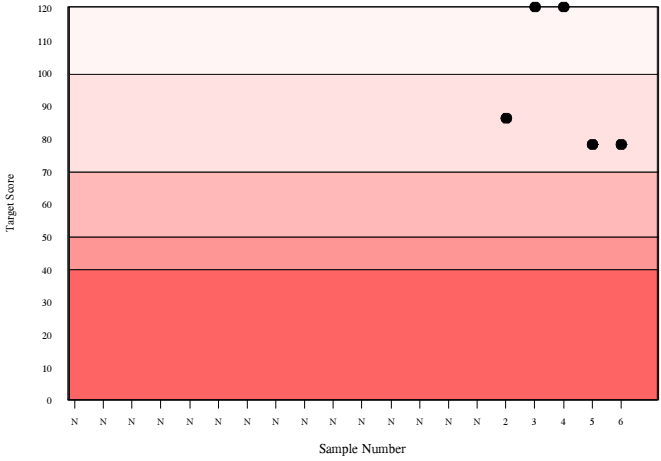
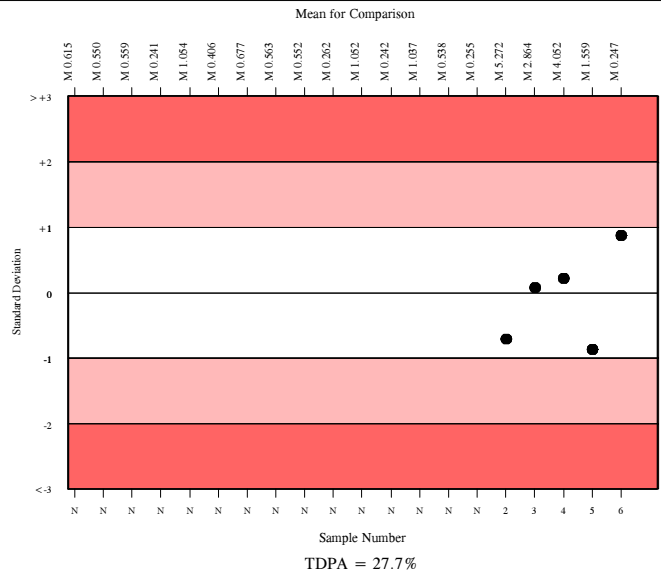
	N	Mean	CV%	U _m	SDPA	Exc.
All Methods	145	0.294	35.2	0.01	0.05	25
DPC, Immulite 2000/2500	76	0.247	17.1	0.01	0.04	6

▲ Your Result	0.283	SDI	0.87
		RMSDI	Too Few
■ Mean for Comparison	0.247	TS	78
		RMTS	Too Few
		%DEV	14.6
		RM%DEV	Too Few

Acceptable limits derived from Biological Variation	N/A
Acceptable limits of performance for RIQAS	27.70%



Method	N	Mean	CV%	U _m
DPC, Immulite 2000/2500	76	0.247	17.1	0.01
Beckman Dxl 600 / 800	26	0.367	13.2	0.01
Perkin Elmer DELFIA Xpress/AutoDELFIA	20	0.621	9.5	0.02
DPC, Immulite 1000	13	0.230	9.7	0.01
Beckman Access	8	0.369	18.3	0.03
Brahms, Kryptor	4	0.127	14.2	0.01
Demeditec ELISA	2	0.950	0.0	0.00
DRG Elisa	2	1.620	33.2	0.47
IBL ELISA	2	0.965	19.8	0.17



Analyte	Mean for Comparison	Your Result	SDI	RMSDI	%DEV	RM%DEV	TS	RMTS	Performance
AFP	14.535	13.200	-1.26	Too Few	-9.2	Too Few	62	Too Few	
hCG, free beta	15.551	15.100	-0.27	Too Few	-2.9	Too Few	120	Too Few	
hCG, total	9.415	9.050	-0.34	Too Few	-3.9	Too Few	118	Too Few	
Inhibin A	127.300	127.300	0.00	Too Few	0.0	Too Few	120	Too Few	
PAPP-A	1299.032	1360.000	0.45	Too Few	4.7	Too Few	106	Too Few	
Unconjugated estriol	0.247	0.283	0.87	Too Few	14.6	Too Few	78	Too Few	

ORMSDI N/A

ORM%DEV N/A

ORMTS N/A

END OF REPORT

