

Dena Laboratory

MATERNAL SCREENING

CYCLE 9 SAMPLE 5

Explanation of codes used in this report

R - Results removed due to reconstitution error
N - No result returned
C - Result corrected

Authorised by: Stephen Doherty, RIQAS Manager

Issue No: 1

Issue Date: 16/05/2017

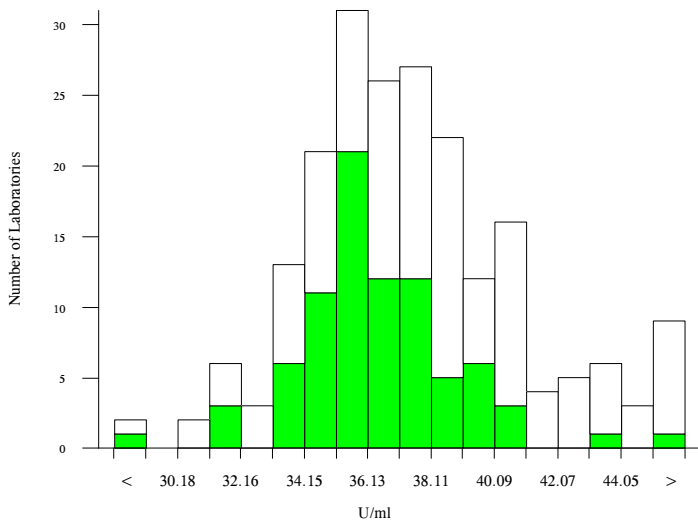
Randox Laboratories Limited
55 Diamond Road
CRUMLIN BT29 4QY
Tel: +44 (0)28 9445 4399
Fax: +44 (0)28 9445 4398
Email: mail@riqas.com

AFP, U/ml

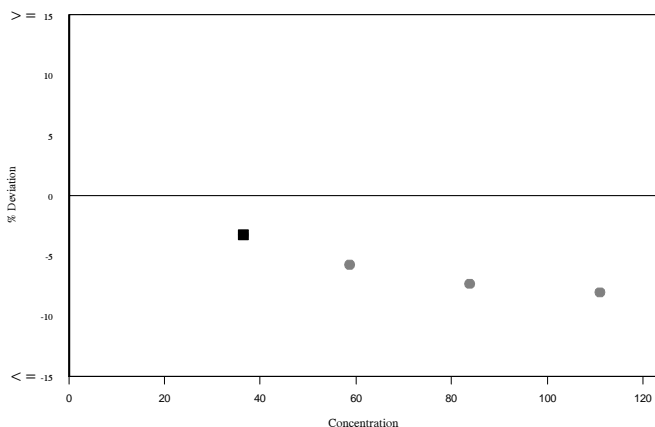
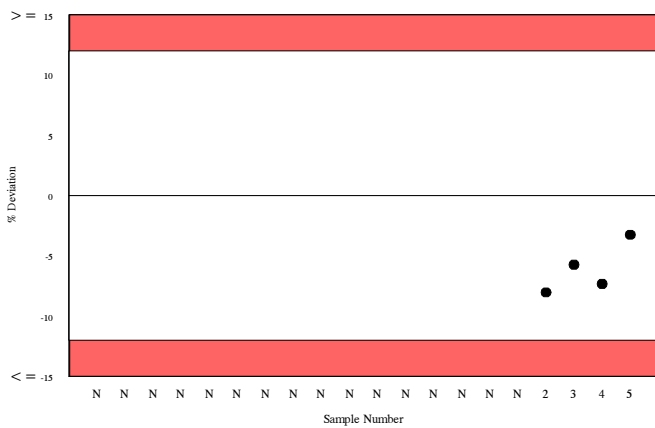
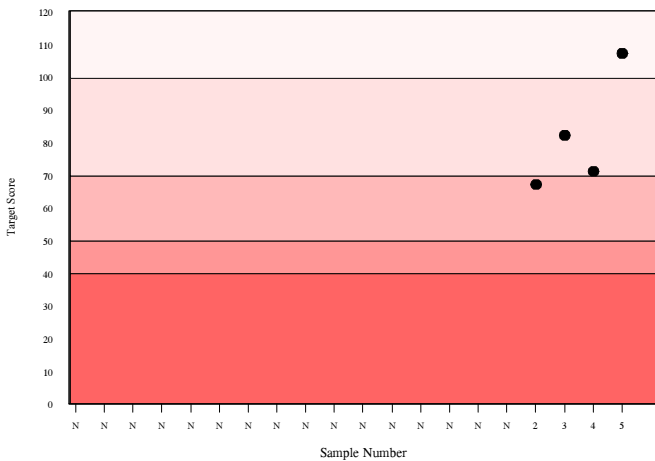
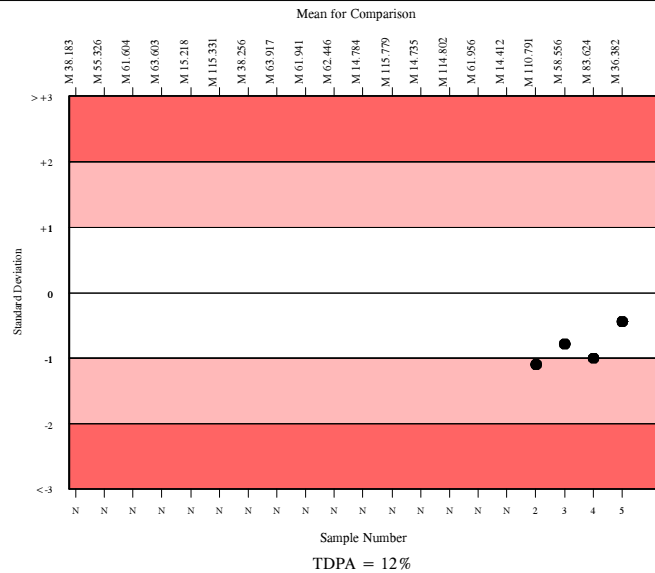
	N	Mean	CV%	U _m	SDPA	Exc.
□ All Methods	190	37.123	7.1	0.24	2.71	19
■ Siemens/DPC Immulite 2000/2500	73	36.382	4.6	0.24	2.65	9

▲ Your Result	35.200	SDI	-0.45
		RMSDI	Too Few
■ Mean for Comparison	36.382	TS	107
		RMTS	Too Few
		%DEV	-3.2
		RM%DEV	Too Few

Acceptable limits derived from Biological Variation	21.9%
Acceptable limits of performance for RIQAS	12.00%



Method	N	Mean	CV%	U _m
Siemens/DPC Immulite 2000/2500	73	36.382	4.6	0.24
Perkin Elmer DELFIA Xpress/AutoDELFIA	27	38.422	4.6	0.42
Beckman DxI 600 / 800	21	34.364	6.2	0.59
Roche Cobas 6000/8000	14	40.659	7.5	1.01
Siemens/DPC Immulite 1000	12	37.518	4.9	0.66
Roche Cobas 4000/e411	10	40.132	7.7	1.22
Abbott Architect	10	37.009	2.9	0.42
Beckman Access/LXi725	9	42.482	16.8	2.98
Siemens Centaur XP/XPT/Classic	6	43.105	6.2	1.37
Brahms Kryptor	4	33.183	3.4	0.70
Roche Elecsys	2	41.240	17.4	6.32

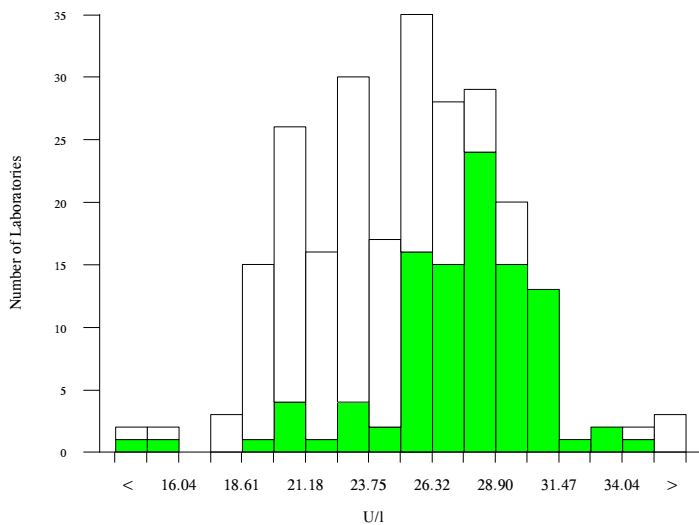


hCG, free beta, U/I

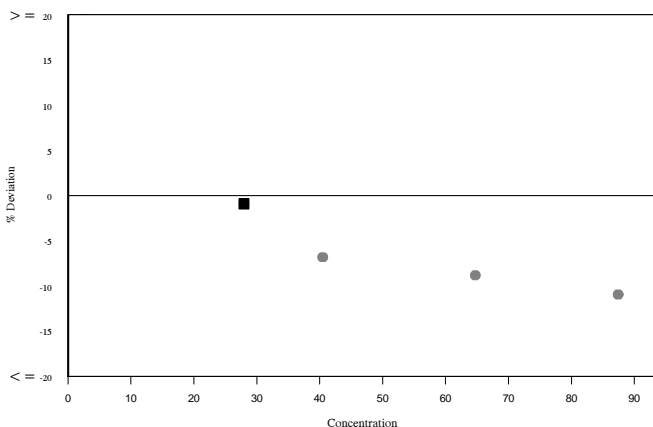
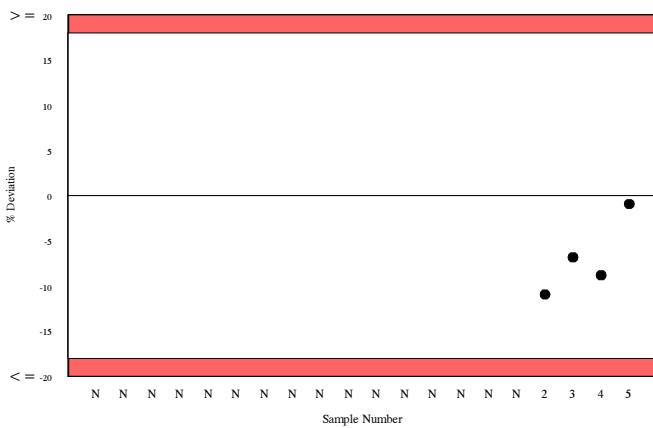
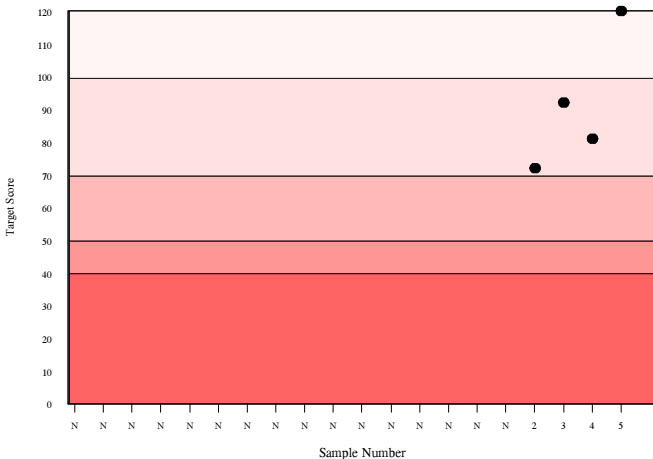
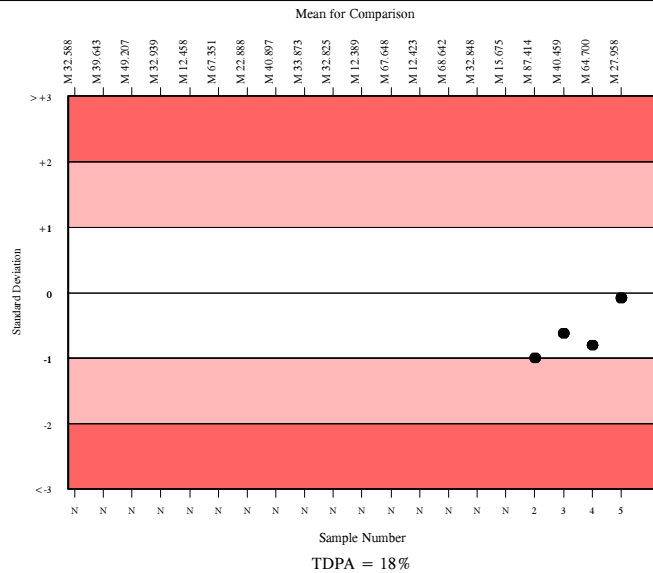
	N	Mean	CV%	U _m	SDPA	Exc.
All Methods	233	25.044	13.7	0.28	2.74	11
Siemens/DPC Immulite 2000/2500	91	27.958	7.6	0.28	3.06	10

▲ Your Result	27.700	SDI RMSDI	-0.08 Too Few
■ Mean for Comparison	27.958	TS RMTS	120 Too Few
		%DEV RM%DEV	-0.9 Too Few

Acceptable limits derived from Biological Variation	N/A
Acceptable limits of performance for RIQAS	18.00%



Method	N	Mean	CV%	U _m
Siemens/DPC Immulite 2000/2500	91	27.958	7.6	0.28
Perkin Elmer DELFIA Xpress/AutoDELFIA	39	24.364	7.4	0.36
Roche Cobas 4000/e411	30	21.324	7.0	0.34
Roche Cobas 6000/8000	28	20.440	4.0	0.19
Brahms, Krytor	11	26.190	2.8	0.28
Siemens/DPC Immulite 1000	15	26.809	7.3	0.63

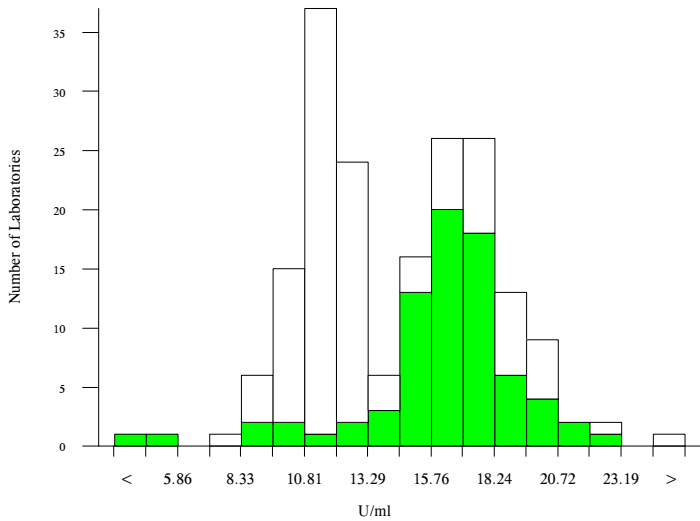


hCG, total, U/ml

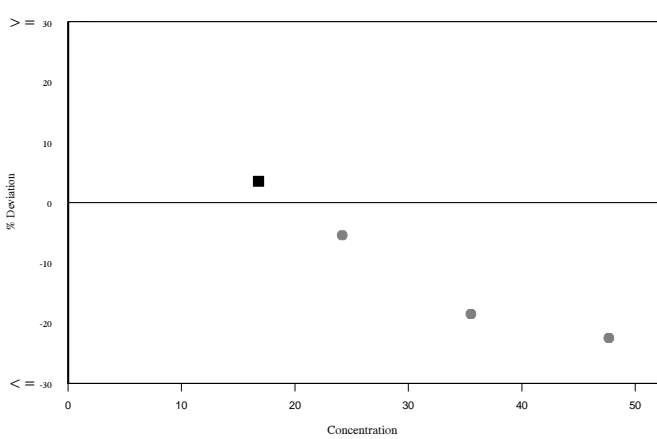
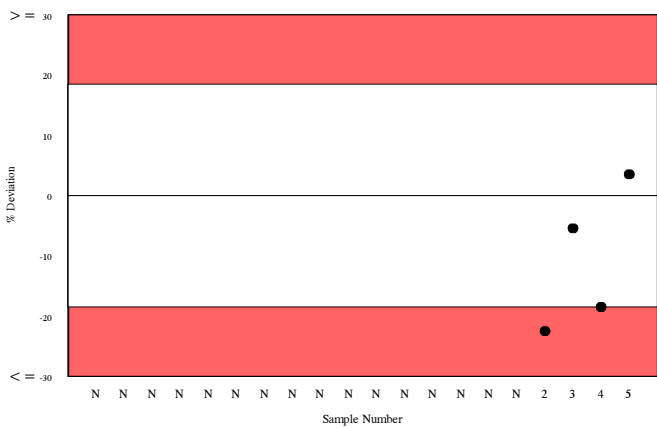
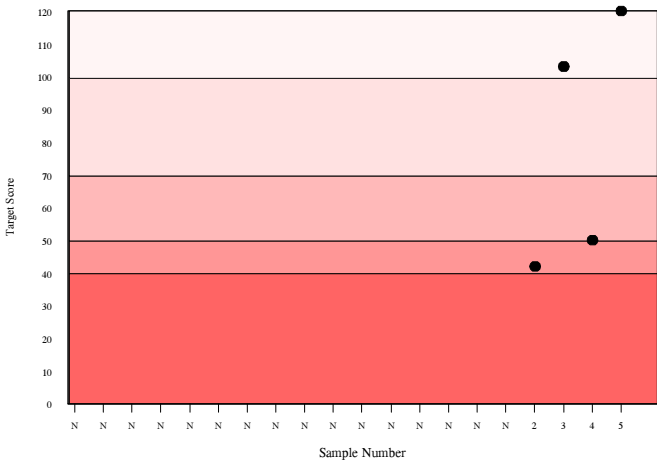
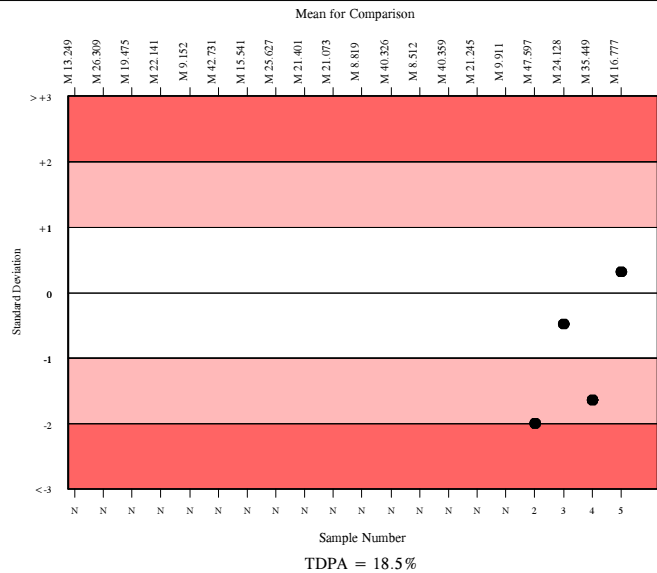
	N	Mean	CV%	U _m	SDPA	Exc.
All Methods	180	14.530	22.7	0.31	1.63	7
Siemens/DPC Immulite 2000/2500	66	16.777	10.1	0.26	1.89	10

▲ Your Result	17.370	SDI	0.31
		RMSDI	Too Few
■ Mean for Comparison	16.777	TS	120
		RMTS	Too Few
		%DEV	3.5
		RM%DEV	Too Few

Acceptable limits derived from Biological Variation	N/A
Acceptable limits of performance for RIQAS	18.50%



Method	N	Mean	CV%	U _m
Siemens/DPC Immulite 2000/2500	66	16.777	10.1	0.26
Roche hCG + Beta	27	11.587	6.4	0.18
Beckman DXI Total BhCG (5th IS)	15	11.821	10.1	0.39
Siemens/DPC Immulite 1000	16	18.160	11.1	0.63
Abbott Architect I2000/8200	8	11.133	1.7	0.09
Perkin Elmer DELFIA Xpress/AutoDELFIA	5	16.903	1.7	0.16
Beckman DxI 600 / 800	6	11.427	8.0	0.47
Beckman Access	7	13.497	17.9	1.14
Siemens Centaur XP/XPT/Classic	6	9.319	16.4	0.78
Beckman Access Total BhCG (5th IS)	5	11.871	7.8	0.52
bioMerieux, Vidas/Mini Vidas	2	19.822	6.0	1.05
Roche hCG STAT(intact)	2	18.821	4.0	0.67



RIQAS

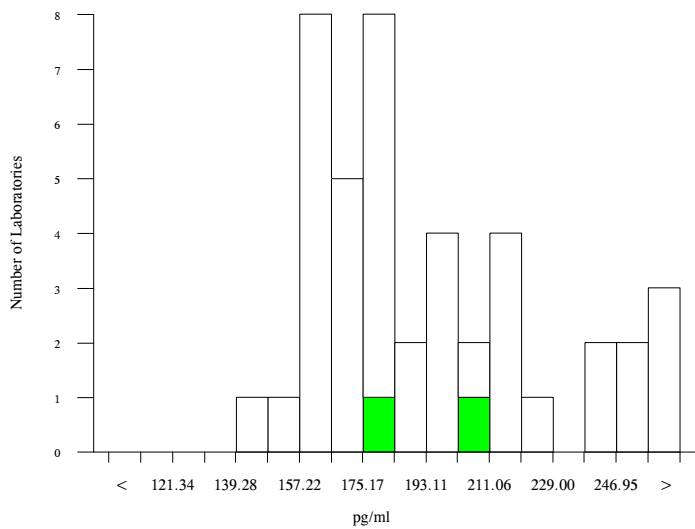
Inhibin A, pg/ml

- All Methods
- Stat Fax Elisa Readers

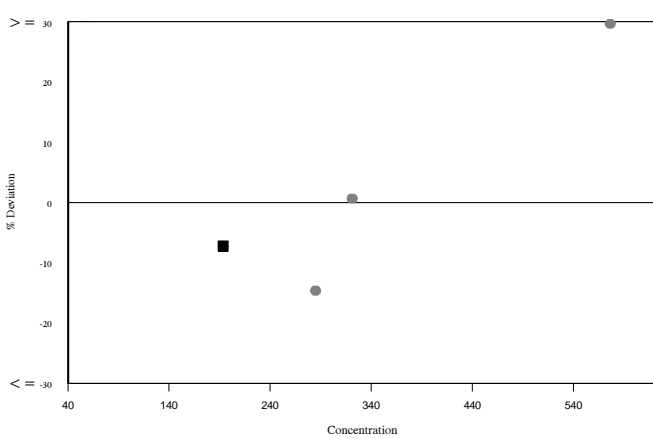
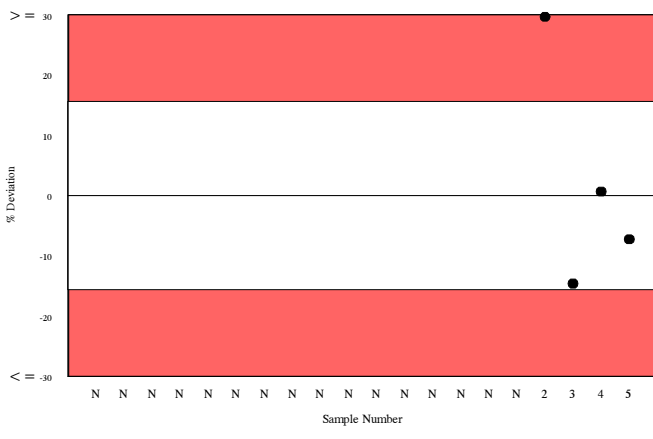
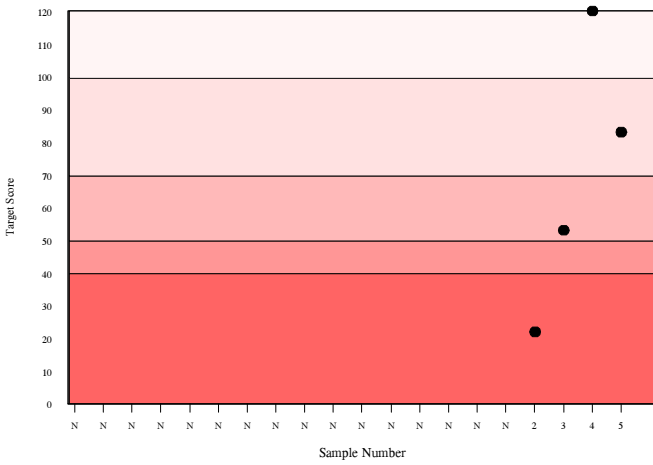
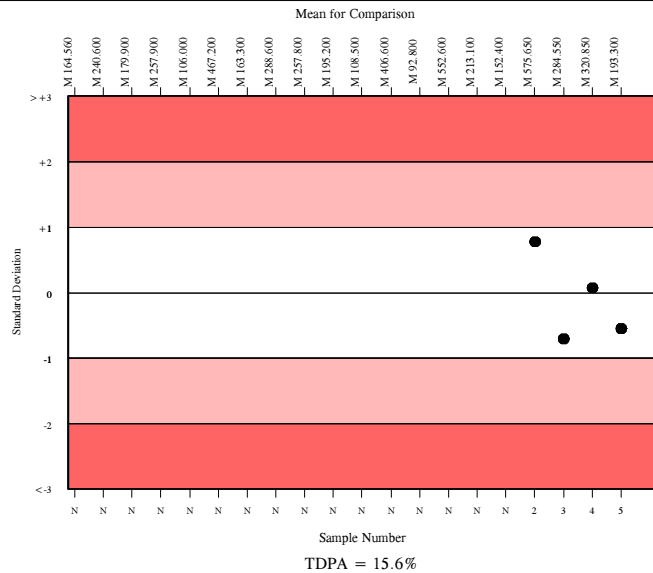
N	Mean	CV%	U _m	SDPA	Exc.
38	184.146	13.0	4.85	17.46	5
2	193.300	10.2	17.50	25.34a	0

▲ Your Result	179.300	SDI RMSDI	-0.55 Too Few
■ Mean for Comparison	193.300	TS RMTS	83 Too Few
		%DEV RM%DEV	-7.2 Too Few
The mean for comparison is not statistically significant			

Acceptable limits derived from Biological Variation	N/A
Acceptable limits of performance for RIQAS	15.60%



Method	N	Mean	CV%	U _m
Beckman DxI 600 / 800	13	169.362	5.4	3.19
Active Inhibin A Elisa	13	225.208	20.8	16.22
Beckman Access	10	172.356	7.8	5.31
Perkin Elmer DELFIA Xpress/AutoDELFIA	2	251.215	1.3	2.89
Stat Fax Elisa Readers	2	193.300	10.2	17.50

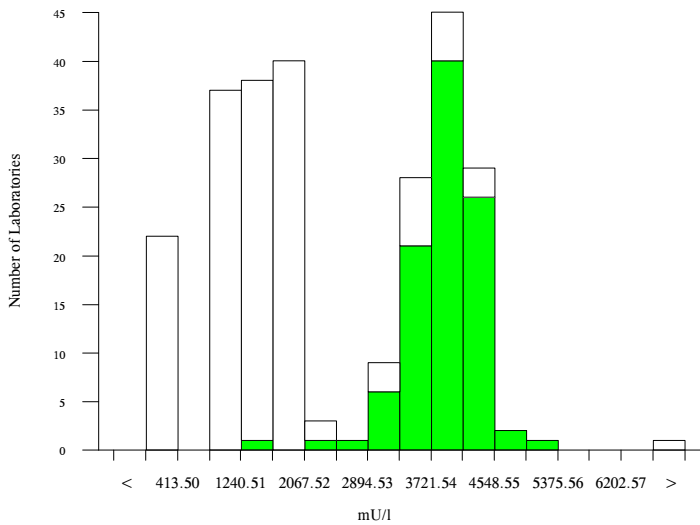


PAPP-A, mU/l

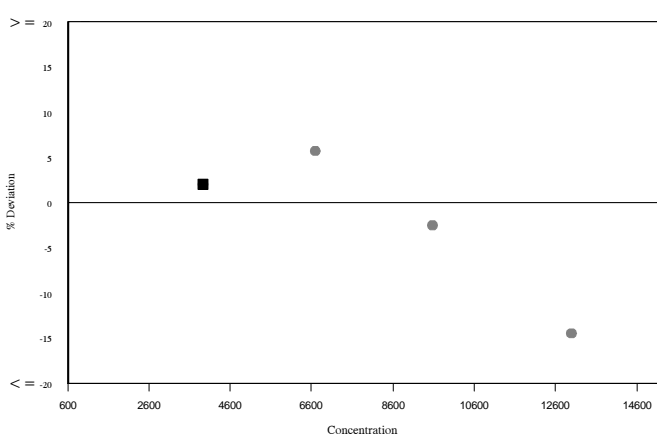
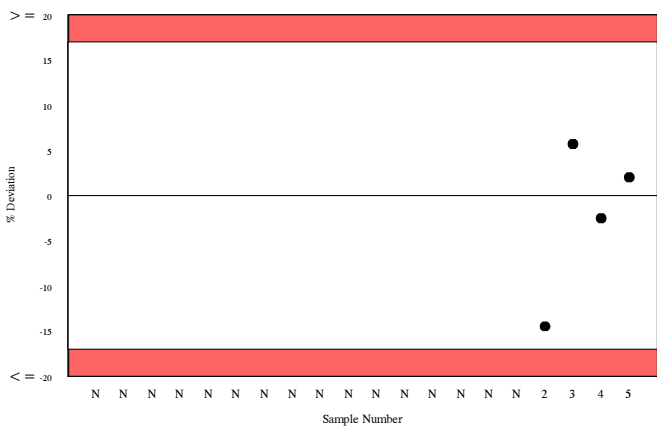
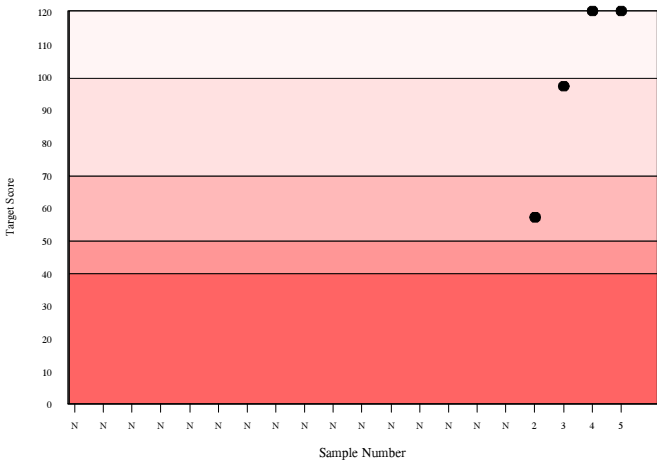
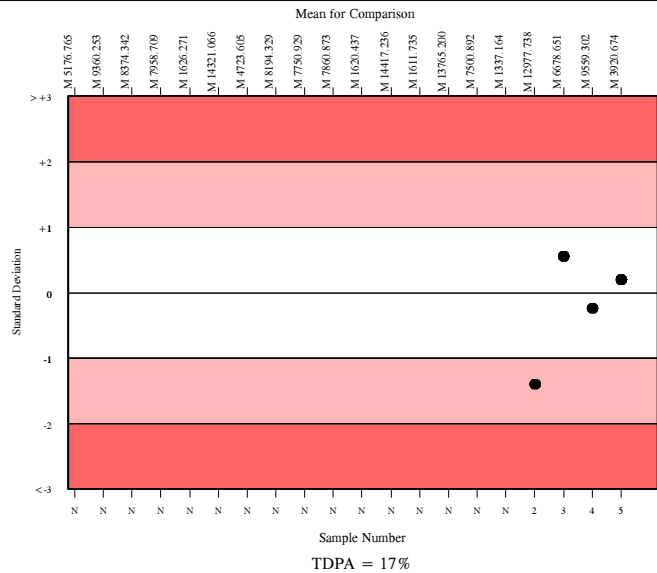
	N	Mean	CV%	U _m	SDPA	Exc.
All Methods	254	2451.476	56.6	108.80	275.60a	2
Siemens/DPC Immulite 2000/2500	89	3920.674	7.7	40.10	405.20	10

▲ Your Result	4000.000	SDI	0.20
		RMSDI	Too Few
■ Mean for Comparison	3920.674	TS	120
		RMTS	Too Few
		%DEV	2.0
		RM%DEV	Too Few

Acceptable limits derived from Biological Variation	15.1%
Acceptable limits of performance for RIQAS	17.00%



Method	N	Mean	CV%	U _m
Siemens/DPC Immulite 2000/2500	89	3920.674	7.7	40.10
Perkin Elmer DELFIA Xpress/AutoDELFIA	33	1161.154	6.0	15.00
Roche Cobas 4000/e411	30	1682.466	5.2	19.90
Roche Cobas 6000/8000	26	1676.192	3.7	15.20
Beckman DxI 600 / 800	15	120.613	4.1	1.60
Siemens/DPC Immulite 1000	15	3736.666	11.1	133.60
Brahms, Krytor	12	1220.666	5.4	23.70
Beckman Access	4	121.426	5.8	4.30

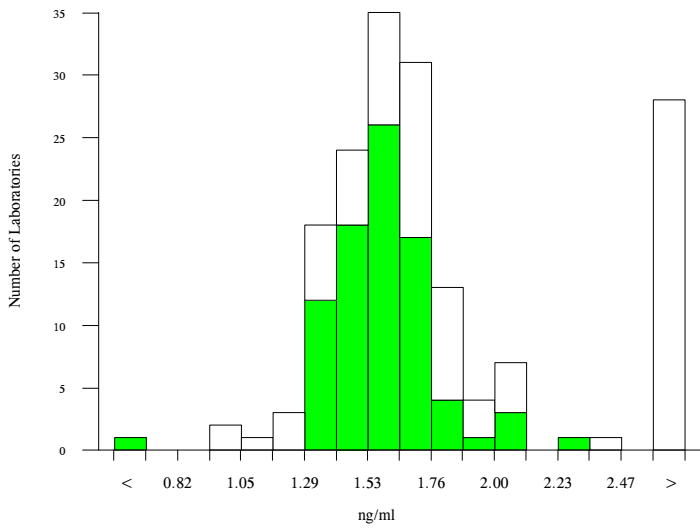


Unconjugated estriol, ng/ml

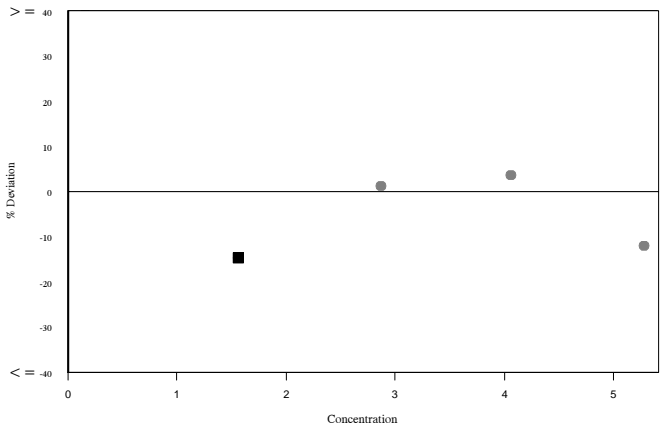
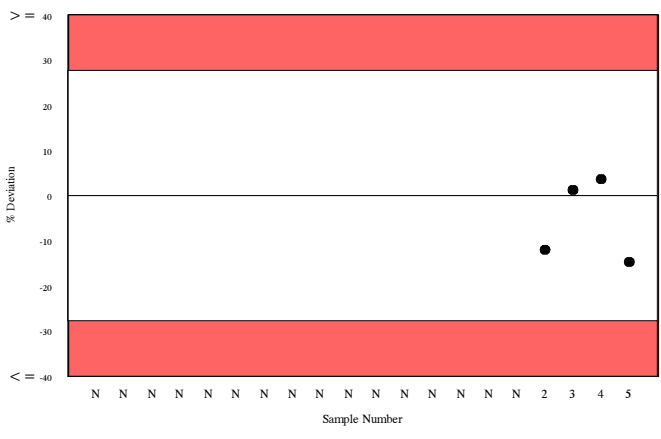
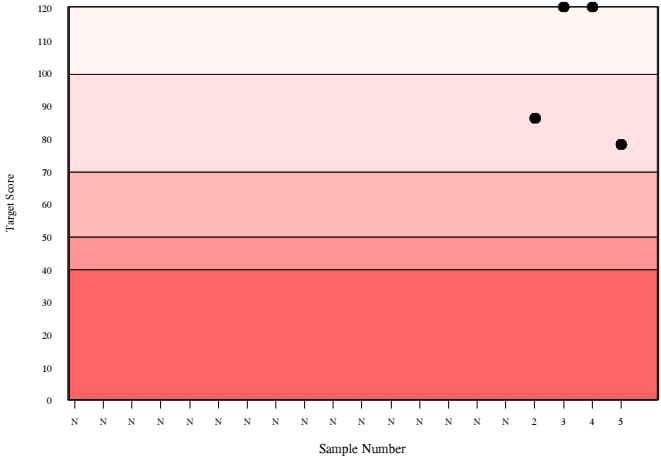
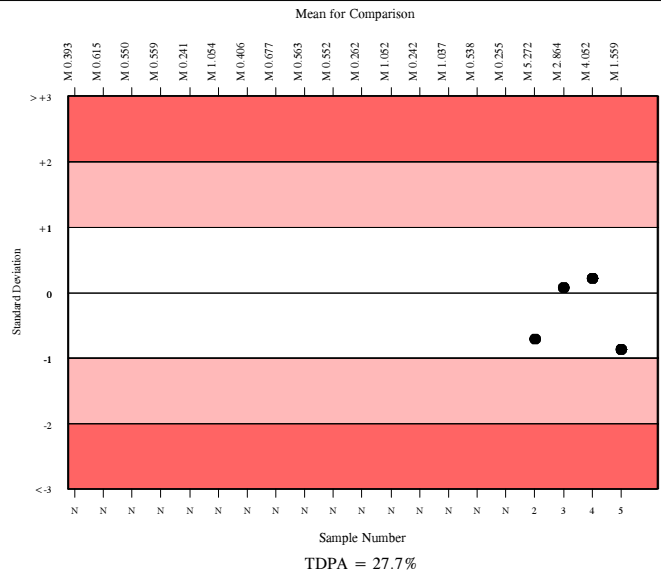
	N	Mean	CV%	U _m	SDPA	Exc.
All Methods	144	1.649	19.1	0.03	0.28	25
DPC, Immulite 2000/2500	75	1.559	8.0	0.02	0.26	8

▲ Your Result	1.330	SDI	-0.87
		RMSDI	Too Few
■ Mean for Comparison	1.559	TS	78
		RMTS	Too Few
		%DEV	-14.7
		RM%DEV	Too Few

Acceptable limits derived from Biological Variation	N/A
Acceptable limits of performance for RIQAS	27.70%



Method	N	Mean	CV%	U _m
DPC, Immulite 2000/2500	75	1.559	8.0	0.02
Beckman Dxl 600 / 800	24	1.729	5.3	0.02
Perkin Elmer DELFIA Xpress/AutoDELFIA	21	3.706	7.4	0.07
DPC, Immulite 1000	11	1.456	6.0	0.03
Beckman Access	9	1.765	13.6	0.10
Brahms, Kryptor	4	1.077	7.3	0.05
IBL ELISA	3	3.133	15.7	0.36
Demeditec ELISA	2	1.300	0.0	0.00
DRG Elisa	2	3.435	1.4	0.04



Analyte	Mean for Comparison	Your Result	SDI	RMSDI	%DEV	RM%DEV	TS	RMTS	Performance
AFP	36.382	35.200	-0.45	Too Few	-3.2	Too Few	107	Too Few	
hCG, free beta	27.958	27.700	-0.08	Too Few	-0.9	Too Few	120	Too Few	
hCG, total	16.777	17.370	0.31	Too Few	3.5	Too Few	120	Too Few	
Inhibin A	193.300	179.300	-0.55	Too Few	-7.2	Too Few	83	Too Few	
PAPP-A	3920.674	4000.000	0.20	Too Few	2.0	Too Few	120	Too Few	
Unconjugated estriol	1.559	1.330	-0.87	Too Few	-14.7	Too Few	78	Too Few	

ORMSDI N/A

ORM%DEV N/A

ORMTS N/A

END OF REPORT

