

Dena Laboratory

MATERNAL SCREENING

CYCLE 9 SAMPLE 4

Explanation of codes used in this report

R - Results removed due to reconstitution error
N - No result returned
C - Result corrected

Authorised by: Stephen Doherty, RIQAS Manager

Issue No: 1

Issue Date: 19/04/2017

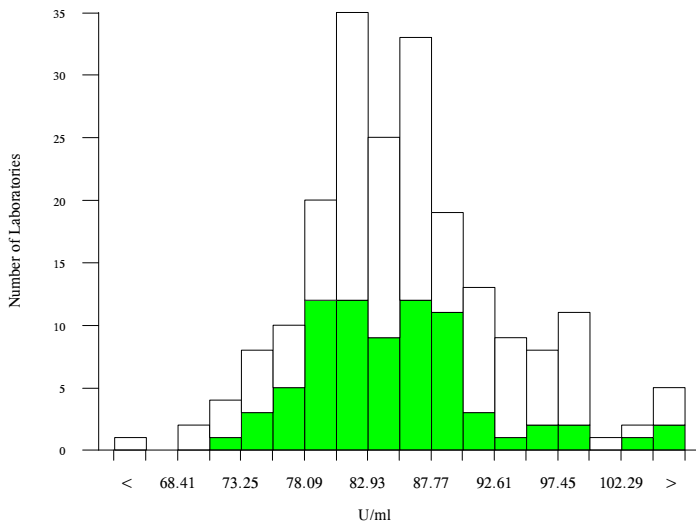
Randox Laboratories Limited
55 Diamond Road
CRUMLIN BT29 4QY
Tel: +44 (0)28 9445 4399
Fax: +44 (0)28 9445 4398
Email: mail@riqas.com

AFP, U/ml

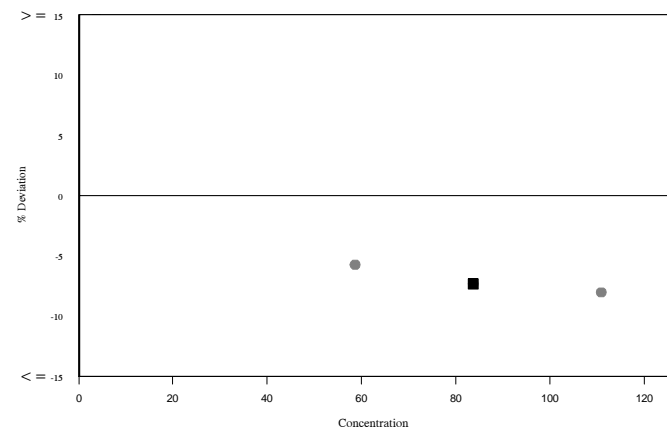
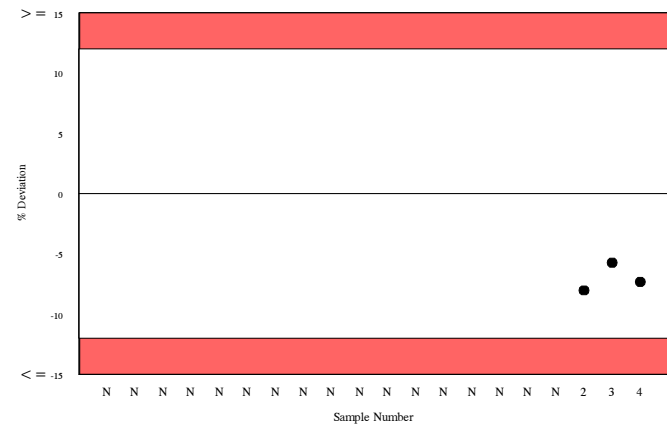
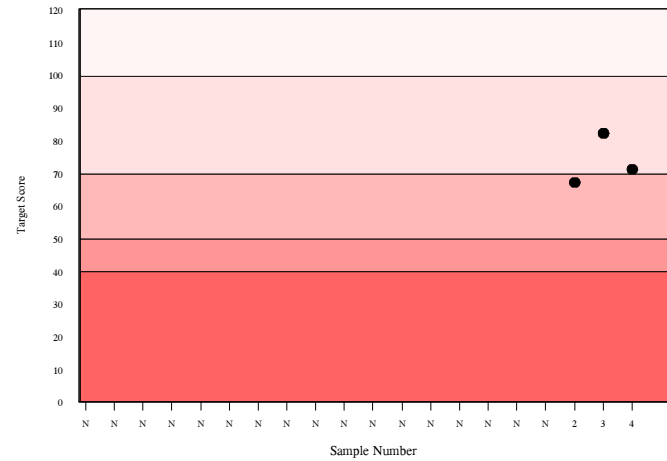
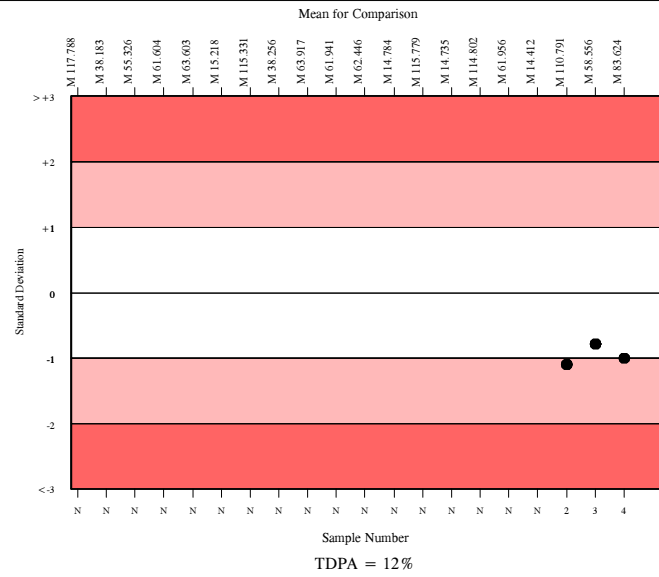
	N	Mean	CV%	U _m	SDPA	Exc.
□ All Methods	195	85.357	7.6	0.58	6.23	11
■ Siemens/DPC Immulite 2000/2500	68	83.624	5.8	0.73	6.10	8

▲ Your Result	77.500	SDI RMSDI	-1.00 Too Few
■ Mean for Comparison	83.624	TS RMTS	71 Too Few
		%DEV RM%DEV	-7.3 Too Few

Acceptable limits derived from Biological Variation	21.9%
Acceptable limits of performance for RIQAS	12.00%



Method	N	Mean	CV%	U _m
Siemens/DPC Immulite 2000/2500	68	83.624	5.8	0.73
Perkin Elmer DELFIA Xpress/AutoDELFIA	22	83.208	2.6	0.57
Beckman DxI 600 / 800	23	81.347	6.9	1.46
Roche Cobas 6000/8000	16	92.974	6.3	1.84
Siemens/DPC Immulite 1000	12	84.554	5.5	1.68
Abbott Architect	9	84.971	1.6	0.55
Beckman Access/LXi725	11	84.840	6.7	2.14
Roche Cobas 4000/e411	8	96.987	2.3	0.99
Siemens Centaur XP/XPT/Classic	7	92.921	5.3	2.33
Brahms Kryptor	4	73.308	6.3	2.88
Roche Elecsys	3	91.517	14.5	9.60

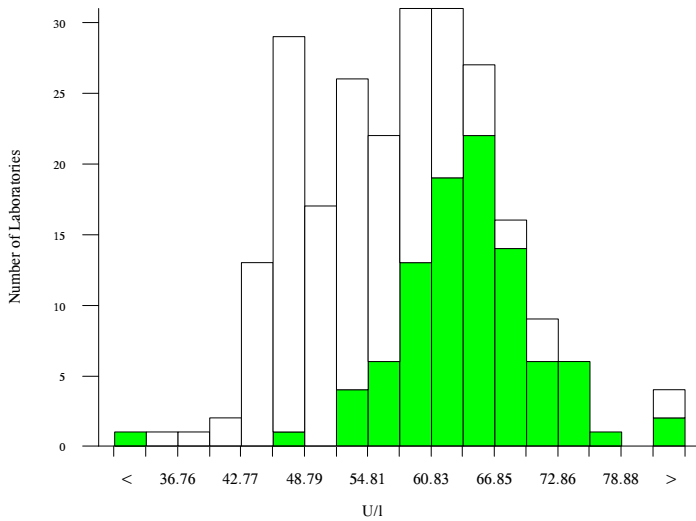


hCG, free beta, U/I

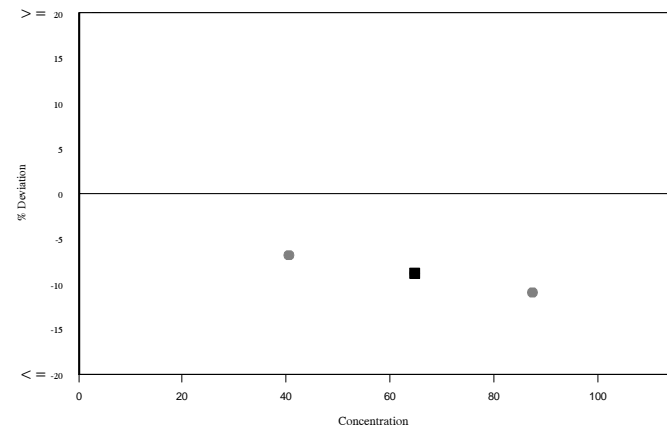
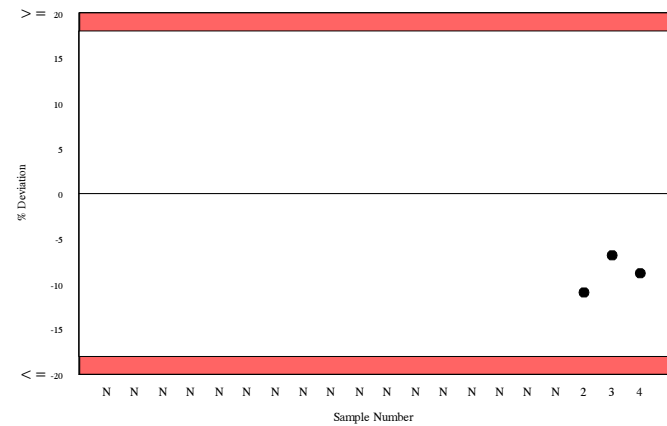
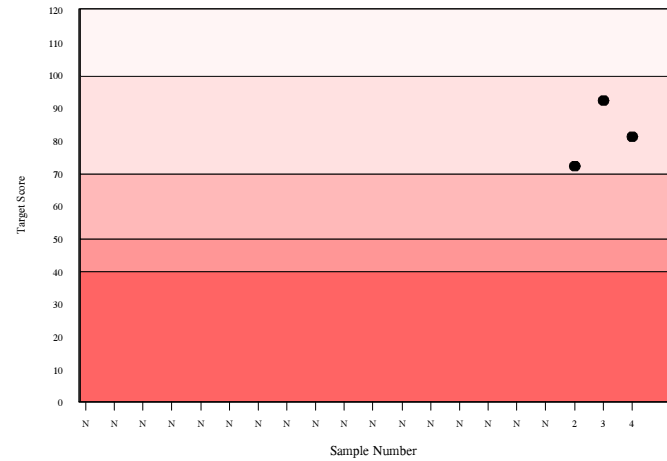
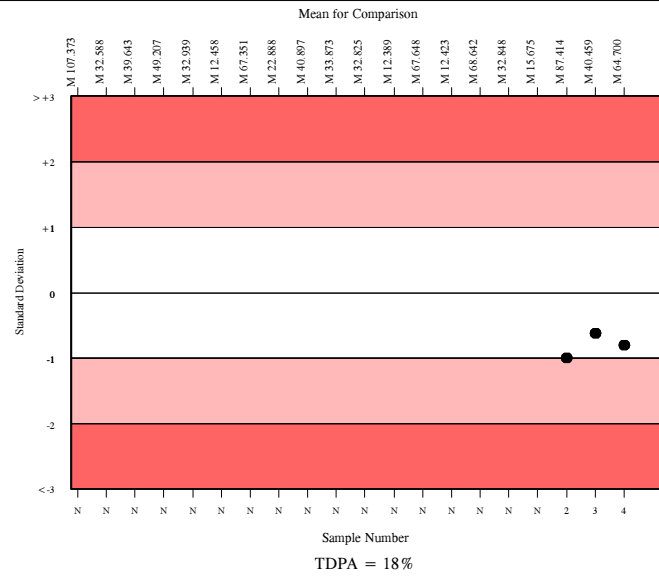
	N	Mean	CV%	U _m	SDPA	Exc.
□ All Methods	227	57.824	13.9	0.67	6.33	10
■ Siemens/DPC Immulite 2000/2500	85	64.700	7.3	0.64	7.08	10

▲ Your Result	59.000	SDI	-0.81
		RMSDI	Too Few
■ Mean for Comparison	64.700	TS	81
		RMTS	Too Few
		%DEV	-8.8
		RM%DEV	Too Few

Acceptable limits derived from Biological Variation	N/A
Acceptable limits of performance for RIQAS	18.00%



Method	N	Mean	CV%	U _m
Siemens/DPC Immulite 2000/2500	85	64.700	7.3	0.64
Perkin Elmer DELFIA Xpress/AutoDELFIA	36	54.831	8.0	0.91
Roche Cobas 6000/8000	31	46.545	3.5	0.36
Roche Cobas 4000/e411	26	50.387	5.0	0.61
Brahms, Krytor	15	58.893	3.9	0.74
Siemens/DPC Immulite 1000	13	60.969	5.6	1.19
Roche Elecsys 2010/1010	2	60.900	3.3	1.80



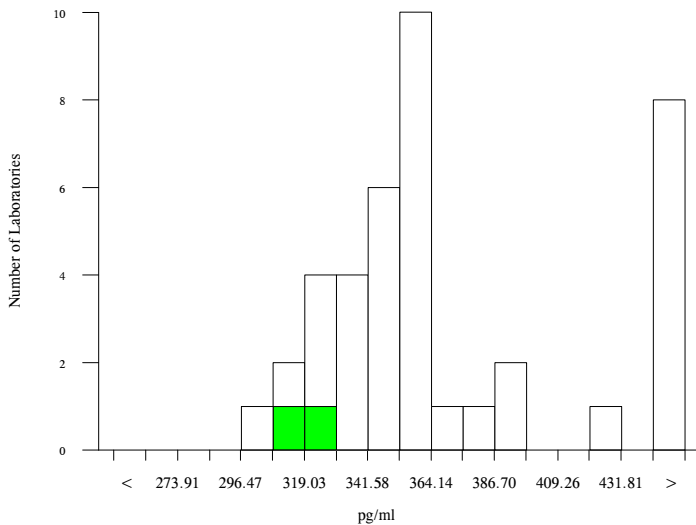
Inhibin A, pg/ml

	N	Mean	CV%	U _m	SDPA	Exc.
All Methods	33	352.867	8.5	6.54	33.47	7
Stat Fax Elisa Readers	2	320.850	0.9	2.69	30.43	0

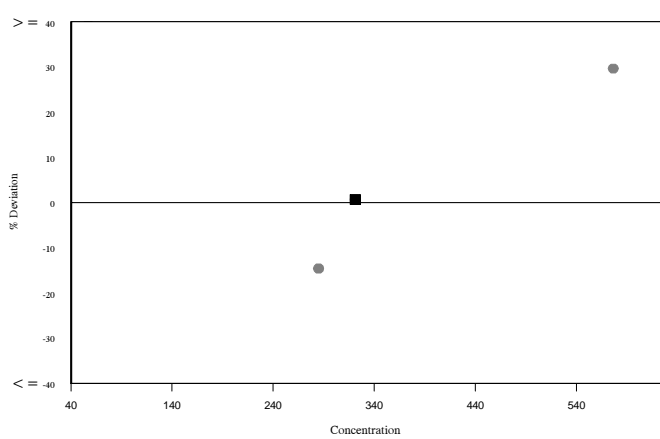
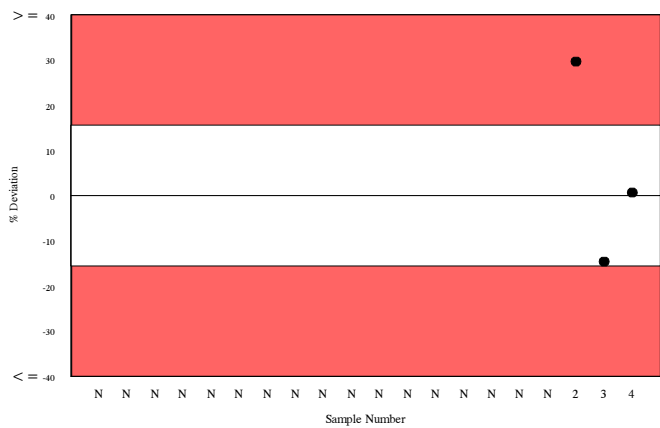
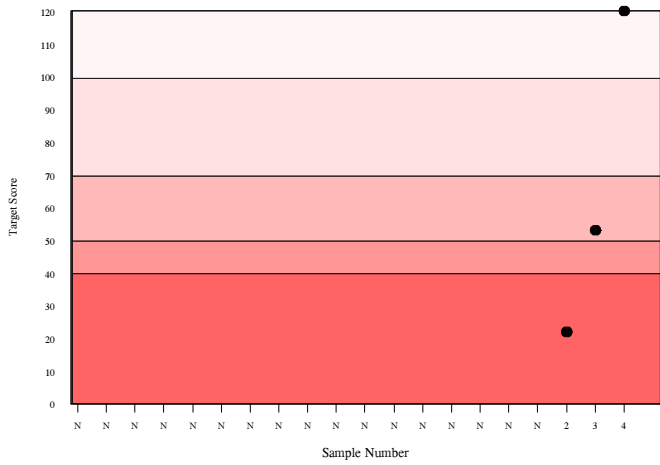
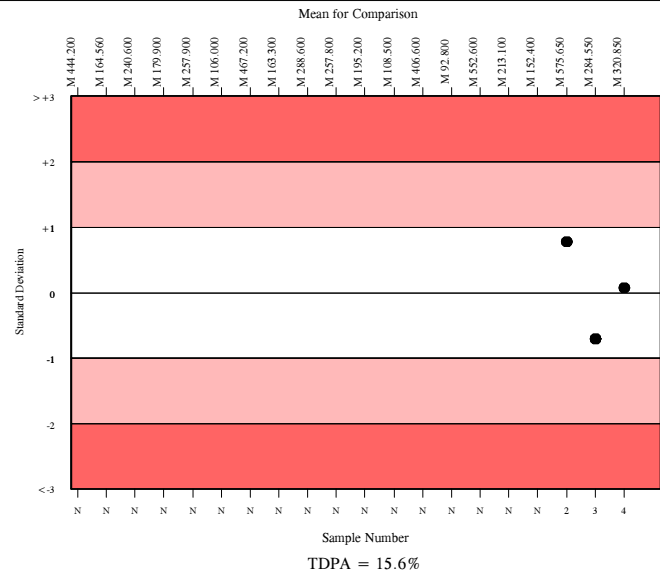
▲ Your Result	323.000	SDI RMSDI	0.07 Too Few
■ Mean for Comparison	320.850	TS RMTS	120 Too Few
		%DEV RM%DEV	0.7 Too Few

The mean for comparison is not statistically significant

Acceptable limits derived from Biological Variation	N/A
Acceptable limits of performance for RIQAS	15.60%



Method	N	Mean	CV%	U _m
Beckman DxI 600 / 800	13	347.374	4.8	5.81
Active Inhibin A Elisa	11	437.730	18.0	29.74
Beckman Access	9	336.439	5.2	7.28
Perkin Elmer DELFIA Xpress/AutoDELFIA	2	568.721	2.2	11.15
Stat Fax Elisa Readers	2	320.850	0.9	2.69



Unconjugated estriol, ng/ml

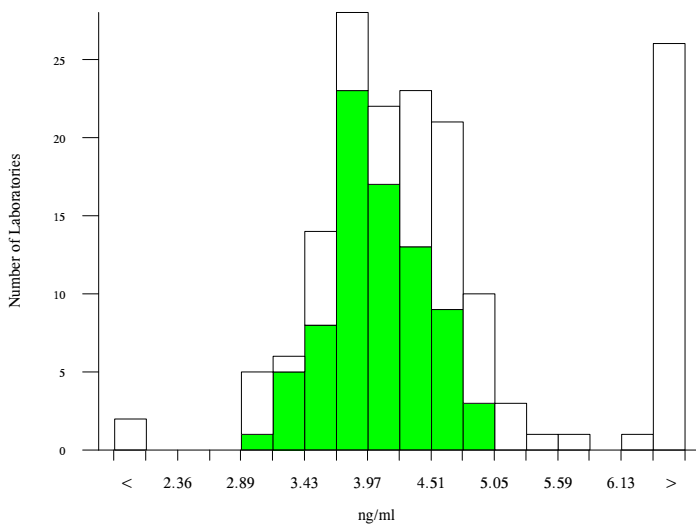
□ All Methods

■ DPC, Immulite 2000/2500

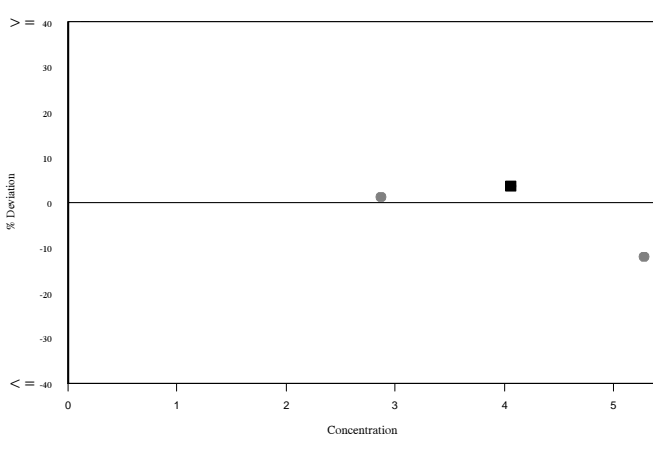
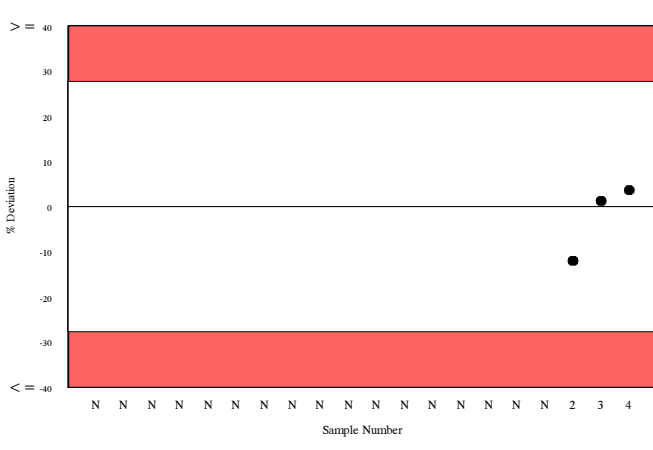
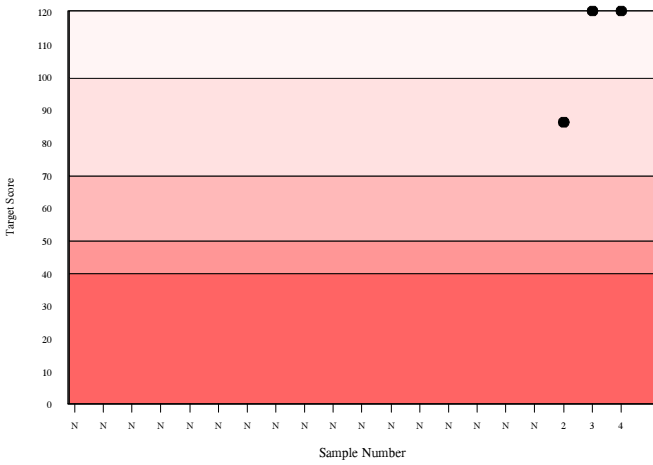
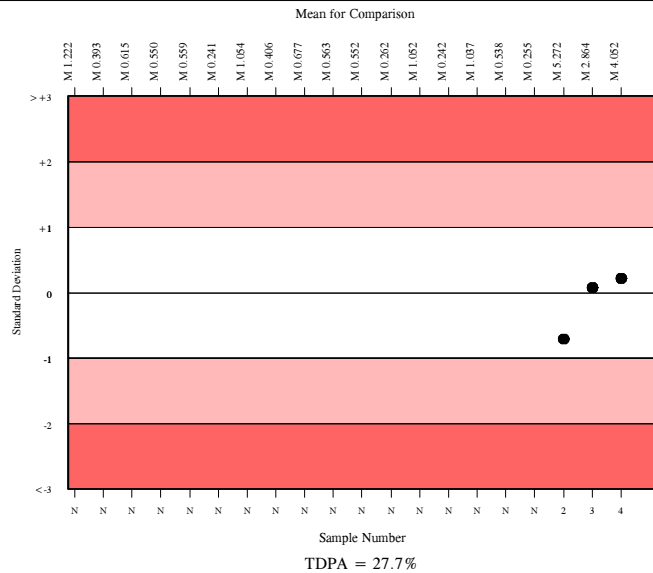
N	Mean	CV%	U _m	SDPA	Exc.
138	4.247	16.9	0.08	0.72	25
75	4.052	9.3	0.05	0.68	4

▲ Your Result	4.200	SDI	0.22
		RMSDI	Too Few
■ Mean for Comparison	4.052	TS	120
		RMTS	Too Few
		%DEV	3.6
		RM%DEV	Too Few

Acceptable limits derived from Biological Variation	N/A
Acceptable limits of performance for RIQAS	27.70%



Method	N	Mean	CV%	U _m
DPC, Immulite 2000/2500	75	4.052	9.3	0.05
Beckman Dxl 600 / 800	21	4.538	4.0	0.05
Perkin Elmer DELFIA Xpress/AutoDELFIA	21	10.395	11.2	0.32
DPC, Immulite 1000	14	3.860	10.3	0.13
Beckman Access	9	4.821	7.2	0.14
Brahms, Kryptor	4	3.243	7.0	0.14
IBL ELISA	4	7.218	14.3	0.64
DRG Elisa	2	6.465	3.0	0.17



Analyte	Mean for Comparison	Your Result	SDI	RMSDI	%DEV	RM%DEV	TS	RMTS	Performance
AFP	83.624	77.500	-1.00	Too Few	-7.3	Too Few	71	Too Few	
hCG, free beta	64.700	59.000	-0.81	Too Few	-8.8	Too Few	81	Too Few	
hCG, total	35.449	28.900	-1.64	Too Few	-18.5	Too Few	50	Too Few	
Inhibin A	320.850	323.000	0.07	Too Few	0.7	Too Few	120	Too Few	
PAPP-A	9559.302	9320.000	-0.24	Too Few	-2.5	Too Few	120	Too Few	
Unconjugated estriol	4.052	4.200	0.22	Too Few	3.6	Too Few	120	Too Few	

ORMSDI N/A

ORM%DEV N/A

ORMTS N/A

END OF REPORT

