

Dena Laboratory

MATERNAL SCREENING

CYCLE 10 SAMPLE 3

Explanation of codes used in this report

R - Results removed due to reconstitution error
N - No result returned
C - Result corrected

Authorised by: Stephen Doherty, RIQAS Manager

Issue No: 1

Issue Date: 20/03/2018

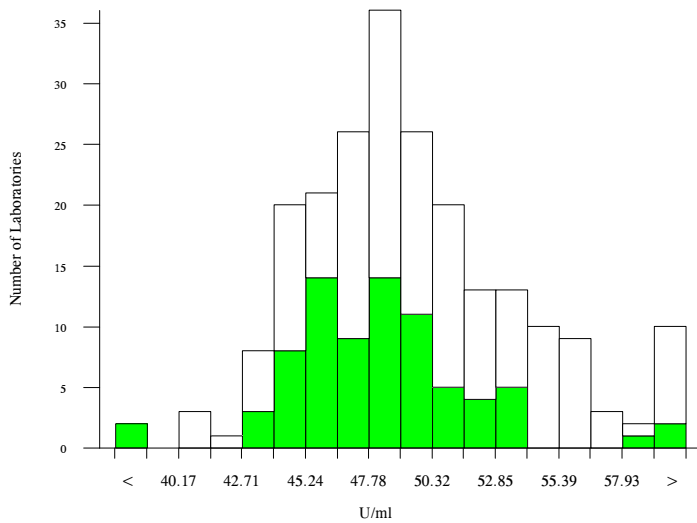
Randox Laboratories Limited
55 Diamond Road
CRUMLIN BT29 4QY
Tel: +44 (0)28 9445 4399
Fax: +44 (0)28 9445 4398
Email: mail@riqas.com

AFP, U/ml

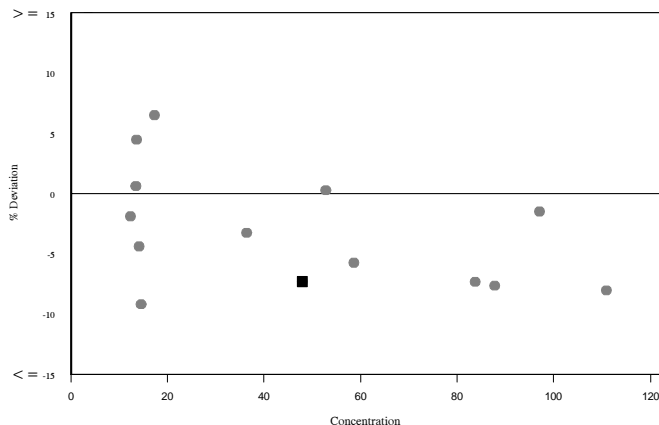
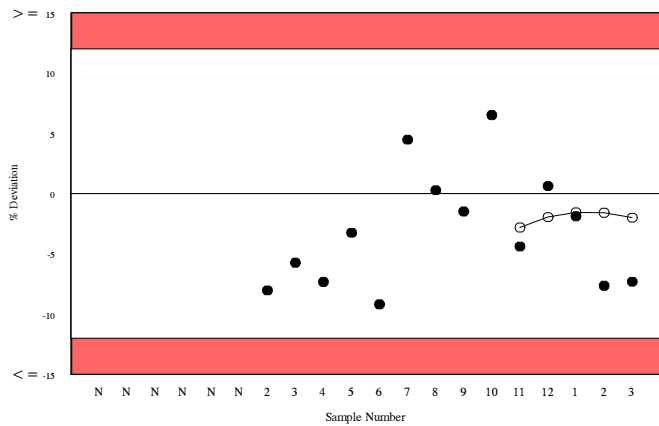
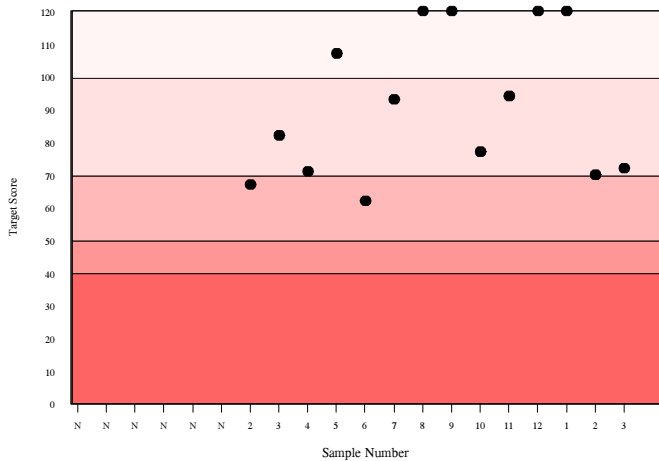
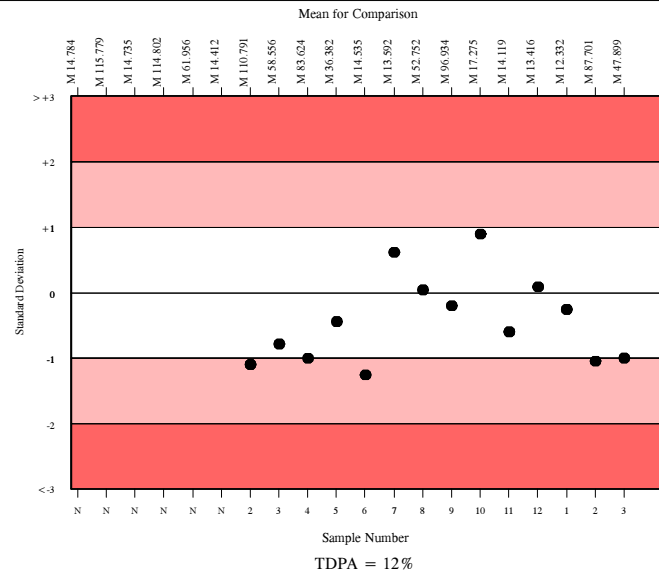
	N	Mean	CV%	U _m	SDPA	Exc.
□ All Methods	204	49.054	6.9	0.30	3.58	19
■ Siemens/DPC Immulite 2000/2500	71	47.899	5.4	0.38	3.49	7

▲ Your Result	44.400	SDI	-1.00
		RMSDI	-0.27
■ Mean for Comparison	47.899	TS	72
		RMTS	94
		%DEV	-7.3
		RM%DEV	-2.0

Acceptable limits derived from Biological Variation	21.9%
Acceptable limits of performance for RIQAS	12.00%



Method	N	Mean	CV%	U _m
Siemens/DPC Immulite 2000/2500	71	47.899	5.4	0.38
Beckman Dxi 600/800	27	48.006	5.2	0.60
Perkin Elmer DELFIA Xpress/AutoDELFIA	26	50.058	5.0	0.61
Beckman Access/LXi725	21	48.427	7.9	1.04
Roche Cobas 6000/8000	17	52.735	10.3	1.65
Roche Cobas 4000/e411	12	53.526	8.0	1.54
Siemens/DPC Immulite 1000	10	49.580	5.9	1.15
Siemens Centaur XP/XPT/Classic	8	53.634	7.3	1.73
Abbott Architect	5	49.665	2.4	0.66
Brahms Kryptor	5	44.983	4.6	1.17
Roche Elecsys	2	62.025	15.2	8.31

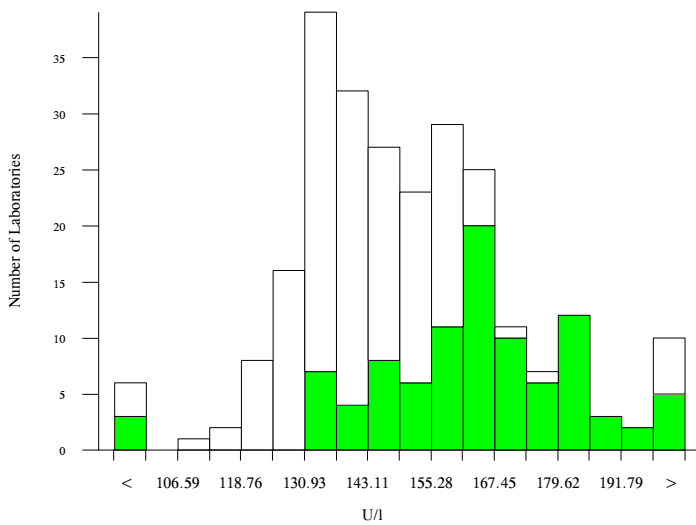


hCG, free beta, U/I

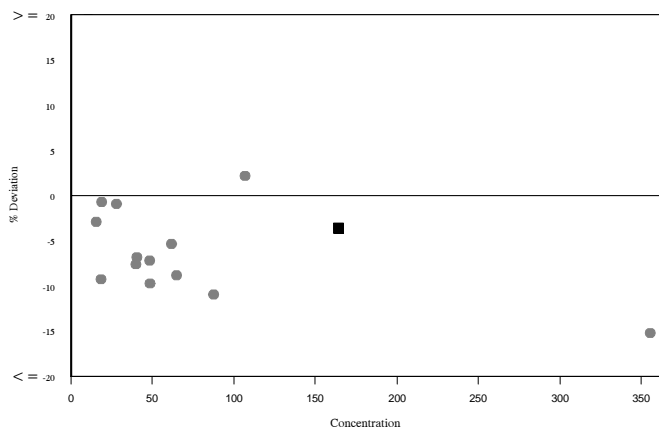
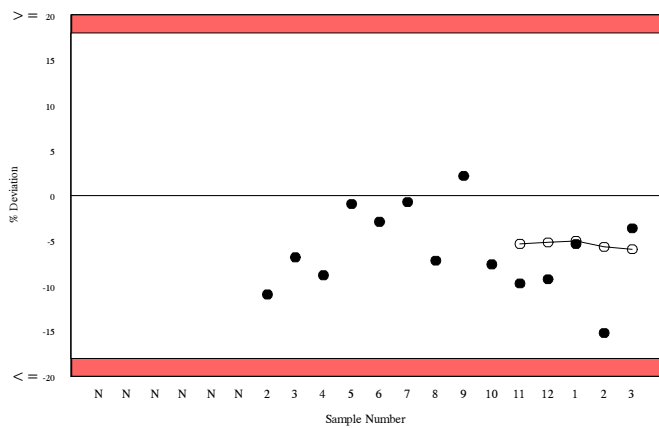
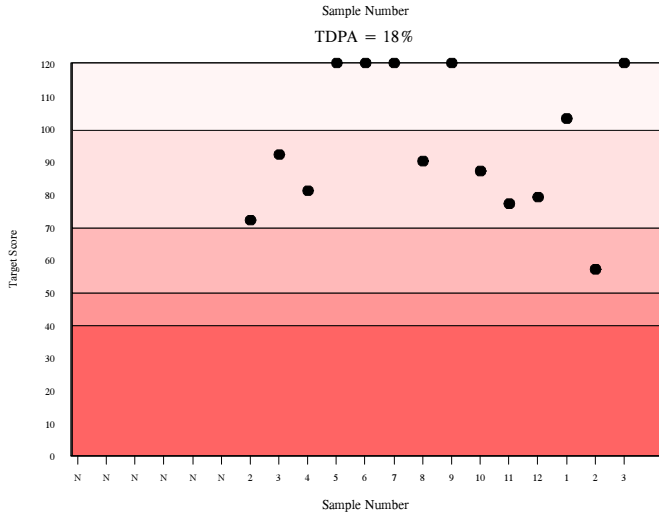
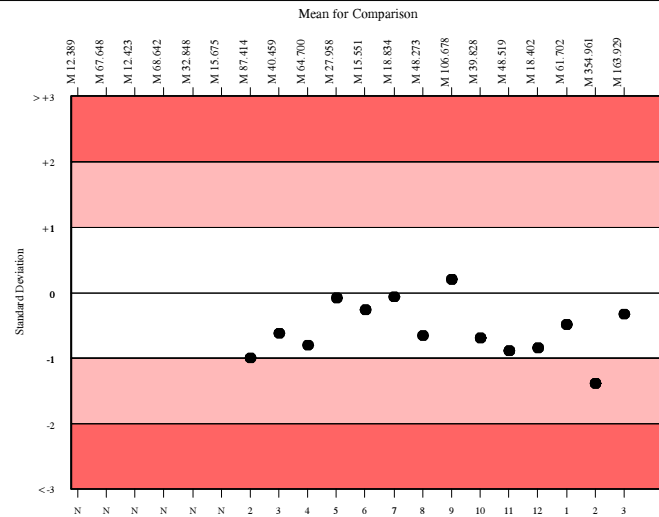
	N	Mean	CV%	U _m	SDPA	Exc.
All Methods	232	149.196	10.9	1.33	16.33	21
Siemens/DPC Immulite 2000/2500	88	163.929	9.2	2.00	17.94	9

▲ Your Result	158.000	SDI RMSDI	-0.33 -0.54
■ Mean for Comparison	163.929	TS RMTS	120 97
		%DEV RM%DEV	-3.6 -5.9

Acceptable limits derived from Biological Variation	N/A
Acceptable limits of performance for RIQAS	18.00%



Method	N	Mean	CV%	U _m
Siemens/DPC Immulite 2000/2500	88	163.929	9.2	2.00
Roche Cobas 4000/e411	41	145.030	6.9	1.94
Perkin Elmer DELFIA Xpress/AutoDELFIA	38	132.670	6.1	1.64
Roche Cobas 6000/8000	37	138.538	5.6	1.59
Brahms, Kryptor	15	157.393	2.6	1.32
Siemens/DPC Immulite 1000	10	145.750	10.6	6.12

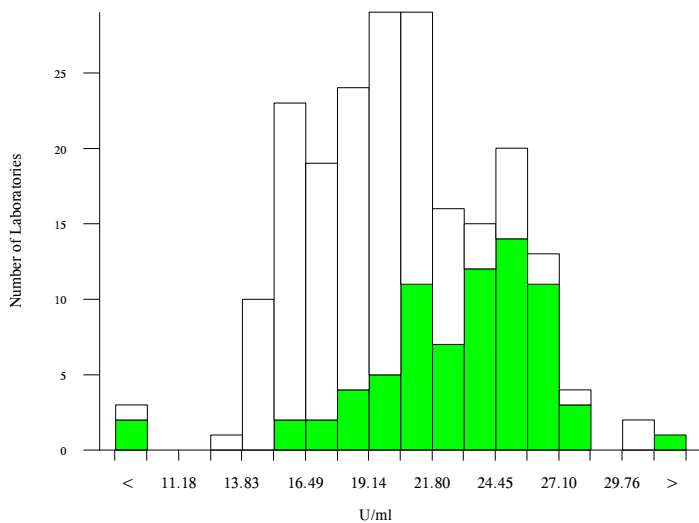


hCG, total, U/ml

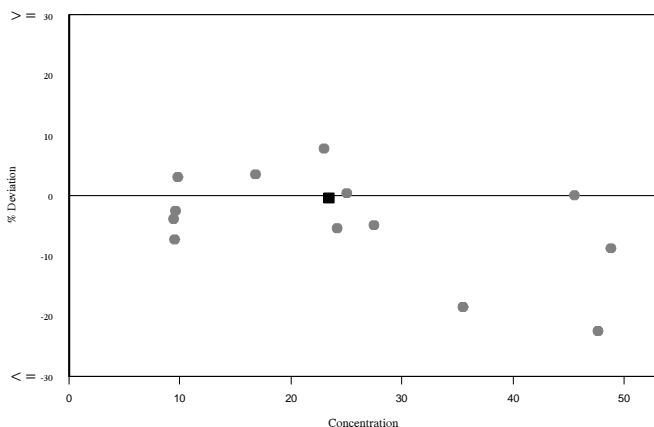
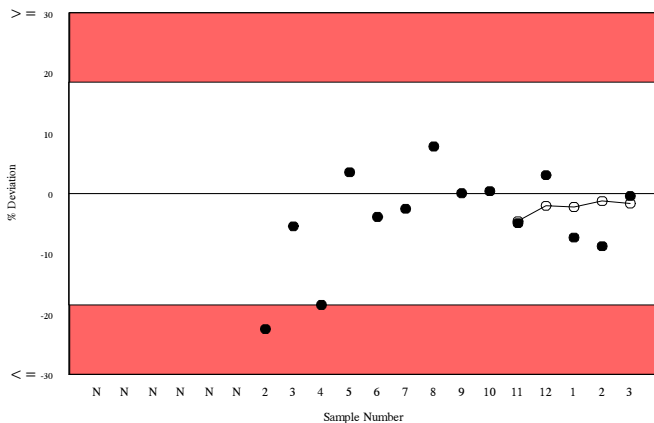
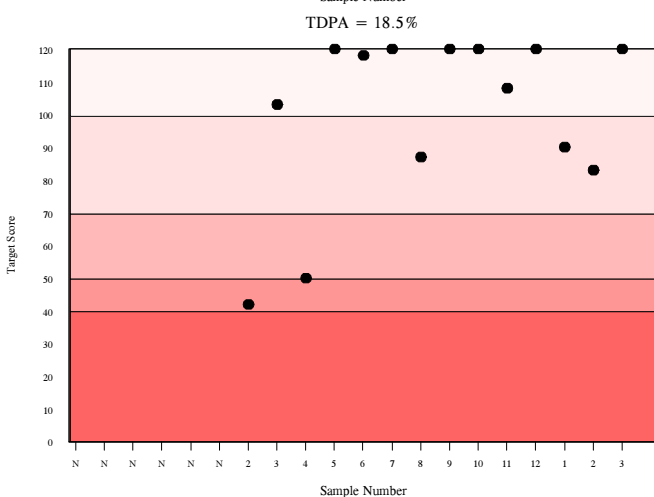
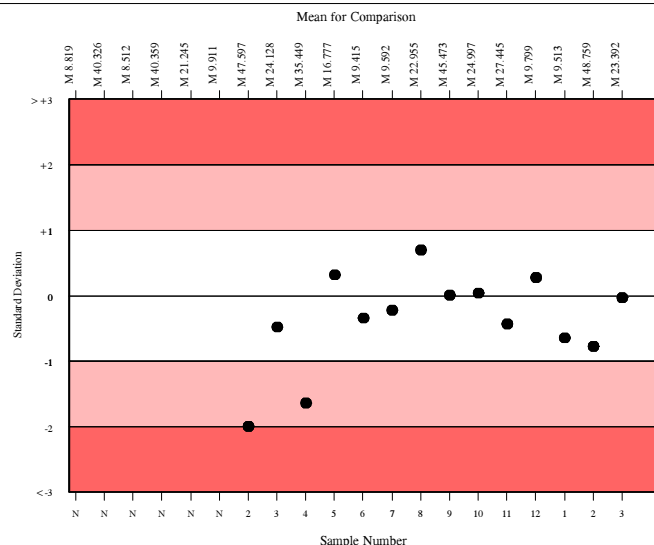
	N	Mean	CV%	U _m	SDPA	Exc.
All Methods	203	20.474	17.3	0.31	2.30	6
Siemens/DPC Immulite 2000/2500	68	23.392	11.0	0.39	2.63	6

▲ Your Result	23.300	SDI RMSDI	-0.04 -0.15
■ Mean for Comparison	23.392	TS RMTS	120 108
		%DEV RM%DEV	-0.4 -1.6

Acceptable limits derived from Biological Variation	N/A
Acceptable limits of performance for RIQAS	18.50%



Method	N	Mean	CV%	U _m
Siemens/DPC Immulite 2000/2500	68	23.392	11.0	0.39
Roche hCG + Beta	33	16.851	8.2	0.30
Beckman DXI Total BhCG (5th IS)	16	20.408	4.9	0.31
Beckman Access	15	19.473	7.7	0.49
Beckman DxI 600/800	13	20.339	13.2	0.93
Siemens/DPC Immulite 1000	11	25.702	12.0	1.16
Beckman Access Total BhCG (5th IS)	11	19.853	9.5	0.71
Abbott Architect I2000/8200	11	15.659	5.2	0.31
Perkin Elmer DELFIA Xpress/AutoDELFIA	7	20.864	5.5	0.55
Siemens Centaur XP/XPT/Classic	6	15.500	4.6	0.37
bioMerieux, Vidas/Mini Vidas	3	23.564	8.3	1.41
Roche hCG STAT(intact)	2	17.860	19.8	3.13



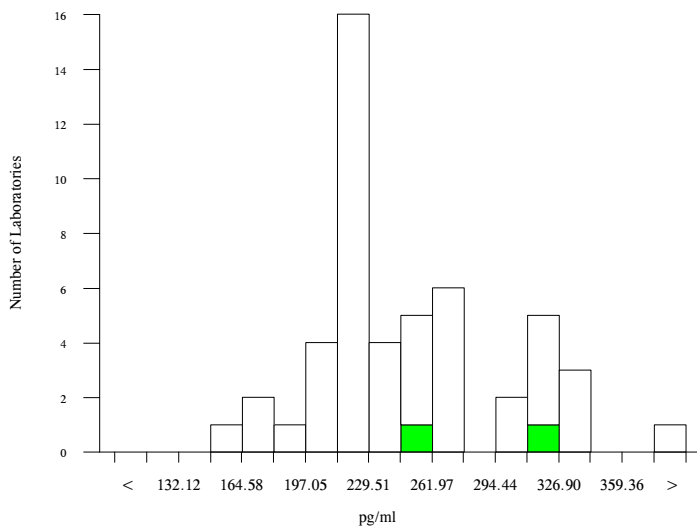
Inhibin A, pg/ml

- All Methods
- Stat Fax Elisa Readers

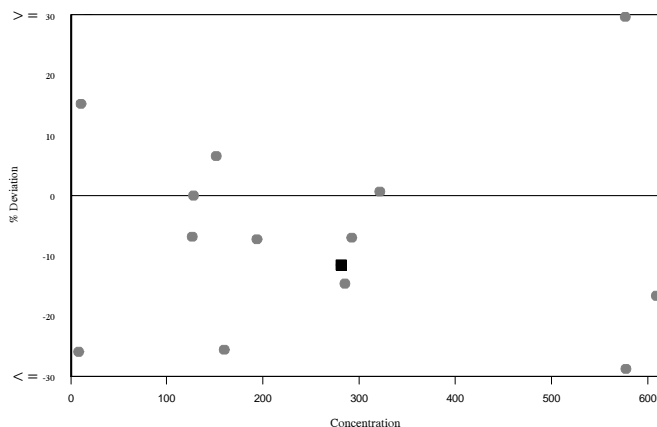
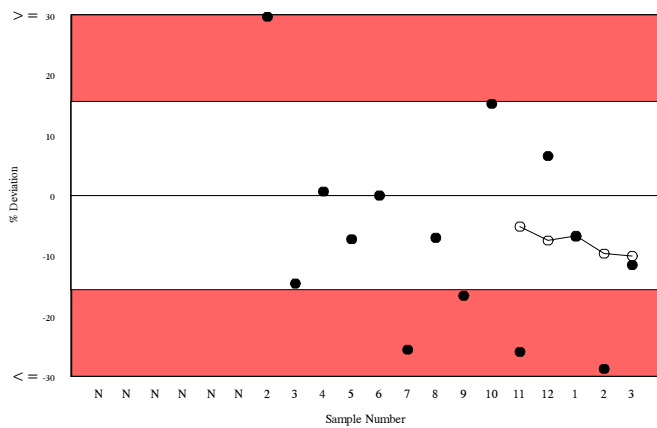
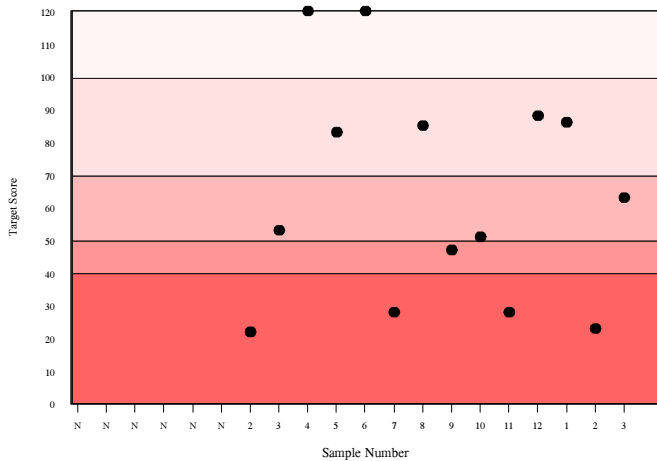
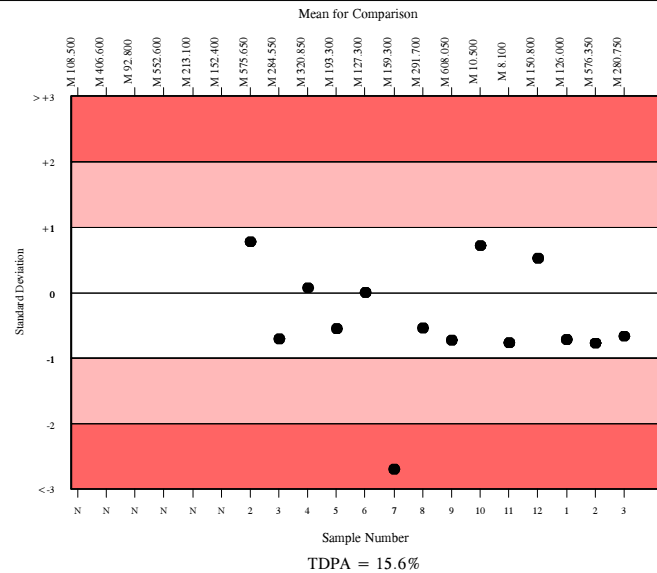
N	Mean	CV%	U _m	SDPA	Exc.
48	245.746	17.6	7.81	24.58a	2
2	280.750	16.3	40.44	48.42a	0

▲ Your Result	248.400	SDI	-0.67
		RMSDI	-0.57
■ Mean for Comparison	280.750	TS	63
		RMTS	61
		%DEV	-11.5
		RM%DEV	-10.0
The mean for comparison is not statistically significant			

Acceptable limits derived from Biological Variation	N/A
Acceptable limits of performance for RIQAS	15.60%



Method	N	Mean	CV%	U _m
Beckman Access	11	218.380	3.6	2.97
Beckman Dxl 600/800	12	224.392	7.2	5.86
ELISA	10	285.395	11.3	12.79
Beckman Inhibin A Active ELISA	6	250.825	7.8	9.93
Perkin Elmer DELFIA Xpress/AutoDELFIA	3	331.492	1.2	2.95
Stat Fax Elisa Readers	2	280.750	16.3	40.44



RIQAS

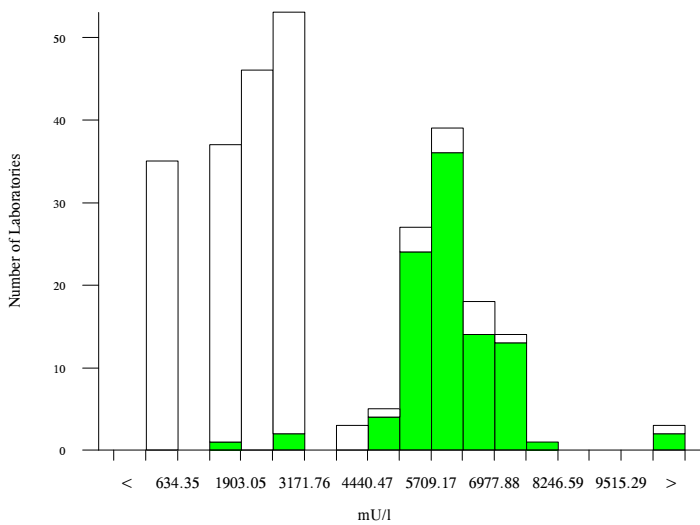
0010

PAPP-A, mU/l

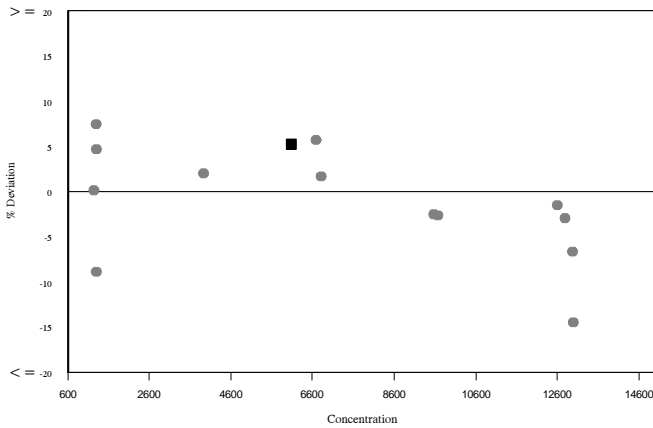
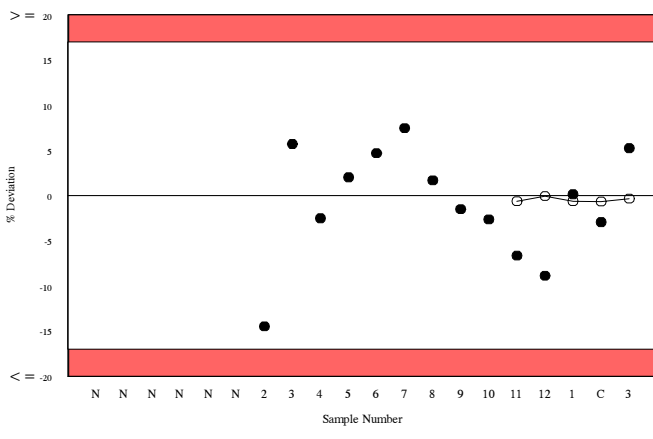
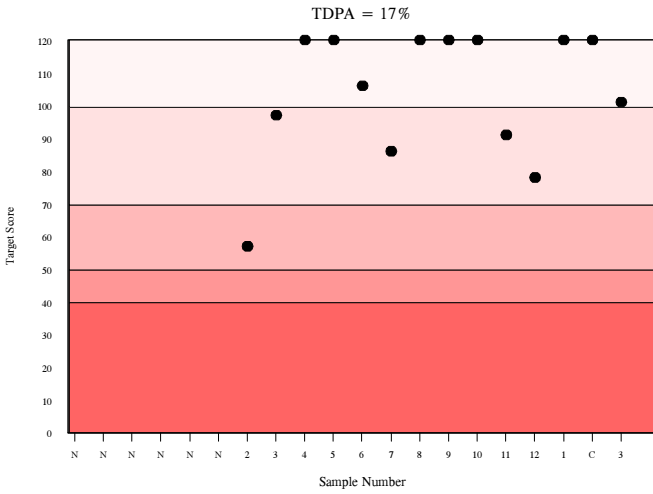
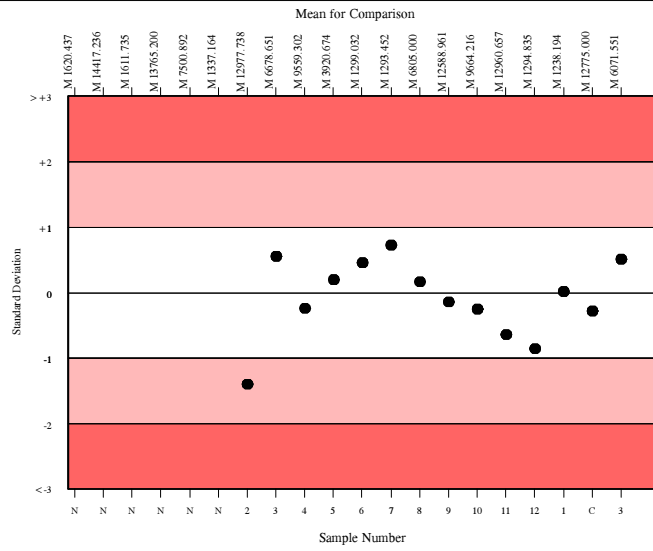
	N	Mean	CV%	U _m	SDPA	Exc.
All Methods	276	3501.353	63.3	166.70	398.30a	5
Siemens/DPC Immulite 2000/2500	87	6071.551	9.5	77.00	627.50	10

▲ Your Result	6390.000	SDI	0.51
		RMSDI	-0.03
■ Mean for Comparison	6071.551	TS	101
		RMTS	106
		%DEV	5.2
		RM%DEV	-0.3

Acceptable limits derived from Biological Variation	15.1%
Acceptable limits of performance for RIQAS	17.00%



Method	N	Mean	CV%	U _m
Siemens/DPC Immulite 2000/2500	87	6071.551	9.5	77.00
Roche Cobas 4000/e411	35	2540.485	6.0	32.40
Roche Cobas 6000/8000	32	2579.468	2.7	15.20
Perkin Elmer DELFIA Xpress/AutoDELFIA	33	1869.235	6.1	24.80
Beckman DxI 600/800	20	157.224	7.8	3.40
Brahms, Kryptor	13	1761.076	3.5	21.50
Beckman Access	12	159.928	5.9	3.40
Siemens/DPC Immulite 1000	9	6481.111	9.3	251.40

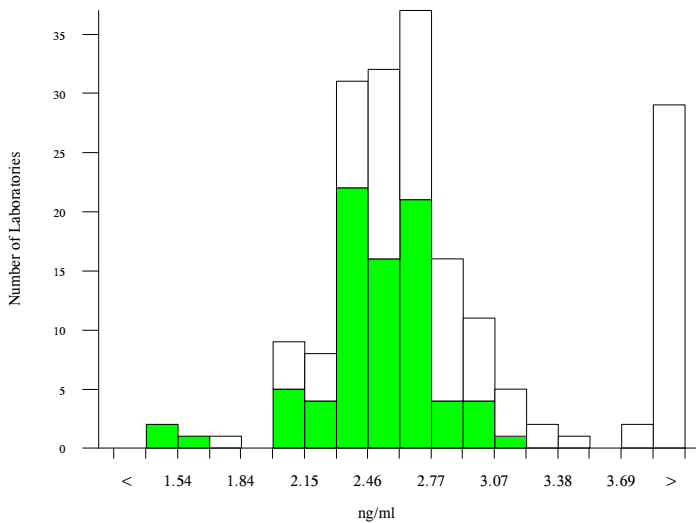


Unconjugated estriol, ng/ml

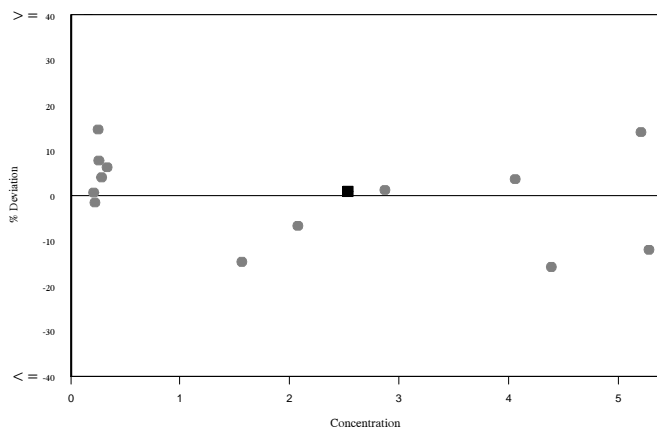
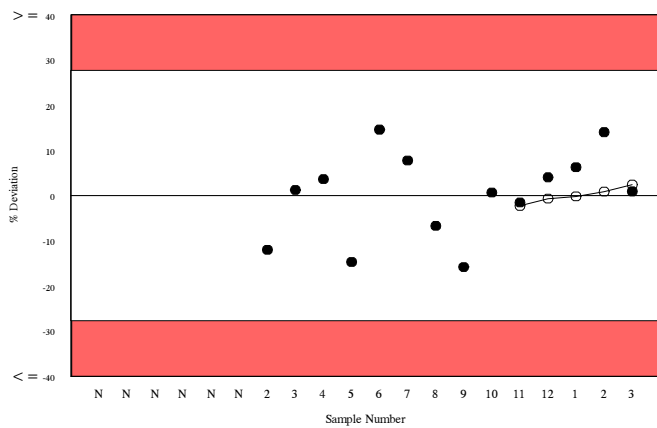
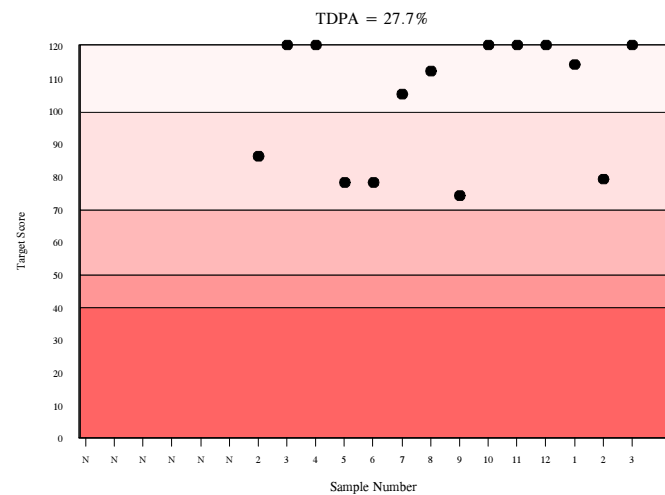
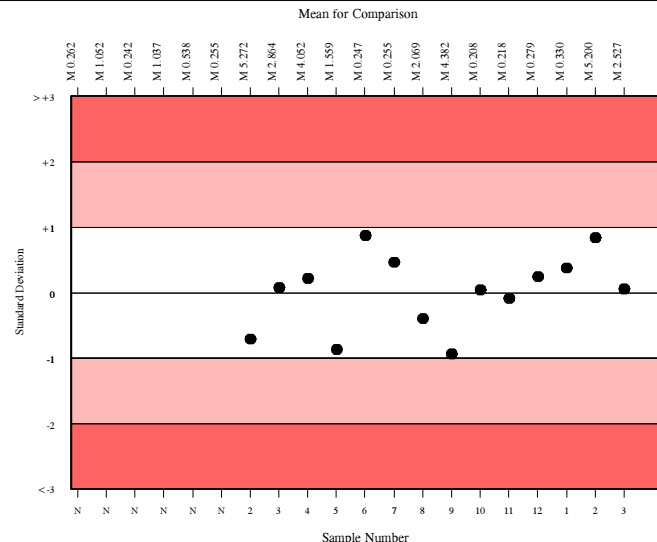
	N	Mean	CV%	U _m	SDPA	Exc.
All Methods	160	2.617	15.7	0.04	0.44	27
DPC Immulite 2000/2500	73	2.527	7.9	0.03	0.43	7

▲ Your Result	2.550	SDI	0.06
		RMSDI	0.14
■ Mean for Comparison	2.527	TS	120
		RMTS	104
		%DEV	0.9
		RM%DEV	2.4

Acceptable limits derived from Biological Variation	N/A
Acceptable limits of performance for RIQAS	27.70%



Method	N	Mean	CV%	U _m
DPC Immulite 2000/2500	73	2.527	7.9	0.03
Beckman Dxi 600/800	31	2.684	8.0	0.05
Perkin Elmer DELFIA Xpress/AutoDELFIA	24	5.789	4.7	0.07
Beckman Access	19	2.726	7.7	0.06
DPC Immulite 1000	11	2.498	10.6	0.10
Brahms, Kryptor	5	2.202	11.4	0.14
IBL ELISA	3	3.680	17.1	0.45
Demeditec ELISA	2	3.235	2.8	0.08



Analyte	Mean for Comparison	Your Result	SDI	RMSDI	%DEV	RM%DEV	TS	RMTS	Performance
AFP	47.899	44.400	-1.00	-0.27	-7.3	-2.0	72	94	
hCG, free beta	163.929	158.000	-0.33	-0.54	-3.6	-5.9	120	97	
hCG, total	23.392	23.300	-0.04	-0.15	-0.4	-1.6	120	108	
Inhibin A	280.750	248.400	-0.67	-0.57	-11.5	-10.0	63	61	
PAPP-A	6071.551	6390.000	0.51	-0.03	5.2	-0.3	101	106	
Unconjugated estriol	2.527	2.550	0.06	0.14	0.9	2.4	120	104	

ORMSDI -0.24

ORM%DEV -2.9

ORMTS 95

END OF REPORT

