

Dena Laboratory

# MATERNAL SCREENING

CYCLE 9 SAMPLE 3

## Explanation of codes used in this report

R - Results removed due to reconstitution error  
N - No result returned  
C - Result corrected

Authorised by: Stephen Doherty, RIQAS Manager

Issue No: 1

Issue Date: 21/03/2017

Randox Laboratories Limited  
55 Diamond Road  
CRUMLIN BT29 4QY  
Tel: +44 (0)28 9445 4399  
Fax: +44 (0)28 9445 4398  
Email: mail@riqas.com

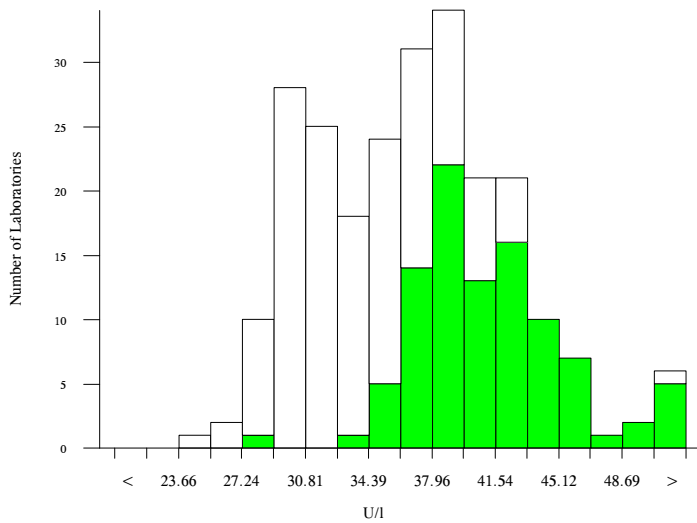


# hCG, free beta, U/I

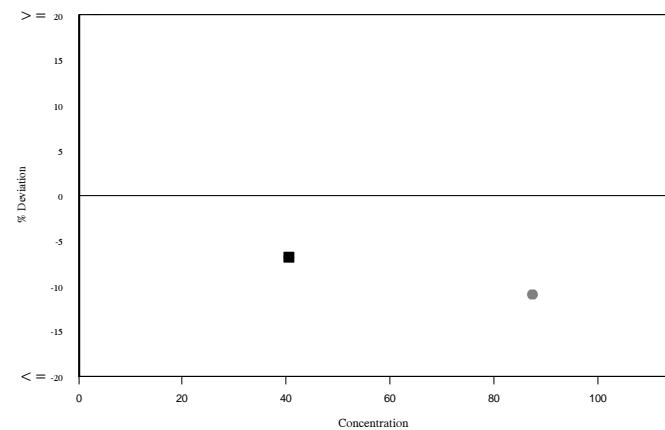
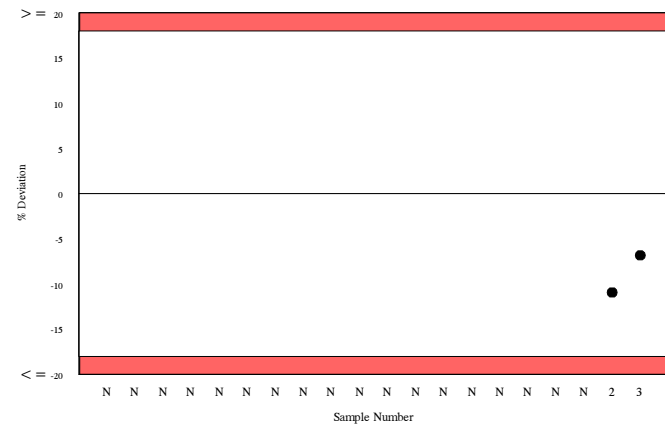
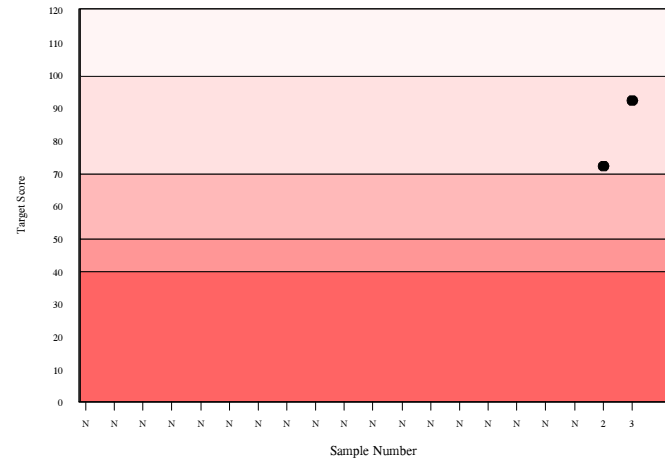
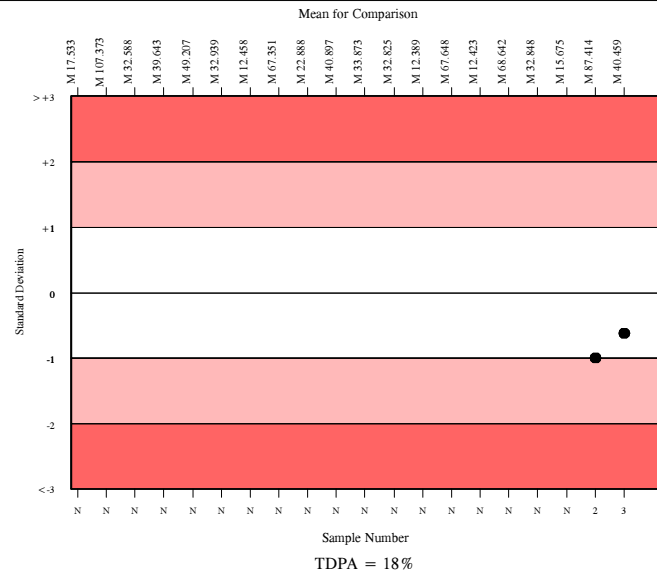
	N	Mean	CV%	U <sub>m</sub>	SDPA	Exc.
All Methods	229	36.182	13.2	0.39	3.96	13
Siemens/DPC Immulite 2000/2500	87	40.459	7.3	0.39	4.43	10

▲ Your Result	37.700	SDI RMSDI	-0.62 Too Few
■ Mean for Comparison	40.459	TS RMTS	92 Too Few
		%DEV RM%DEV	-6.8 Too Few

Acceptable limits derived from Biological Variation	N/A
Acceptable limits of performance for RIQAS	18.00%



Method	N	Mean	CV%	U <sub>m</sub>
Siemens/DPC Immulite 2000/2500	87	40.459	7.3	0.39
Perkin Elmer DELFIA Xpress/AutoDELFIA	38	35.021	7.9	0.56
Roche Cobas 4000/e411	31	31.285	5.5	0.39
Roche Cobas 6000/8000	27	29.940	3.4	0.24
Siemens/DPC Immulite 1000	16	39.278	5.8	0.71
Brahms, Krytor	14	37.199	2.6	0.32
Roche Elecsys 2010/1010	2	34.395	13.4	4.07

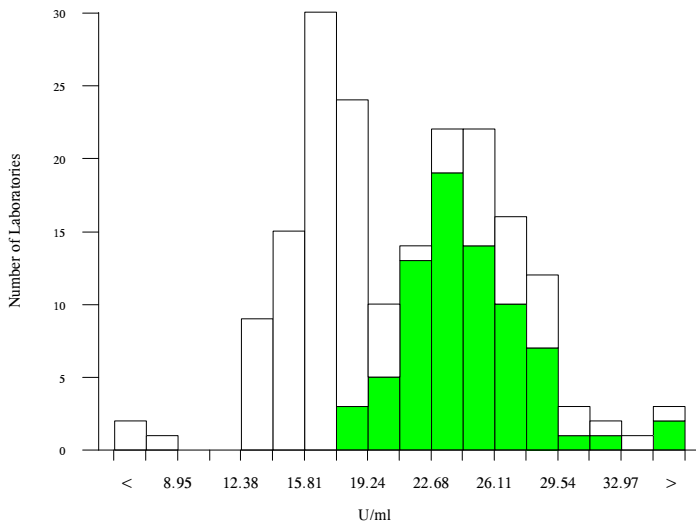


# hCG, total, U/ml

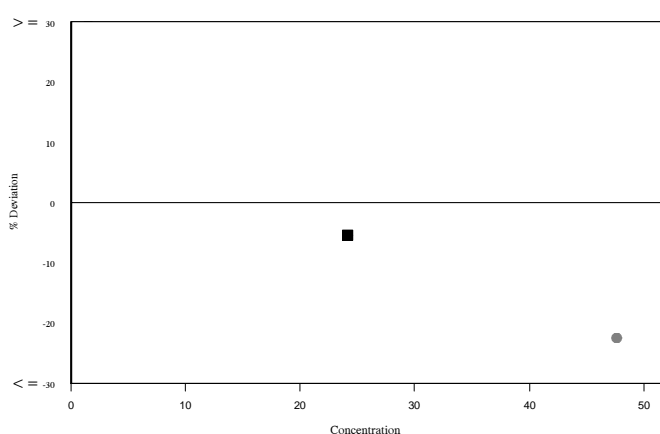
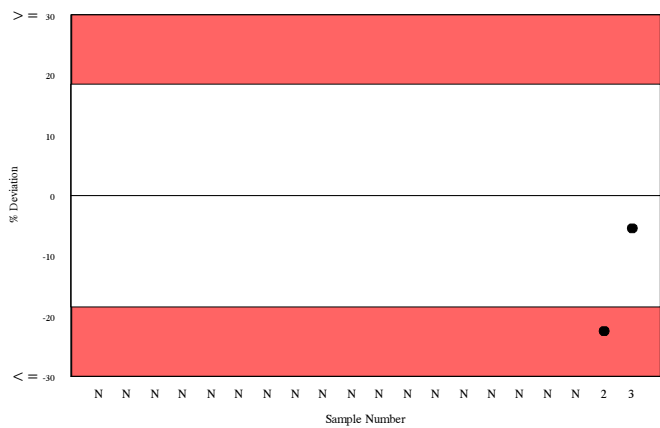
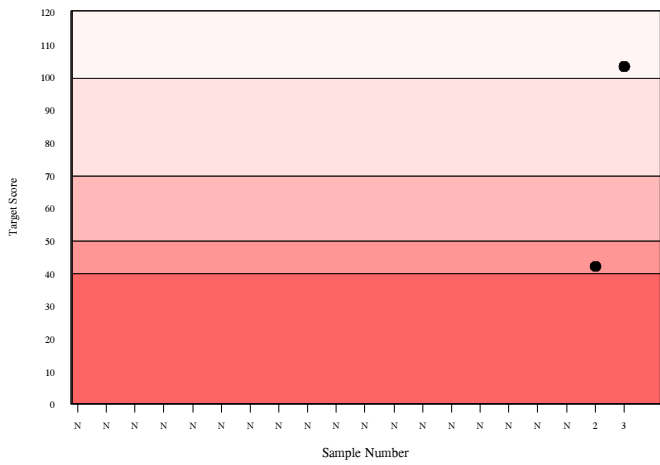
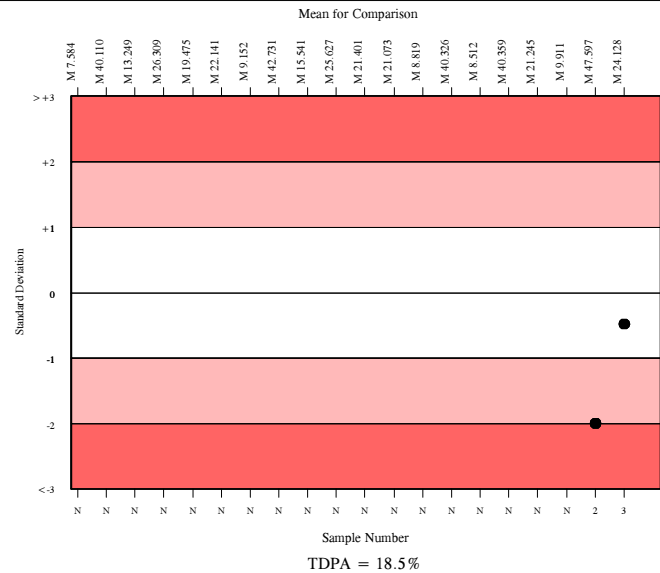
	N	Mean	CV%	U <sub>m</sub>	SDPA	Exc.
All Methods	175	20.965	21.8	0.43	2.36	12
Siemens/DPC Immulite 2000/2500	70	24.128	10.5	0.38	2.71	5

▲ Your Result	22.820	SDI	-0.48
		RMSDI	Too Few
■ Mean for Comparison	24.128	TS	103
		RMTS	Too Few
		%DEV	-5.4
		RM%DEV	Too Few

Acceptable limits derived from Biological Variation	N/A
Acceptable limits of performance for RIQAS	18.50%



Method	N	Mean	CV%	U <sub>m</sub>
Siemens/DPC Immulite 2000/2500	70	24.128	10.5	0.38
Roche hCG + Beta	26	16.752	5.1	0.21
Siemens/DPC Immulite 1000	15	26.776	10.1	0.87
Beckman DXI Total BhCG (5th IS)	15	18.077	6.4	0.37
Abbott Architect I2000/8200	10	14.608	5.8	0.34
Beckman Access	7	18.000	8.8	0.75
Beckman DxI 600 / 800	7	16.653	13.0	1.03
Beckman Access Total BhCG (5th IS)	6	18.709	10.1	0.96
Siemens Centaur XP/XPT/Classic	5	13.770	9.2	0.71
Perkin Elmer DELFIA Xpress/AutoDELFIA	6	26.091	7.0	0.93
bioMerieux, Vidas/Mini Vidas	2	21.300	49.1	9.25
Roche hCG STAT(intact)	2	26.054	7.1	1.64



# Inhibin A, pg/ml

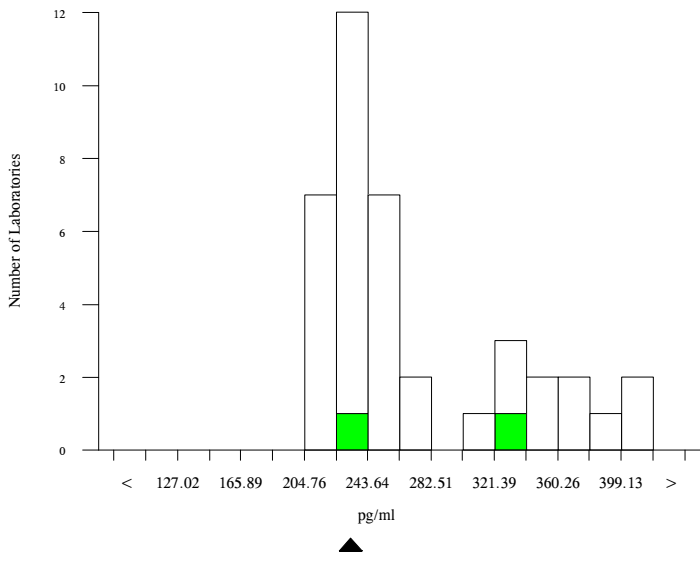
- All Methods
- Stat Fax Elisa Readers

N	Mean	CV%	U <sub>m</sub>	SDPA	Exc.
37	263.080	19.7	10.65	27.13a	2
2	284.550	20.7	51.94	58.53a	0

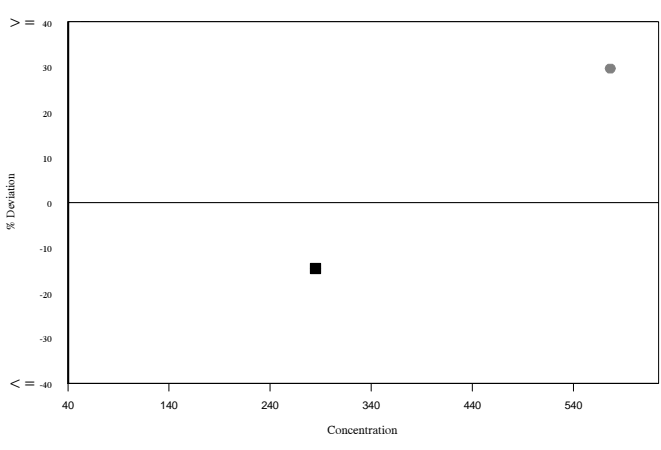
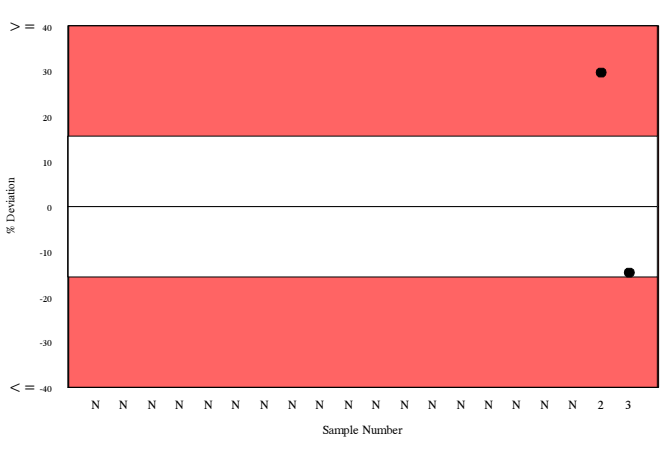
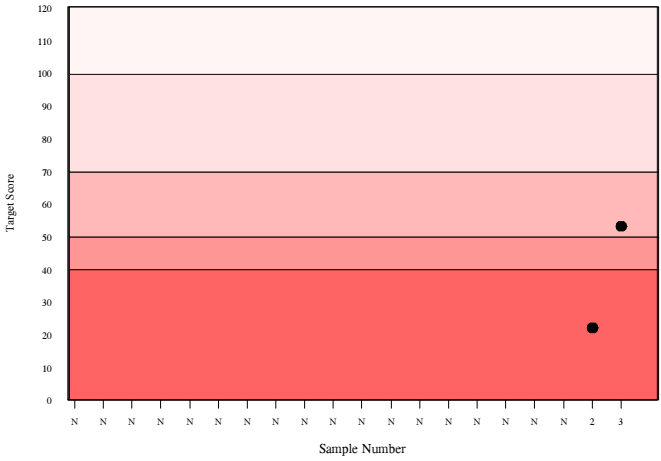
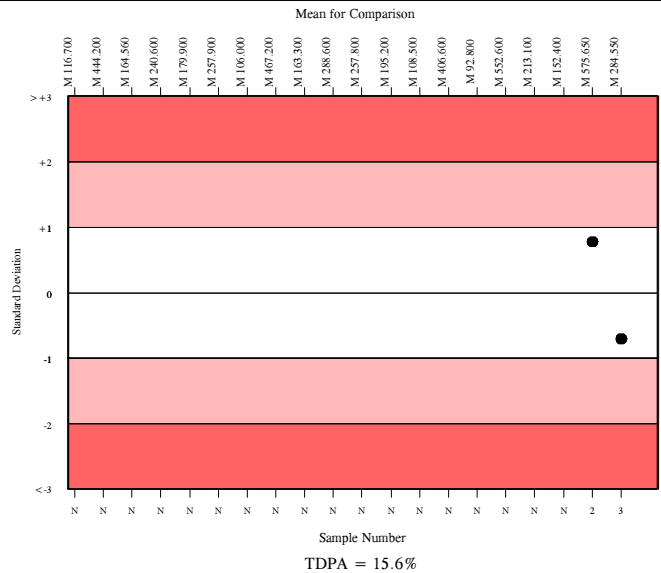
<b>▲ Your Result</b>	243.000	SDI	-0.71
		RMSDI	Too Few
<b>■ Mean for Comparison</b>	284.550	TS	53
		RMTS	Too Few
		%DEV	-14.6
		RM%DEV	Too Few

**The mean for comparison is not statistically significant**

Acceptable limits derived from Biological Variation	N/A
Acceptable limits of performance for RIQAS	15.60%



Method	N	Mean	CV%	U <sub>m</sub>
Beckman DxI 600 / 800	14	234.820	7.3	5.70
Active Inhibin A Elisa	10	324.166	17.9	22.89
Beckman Access	10	231.574	5.0	4.54
Perkin Elmer DELFIA Xpress/AutoDELFIA	2	375.894	4.9	16.26
Stat Fax Elisa Readers	2	284.550	20.7	51.94

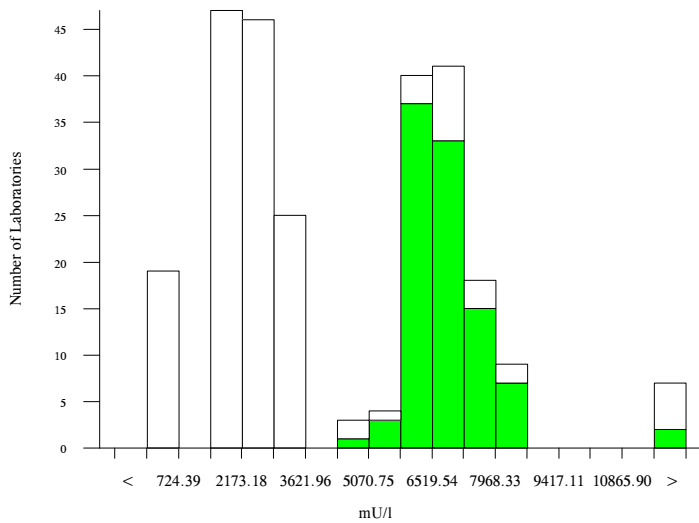


# PAPP-A, mU/l

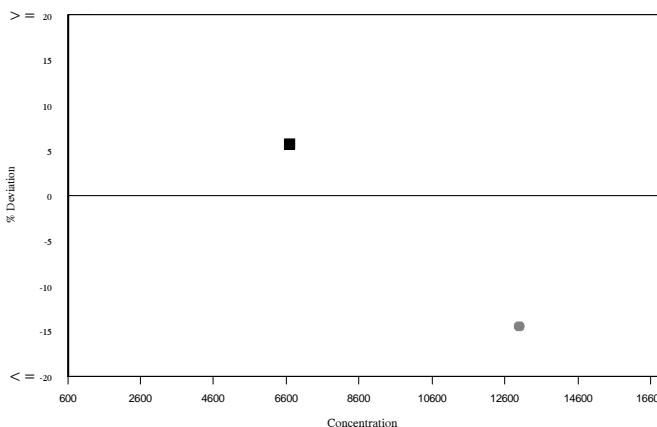
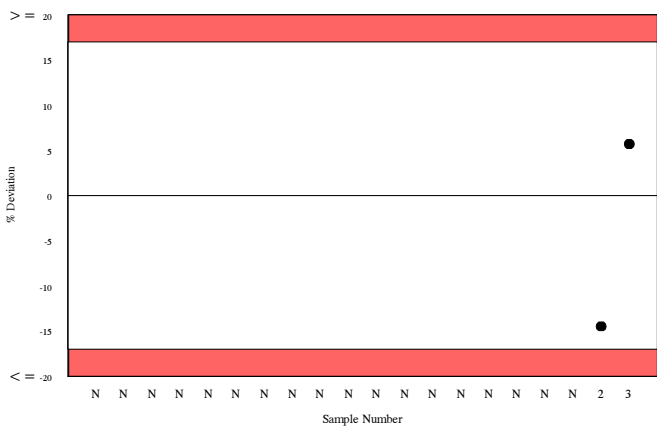
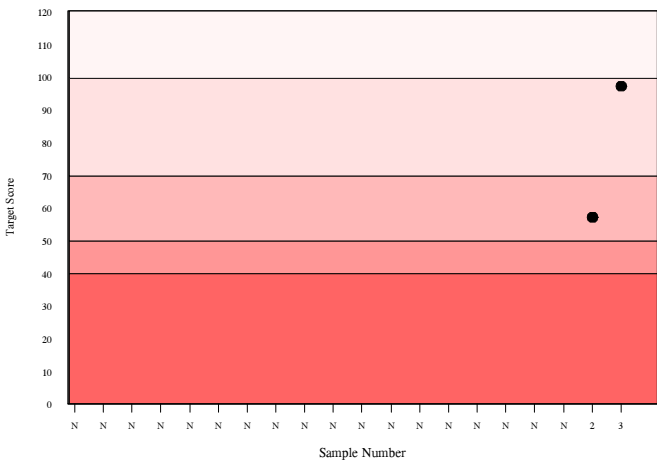
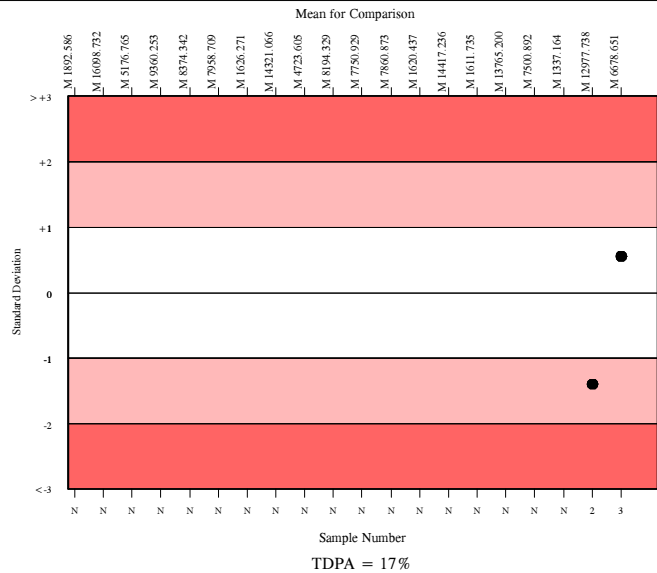
	N	Mean	CV%	U <sub>m</sub>	SDPA	Exc.
<input type="checkbox"/> All Methods	252	4238.800	57.8	192.90	478.50a	7
<input checked="" type="checkbox"/> Siemens/DPC Immulite 2000/2500	89	6678.651	8.1	71.70	690.20	9

<input checked="" type="checkbox"/> Your Result	7060.000	SDI	0.55
		RMSDI	Too Few
<input checked="" type="checkbox"/> Mean for Comparison	6678.651	TS	97
		RMTS	Too Few
		%DEV	5.7
		RM%DEV	Too Few

Acceptable limits derived from Biological Variation	15.1%
Acceptable limits of performance for RIQAS	17.00%



Method	N	Mean	CV%	U <sub>m</sub>
Siemens/DPC Immulite 2000/2500	89	6678.651	8.1	71.70
Perkin Elmer DELFIA Xpress/AutoDELFIA	34	1952.215	6.4	26.90
Roche Cobas 6000/8000	31	2816.741	5.7	35.70
Roche Cobas 4000/e411	31	2765.096	8.0	49.80
Siemens/DPC Immulite 1000	13	6856.923	6.2	148.40
Brahms, Krytor	14	2020.785	5.0	33.60
Beckman Dxl 600 / 800	15	201.234	6.8	4.30
Beckman Access	4	194.520	5.3	6.50
Roche Elecsys 2010/1010	2	4005.000	44.3	1568.70



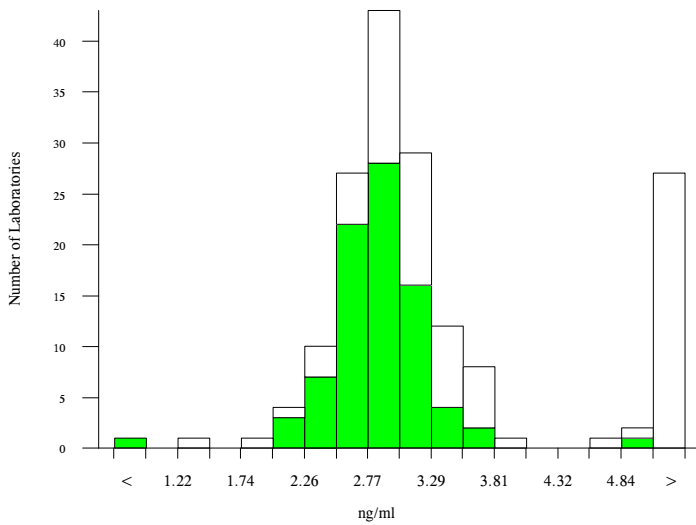
# Unconjugated estriol, ng/ml

- All Methods
- DPC, Immulite 2000/2500

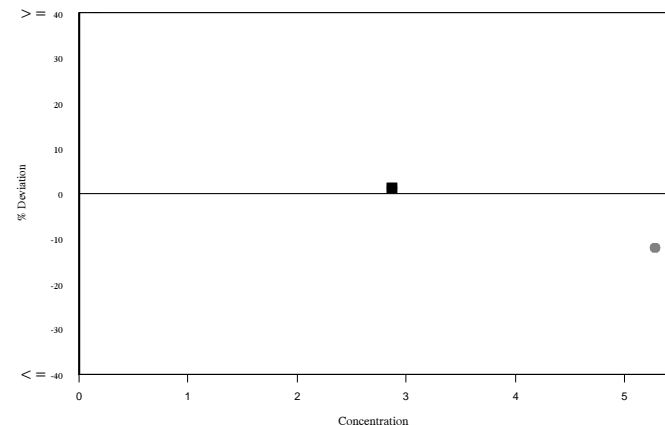
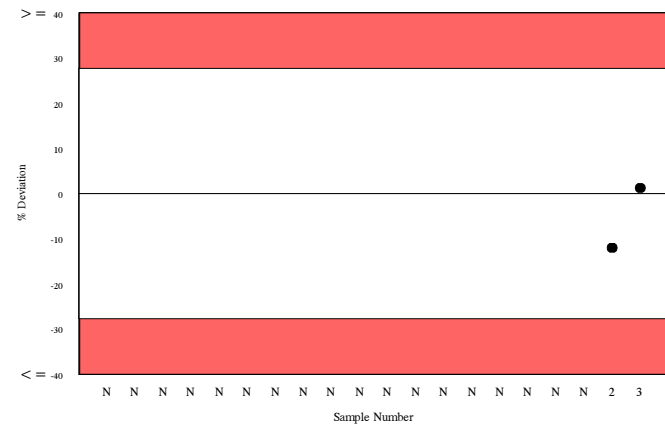
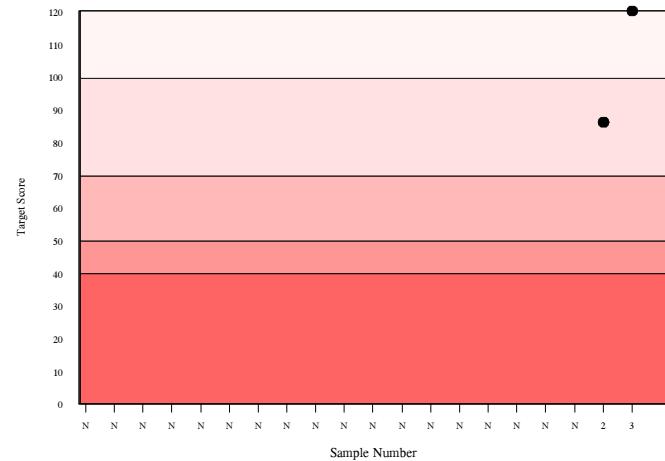
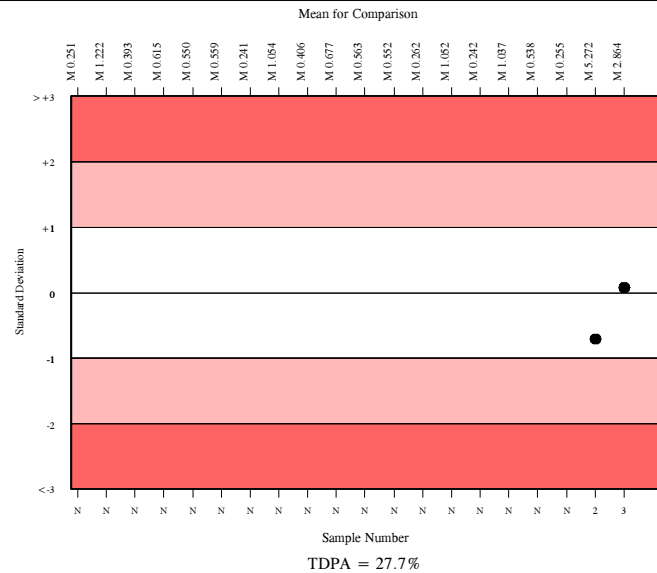
N	Mean	CV%	U <sub>m</sub>	SDPA	Exc.
144	3.037	22.7	0.07	0.51	23
76	2.864	8.7	0.04	0.48	8

<span style="color: green;">▲</span> Your Result	2.900	SDI	0.07
		RMSDI	Too Few
<span style="color: green;">■</span> Mean for Comparison	2.864	TS	120
		RMTS	Too Few
		%DEV	1.2
		RM%DEV	Too Few

Acceptable limits derived from Biological Variation	N/A
Acceptable limits of performance for RIQAS	27.70%



Method	N	Mean	CV%	U <sub>m</sub>
DPC, Immulite 2000/2500	76	2.864	8.7	0.04
Perkin Elmer DELFIA Xpress/AutoDELFIA	21	7.234	6.1	0.12
Beckman Dxi 600 / 800	22	3.245	6.3	0.05
DPC, Immulite 1000	14	2.769	6.9	0.06
Beckman Access	11	3.252	10.7	0.13
Brahms, Kryptor	2	2.314	7.9	0.16
IBL ELISA	3	5.103	10.3	0.38
DRG Elisa	2	4.880	25.5	1.10



Analyte	Mean for Comparison	Your Result	SDI	RMSDI	%DEV	RM%DEV	TS	RMTS	Performance
AFP	58.556	55.200	-0.79	Too Few	-5.7	Too Few	82	Too Few	
hCG, free beta	40.459	37.700	-0.62	Too Few	-6.8	Too Few	92	Too Few	
hCG, total	24.128	22.820	-0.48	Too Few	-5.4	Too Few	103	Too Few	
Inhibin A	284.550	243.000	-0.71	Too Few	-14.6	Too Few	53	Too Few	
PAPP-A	6678.651	7060.000	0.55	Too Few	5.7	Too Few	97	Too Few	
Unconjugated estriol	2.864	2.900	0.07	Too Few	1.2	Too Few	120	Too Few	

ORMSDI N/A

ORM%DEV N/A

ORMTS N/A

END OF REPORT

