

Dena Laboratory

MATERNAL SCREENING

CYCLE 9 SAMPLE 11

Explanation of codes used in this report

R - Results removed due to reconstitution error
N - No result returned
C - Result corrected

Authorised by: Stephen Doherty, RIQAS Manager

Issue No: 1

Issue Date: 22/11/2017

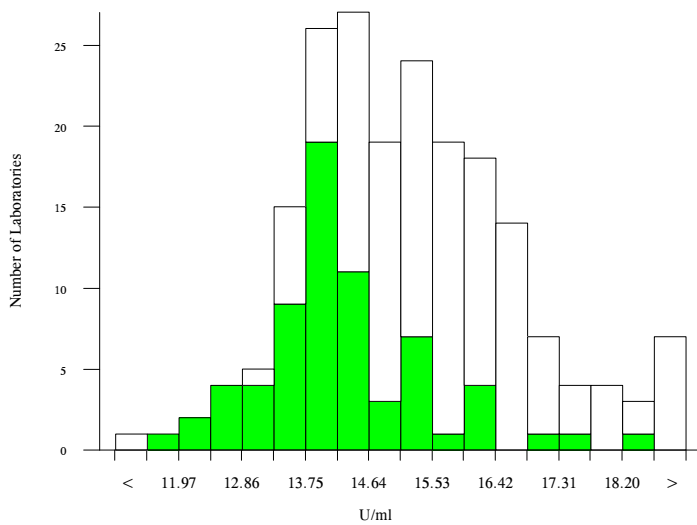
Randox Laboratories Limited
55 Diamond Road
CRUMLIN BT29 4QY
Tel: +44 (0)28 9445 4399
Fax: +44 (0)28 9445 4398
Email: mail@riqas.com

AFP, U/ml

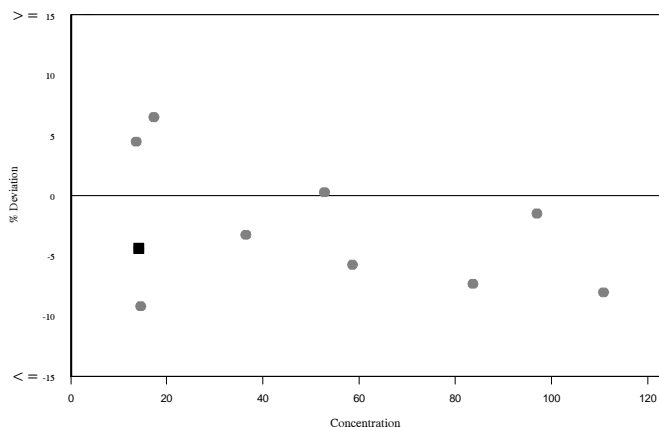
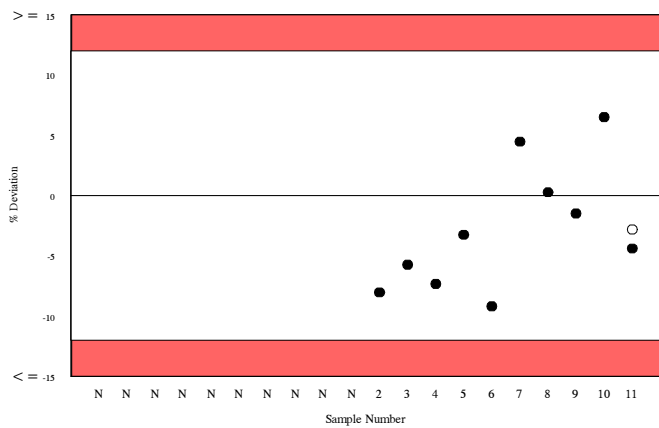
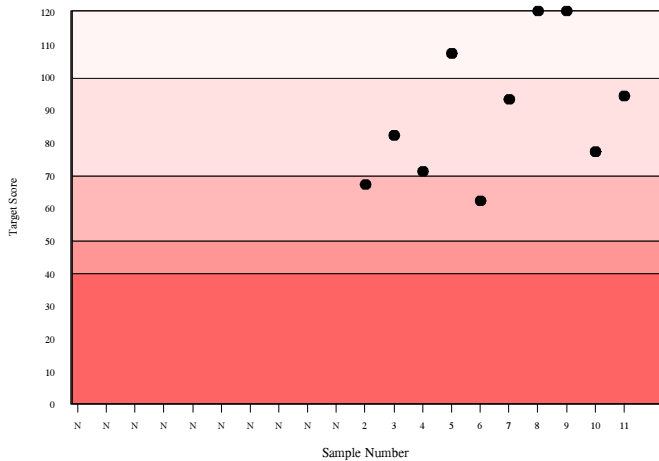
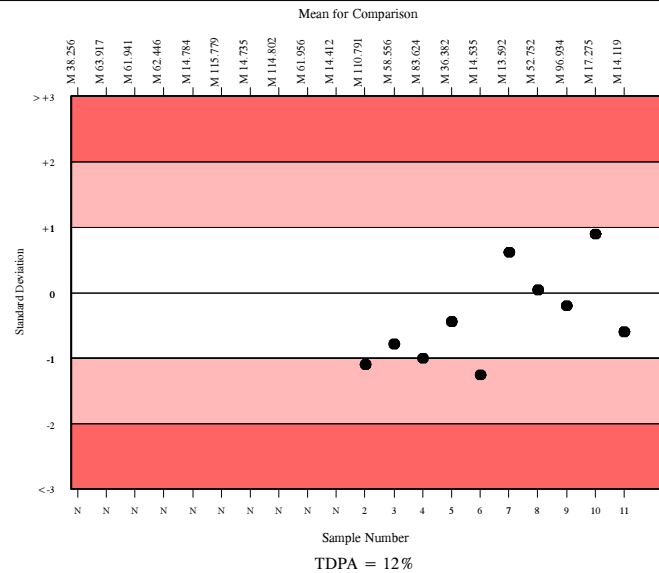
	N	Mean	CV%	U _m	SDPA	Exc.
<input type="checkbox"/> All Methods	185	15.090	7.9	0.11	1.10	15
<input checked="" type="checkbox"/> Siemens/DPC Immulite 2000/2500	60	14.119	5.7	0.13	1.03	8

<input checked="" type="checkbox"/> Your Result	13.500	SDI RMSDI	-0.60 -0.39
<input checked="" type="checkbox"/> Mean for Comparison	14.119	TS RMTS	94 89
		%DEV RM%DEV	-4.4 -2.8

Acceptable limits derived from Biological Variation	21.9%
Acceptable limits of performance for RIQAS	12.00%



Method	N	Mean	CV%	U _m
Siemens/DPC Immulite 2000/2500	60	14.119	5.7	0.13
Perkin Elmer DELFIA Xpress/AutoDELFIA	26	16.050	5.5	0.22
Beckman DxI 600 / 800	27	15.042	5.4	0.20
Roche Cobas 6000/8000	15	16.372	5.1	0.27
Roche Cobas 4000/e411	11	16.032	10.5	0.63
Beckman Access/LXi725	13	15.038	8.3	0.43
Siemens/DPC Immulite 1000	8	14.725	3.7	0.24
Siemens Centaur XP/XPT/Classic	6	16.415	3.1	0.26
Abbott Architect	5	14.527	2.5	0.21
Brahms Kryptor	5	14.319	2.8	0.22
Roche Elecsys	2	16.065	7.5	1.07

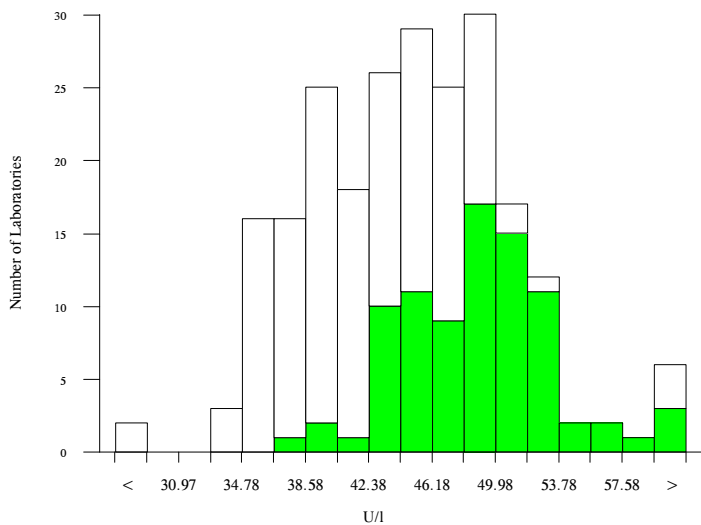


hCG, free beta, U/I

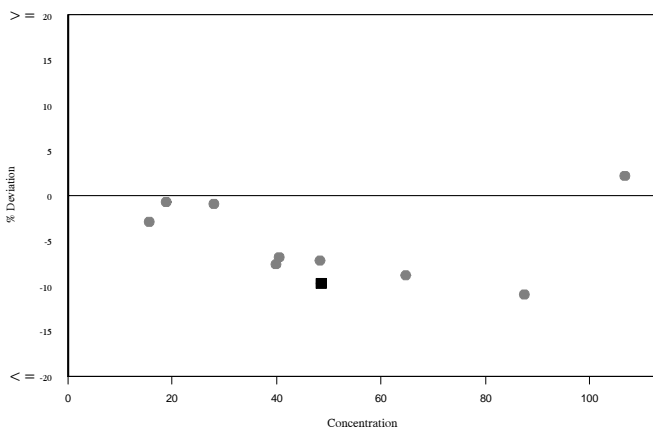
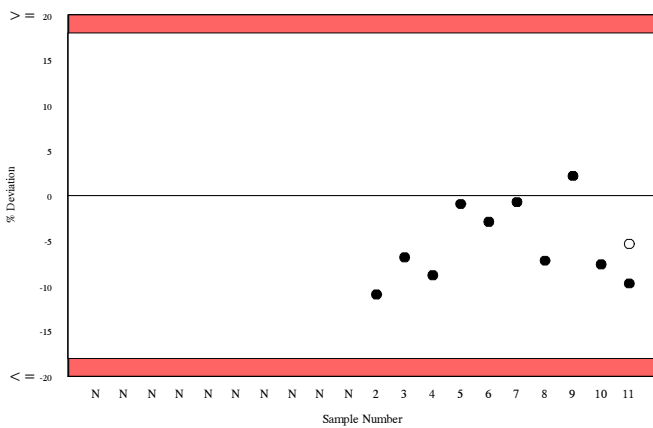
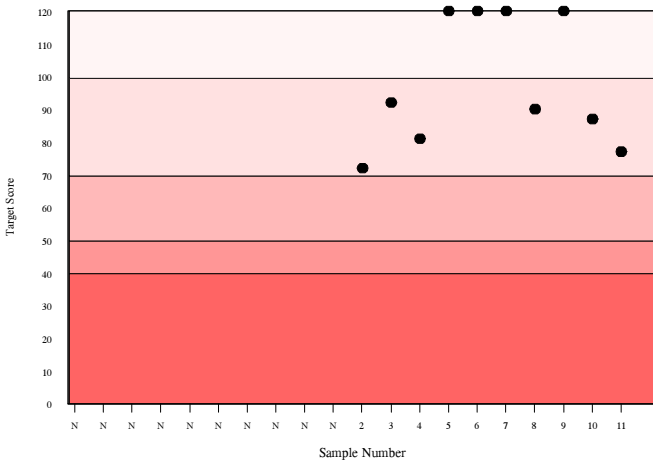
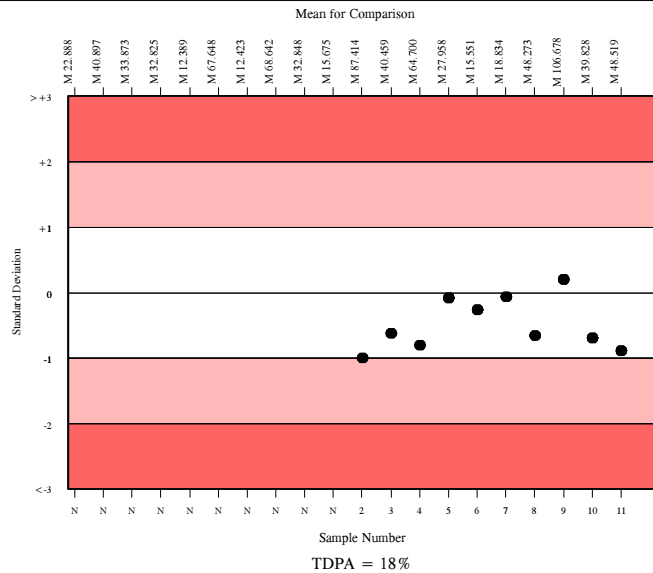
	N	Mean	CV%	U _m	SDPA	Exc.
□ All Methods	219	44.284	11.4	0.43	4.85	11
■ Siemens/DPC Immulite 2000/2500	77	48.519	7.0	0.49	5.31	8

▲ Your Result	43.800	SDI RMSDI	-0.89 -0.49
■ Mean for Comparison	48.519	TS RMTS	77 97
		%DEV RM%DEV	-9.7 -5.3

Acceptable limits derived from Biological Variation	N/A
Acceptable limits of performance for RIQAS	18.00%



Method	N	Mean	CV%	U _m
Siemens/DPC Immulite 2000/2500	77	48.519	7.0	0.49
Perkin Elmer DELFIA Xpress/AutoDELFIA	41	43.500	4.9	0.42
Roche Cobas 4000/e411	29	38.624	5.9	0.53
Roche Cobas 6000/8000	29	37.380	4.9	0.42
Brahms, Krytor	18	46.903	3.5	0.48
Siemens/DPC Immulite 1000	11	47.050	4.3	0.77

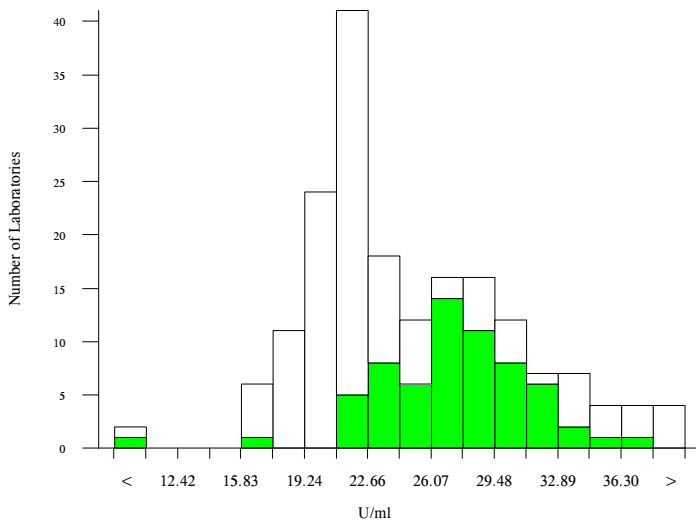


hCG, total, U/ml

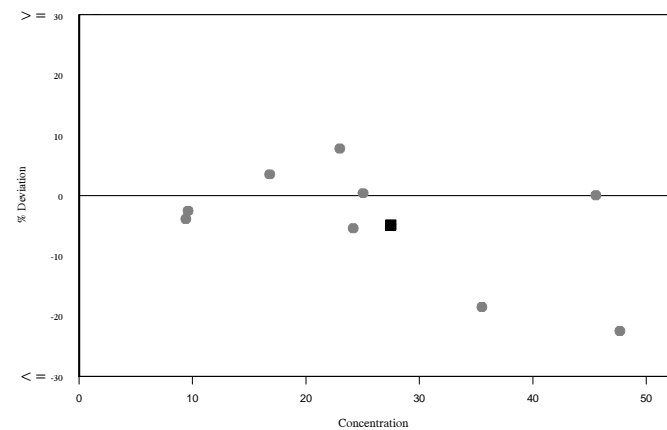
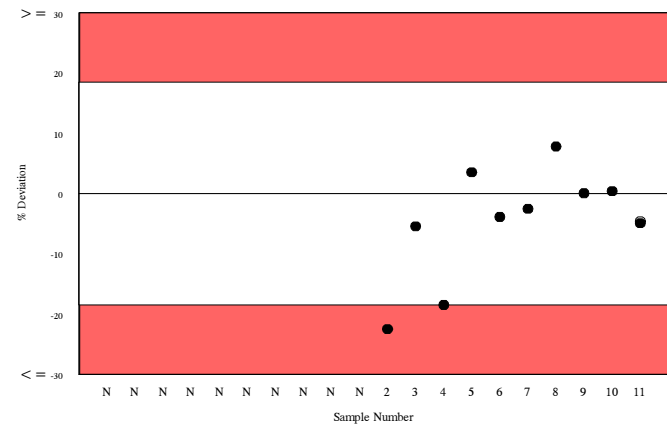
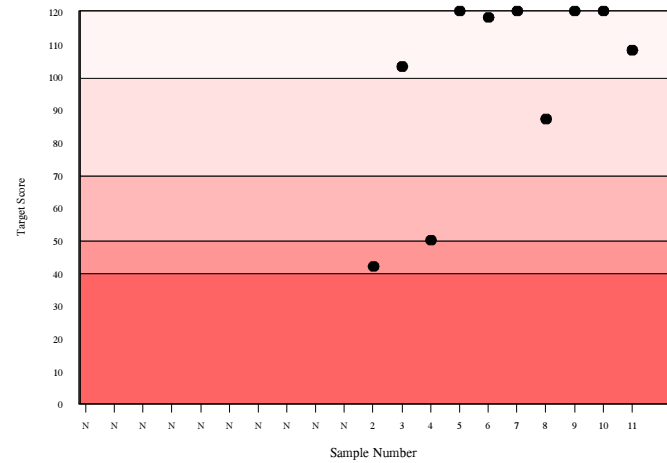
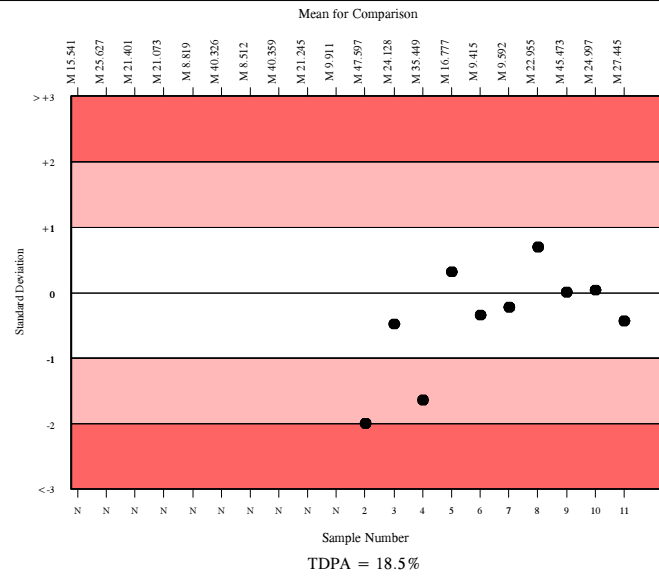
	N	Mean	CV%	U _m	SDPA	Exc.
All Methods	172	24.366	18.7	0.43	2.74	13
Siemens/DPC Immulite 2000/2500	60	27.445	11.4	0.51	3.09	4

▲ Your Result	26.100	SDI	-0.44
		RMSDI	-0.41
■ Mean for Comparison	27.445	TS	108
		RMTS	98
		%DEV	-4.9
		RM%DEV	-4.6

Acceptable limits derived from Biological Variation	N/A
Acceptable limits of performance for RIQAS	18.50%



Method	N	Mean	CV%	U _m
Siemens/DPC Immulite 2000/2500	60	27.445	11.4	0.51
Roche hCG + Beta	27	21.381	4.9	0.25
Beckman DXI Total BhCG (5th IS)	17	21.541	4.6	0.30
Siemens/DPC Immulite 1000	13	34.513	9.4	1.12
Abbott Architect I2000/8200	10	18.518	4.6	0.33
Beckman DxI 600 / 800	10	22.372	8.2	0.72
Beckman Access Total BhCG (5th IS)	7	21.689	4.3	0.44
Beckman Access	9	22.227	9.0	0.84
Siemens Centaur XP/XPT/Classic	5	17.331	2.3	0.23
Perkin Elmer DELFIA Xpress/AutoDELFIA	5	28.702	1.5	0.24
bioMerieux, Vidas/Mini Vidas	2	39.682	8.3	2.91
Roche hCG STAT(Intact)	2	28.622	6.0	1.52



Inhibin A, pg/ml

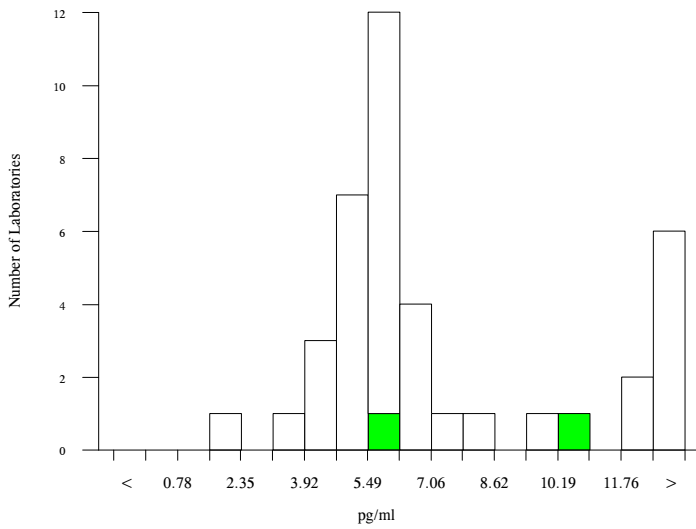
- All Methods
- Stat Fax Elisa Readers

	N	Mean	CV%	U _m	SDPA	Exc.
All Methods	34	6.190	34.3	0.45	0.74a	7
Stat Fax Elisa Readers	2	8.100	36.7	2.62	2.74a	0

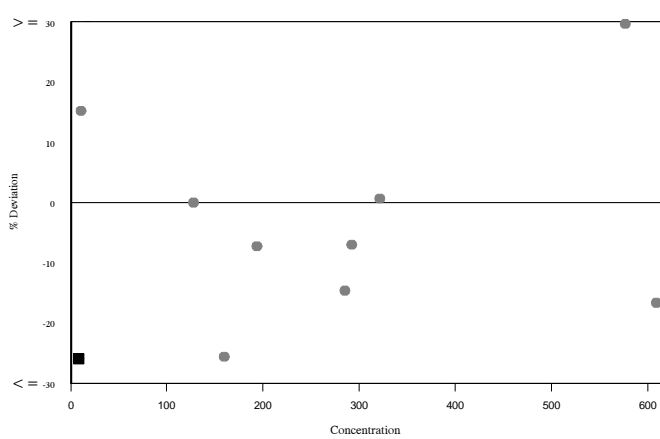
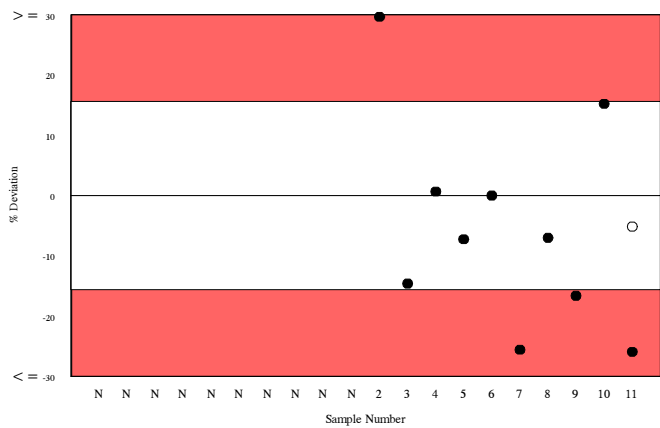
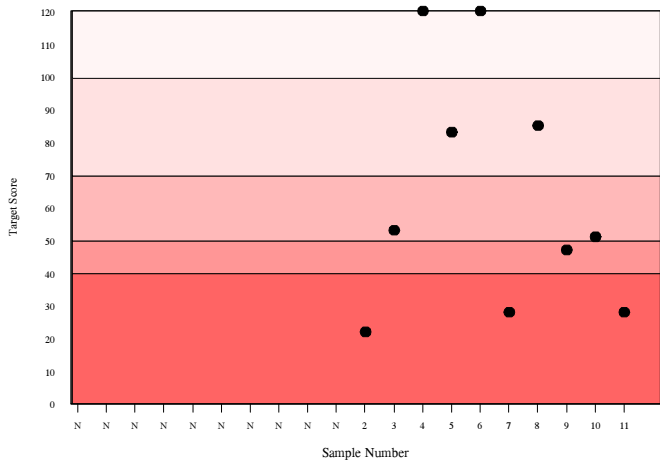
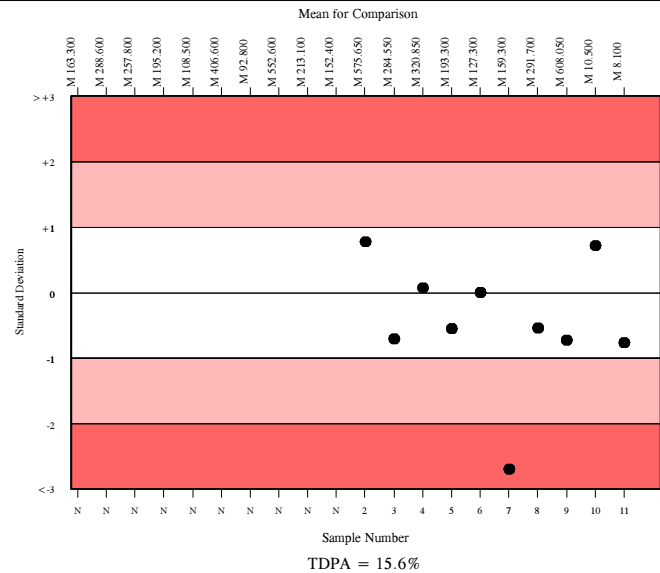
▲ Your Result	6.000	SDI	-0.77
		RMSDI	-0.44
■ Mean for Comparison	8.100	TS	28
		RMTS	63
		%DEV	-25.9
		RM%DEV	-5.1

The mean for comparison is not statistically significant

Acceptable limits derived from Biological Variation	N/A
Acceptable limits of performance for RIQAS	15.60%
TS & %DEV outside limits	



Method	N	Mean	CV%	U _m
Beckman DxI 600 / 800	12	5.761	9.9	0.21
Beckman Access	10	5.417	5.5	0.12
Beckman Inhibin A Active ELISA	8	26.313	62.6	7.28
ELISA	4	6.911	54.4	2.35
Perkin Elmer DELFIA Xpress/AutoDELFIA	2	9.500	41.5	3.49
Stat Fax Elisa Readers	2	8.100	36.7	2.62

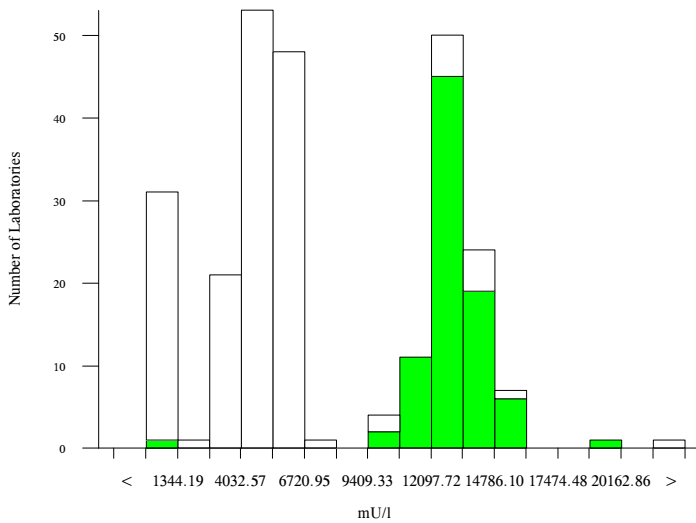


PAPP-A, mU/l

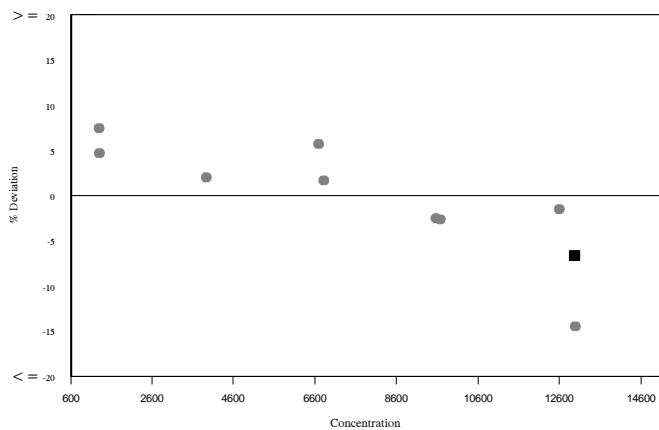
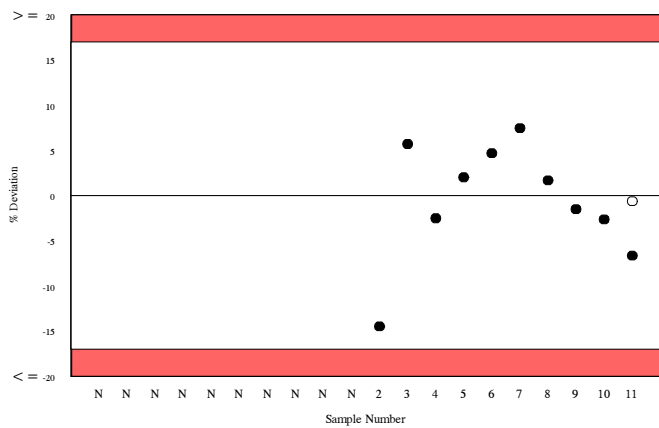
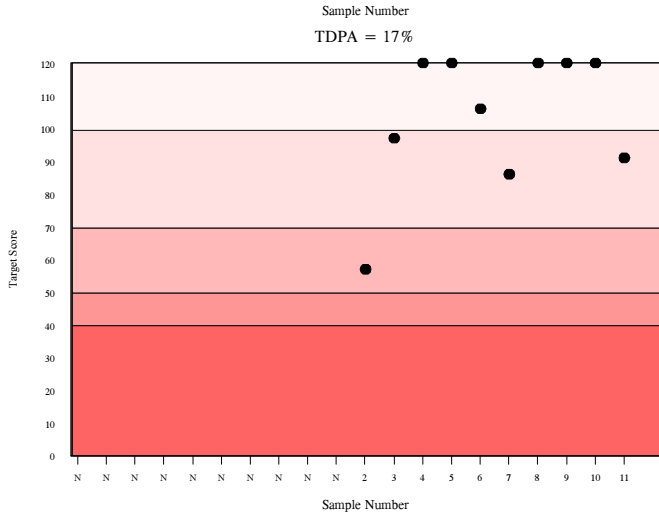
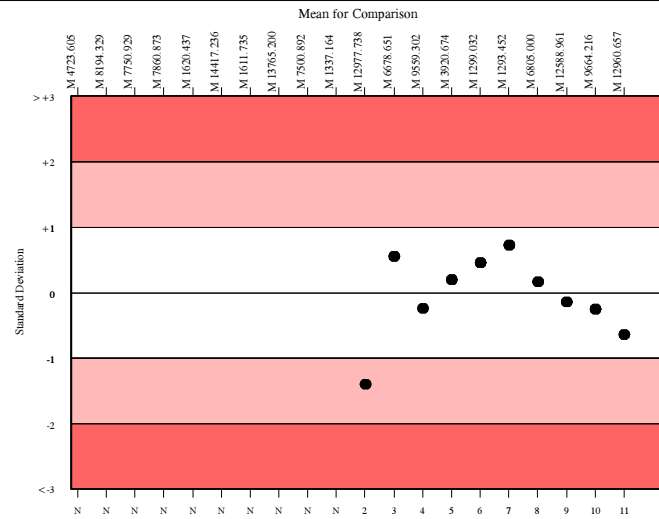
	N	Mean	CV%	U _m	SDPA	Exc.
□ All Methods	249	7522.561	62.0	369.20	860.60a	4
■ Siemens/DPC Immulite 2000/2500	76	12960.657	6.5	120.60	1339.50	9

▲ Your Result	12100.000	SDI RMSDI	-0.64 -0.06
■ Mean for Comparison	12960.657	TS RMTS	91 103
		%DEV RM%DEV	-6.6 -0.6

Acceptable limits derived from Biological Variation	15.1%
Acceptable limits of performance for RIQAS	17.00%



Method	N	Mean	CV%	U _m
Siemens/DPC Immulite 2000/2500	76	12960.657	6.5	120.60
Perkin Elmer DELFIA Xpress/AutoDELFIA	36	4058.815	5.0	42.10
Roche Cobas 4000/e411	32	5693.968	8.0	100.50
Roche Cobas 6000/8000	30	5803.466	7.5	99.60
Beckman DxI 600 / 800	17	384.985	6.2	7.20
Brahms, Krytor	16	4280.375	3.2	42.20
Siemens/DPC Immulite 1000	9	13305.555	4.5	248.30
Beckman Access	8	415.040	5.4	9.90



Unconjugated estriol, ng/ml

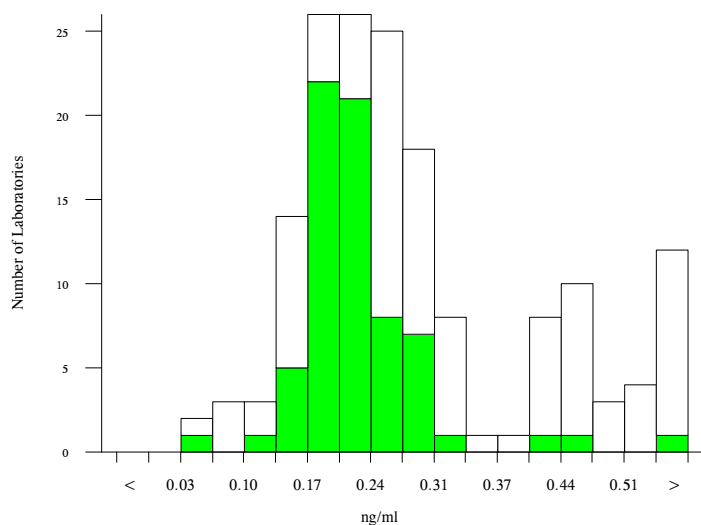
□ All Methods

■ DPC, Immulite 2000/2500

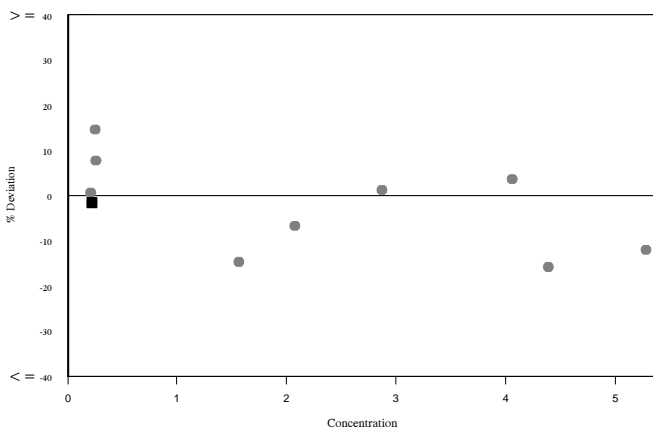
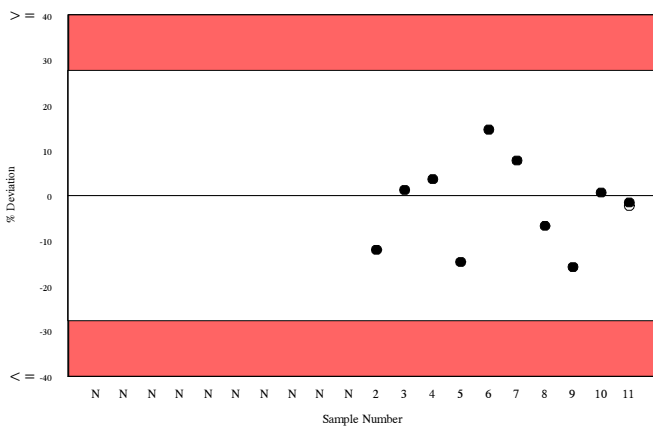
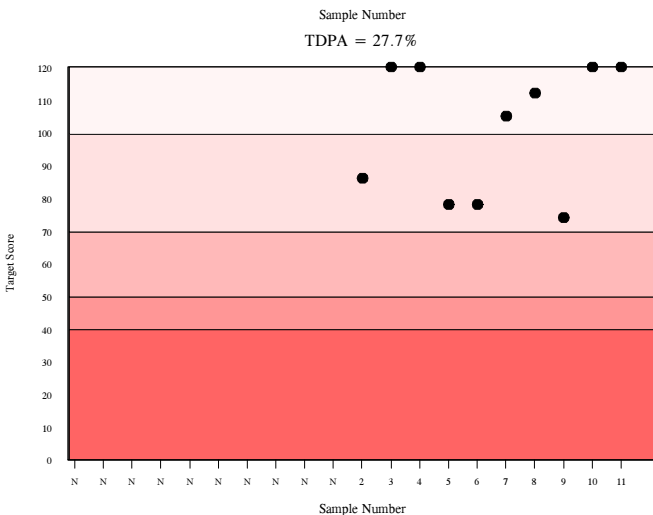
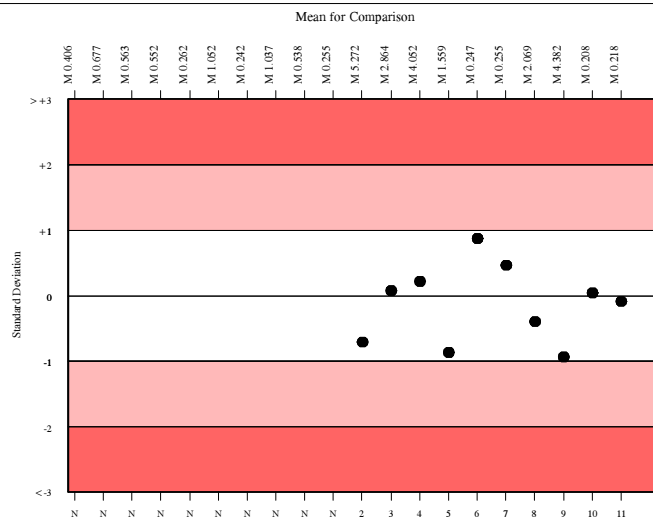
N	Mean	CV%	U _m	SDPA	Exc.
146	0.259	37.7	0.01	0.04	18
62	0.218	15.5	0.01	0.04	7

▲ Your Result	0.215	SDI RMSDI	-0.09 -0.14
■ Mean for Comparison	0.218	TS RMTS	120 101
		%DEV RM%DEV	-1.5 -2.3

Acceptable limits derived from Biological Variation	N/A
Acceptable limits of performance for RIQAS	27.70%



Method	N	Mean	CV%	U _m
DPC, Immulite 2000/2500	62	0.218	15.5	0.01
Beckman Dxl 600 / 800	26	0.279	11.1	0.01
Perkin Elmer DELFIA Xpress/AutoDELFIA	22	0.472	8.8	0.01
Beckman Access	13	0.245	24.6	0.02
DPC, Immulite 1000	10	0.167	14.8	0.01
Brahms, Kryptor	4	0.079	26.4	0.01
IBL ELISA	3	0.720	26.6	0.14
Demeditec ELISA	2	1.000	0.0	0.00
DRG Elisa	2	0.560	10.1	0.05



Analyte	Mean for Comparison	Your Result	SDI	RMSDI	%DEV	RM%DEV	TS	RMTS	Performance
AFP	14.119	13.500	-0.60	-0.39	-4.4	-2.8	94	89	
hCG, free beta	48.519	43.800	-0.89	-0.49	-9.7	-5.3	77	97	
hCG, total	27.445	26.100	-0.44	-0.41	-4.9	-4.6	108	98	
Inhibin A	8.100	6.000	-0.77	-0.44	<u>-25.9</u>	-5.1	<u>28</u>	63	
PAPP-A	12960.657	12100.000	-0.64	-0.06	-6.6	-0.6	91	103	
Unconjugated estriol	0.218	0.215	-0.09	-0.14	-1.5	-2.3	120	101	

ORMSDI -0.32

ORM%DEV -3.5

ORMTS 92

END OF REPORT

