

Dena Laboratory

MATERNAL SCREENING

CYCLE 9 SAMPLE 10

Explanation of codes used in this report

R - Results removed due to reconstitution error
N - No result returned
C - Result corrected

Authorised by: Stephen Doherty, RIQAS Manager

Issue No: 1

Issue Date: 18/10/2017

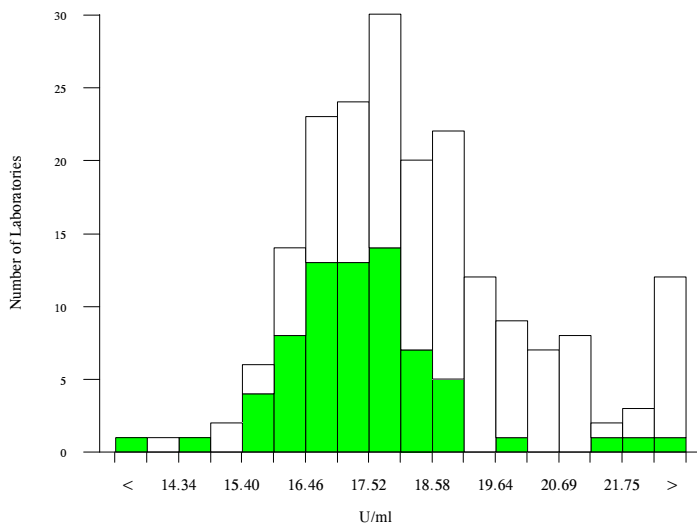
Randox Laboratories Limited
55 Diamond Road
CRUMLIN BT29 4QY
Tel: +44 (0)28 9445 4399
Fax: +44 (0)28 9445 4398
Email: mail@riqas.com

AFP, U/ml

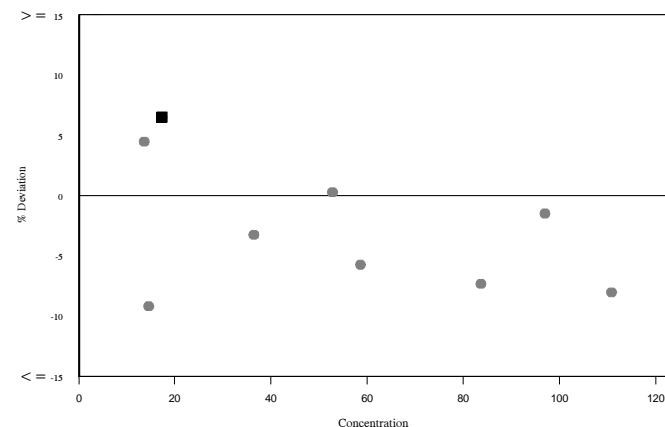
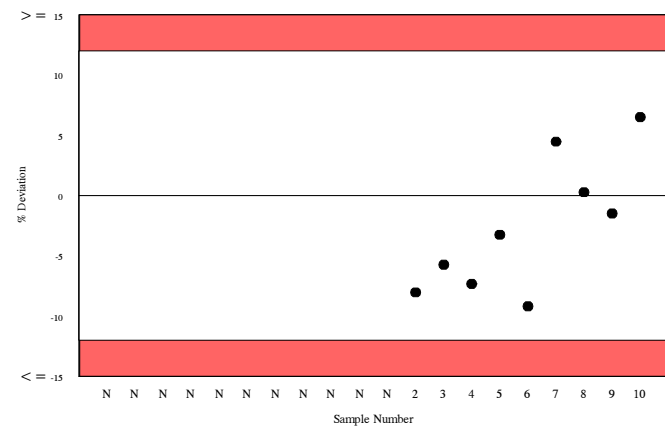
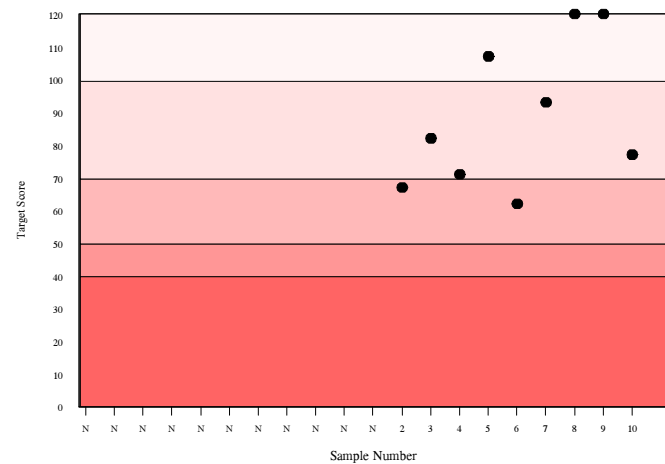
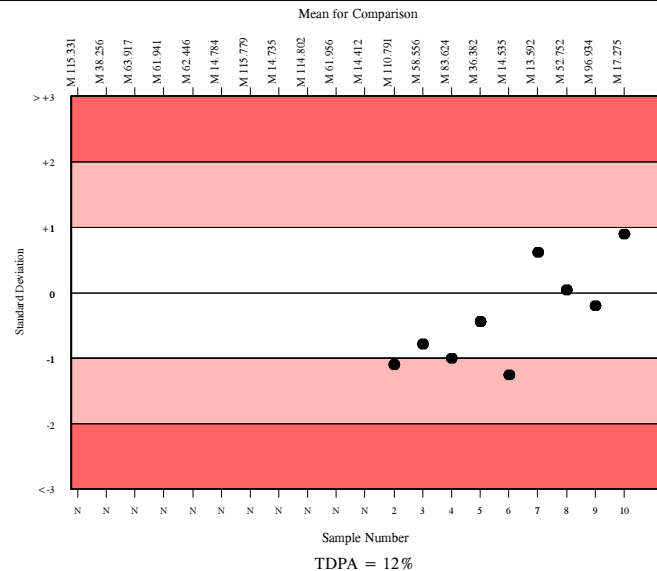
	N	Mean	CV%	U _m	SDPA	Exc.
<input type="checkbox"/> All Methods <input checked="" type="checkbox"/> Siemens/DPC Immulite 2000/2500	179	18.051	7.8	0.13	1.32	18
	64	17.275	5.0	0.13	1.26	6

▲ Your Result	18.400	SDI	0.89
		RMSDI	Too Few
■ Mean for Comparison	17.275	TS	77
		RMTS	Too Few
		%DEV	6.5
		RM%DEV	Too Few

Acceptable limits derived from Biological Variation	21.9%
Acceptable limits of performance for RIQAS	12.00%



Method	N	Mean	CV%	U _m
Siemens/DPC Immulite 2000/2500	64	17.275	5.0	0.13
Beckman Dxi 600 / 800	24	17.425	9.1	0.40
Perkin Elmer DELFIA Xpress/AutoDELFIA	23	18.761	5.3	0.26
Roche Cobas 6000/8000	14	19.944	4.0	0.26
Beckman Access/LXi725	12	18.652	3.6	0.24
Abbott Architect	10	17.620	3.9	0.27
Siemens/DPC Immulite 1000	7	17.342	3.9	0.32
Roche Cobas 4000/e411	10	21.057	7.5	0.62
Siemens Centaur XP/XPT/Classic	8	20.516	11.0	1.00
Brahms Kryptor	3	16.478	3.0	0.36
Roche Elecsys	2	17.180	17.6	2.67

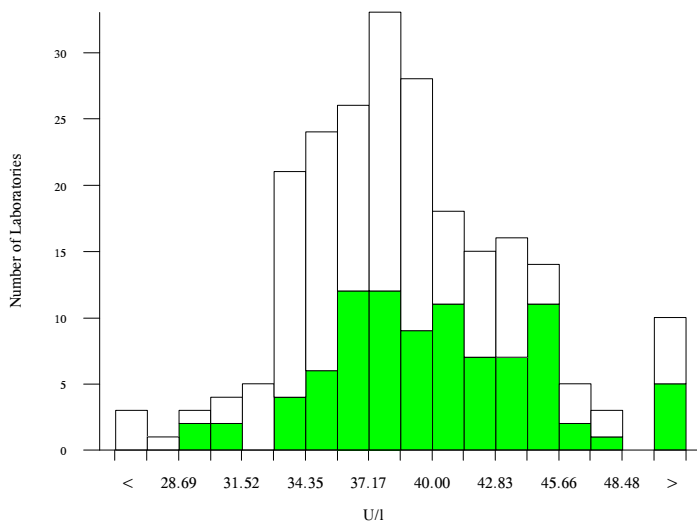


hCG, free beta, U/I

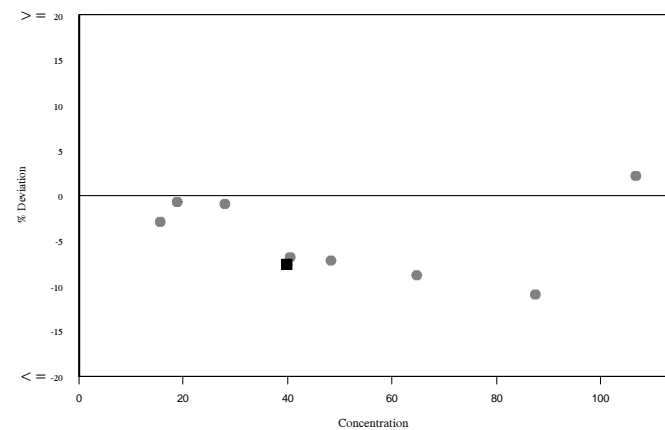
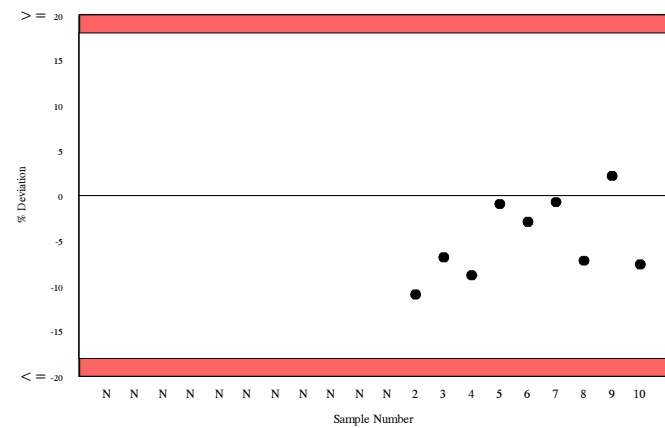
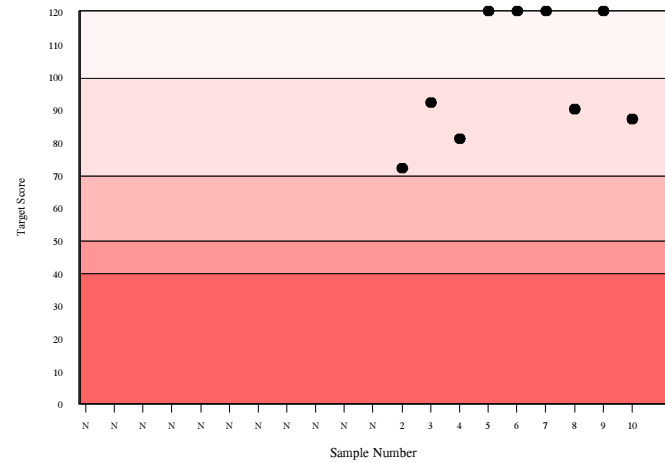
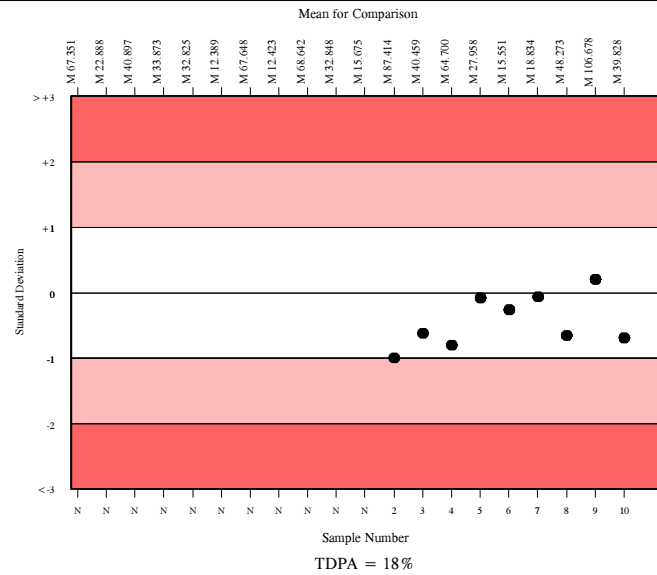
	N	Mean	CV%	U _m	SDPA	Exc.
All Methods	210	38.594	9.8	0.33	4.22	19
Siemens/DPC Immulite 2000/2500	83	39.828	9.2	0.50	4.36	8

▲ Your Result	36.800	SDI RMSDI	-0.69 Too Few
■ Mean for Comparison	39.828	TS RMTS	87 Too Few
		%DEV RM%DEV	-7.6 Too Few

Acceptable limits derived from Biological Variation	N/A
Acceptable limits of performance for RIQAS	18.00%



Method	N	Mean	CV%	U _m
Siemens/DPC Immulite 2000/2500	83	39.828	9.2	0.50
Perkin Elmer DELFIA Xpress/AutoDELFIA	40	40.376	7.6	0.60
Roche Cobas 4000/e411	27	36.016	6.7	0.58
Roche Cobas 6000/8000	24	34.152	5.6	0.49
Brahms, Krytor	13	39.305	2.9	0.39
Siemens/DPC Immulite 1000	11	37.702	8.1	1.15

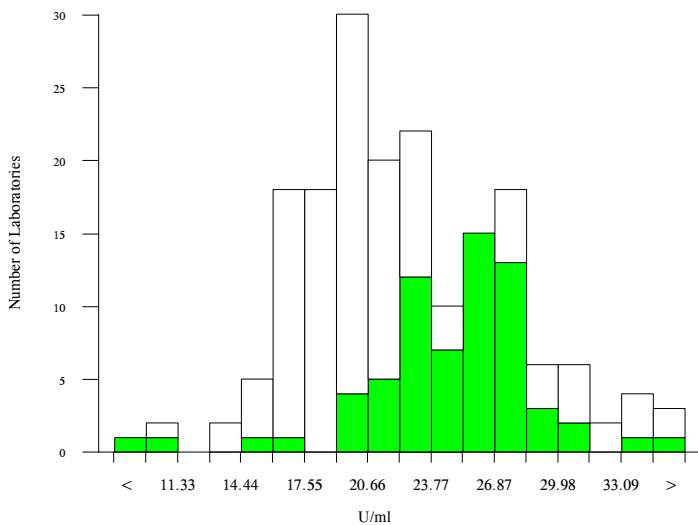


hCG, total, U/ml

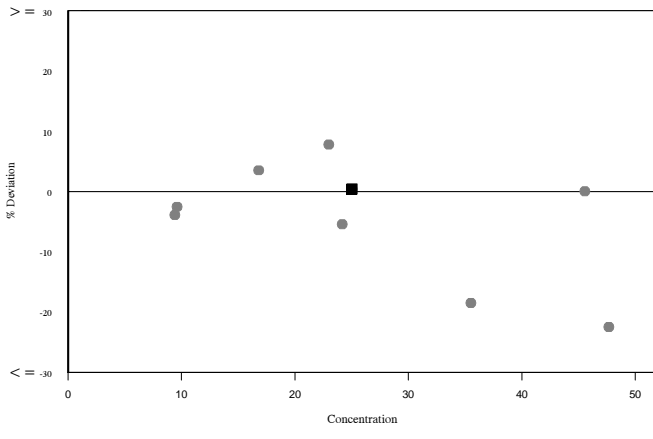
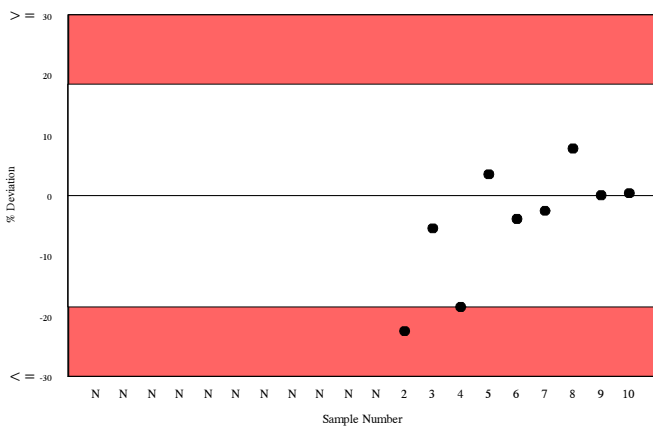
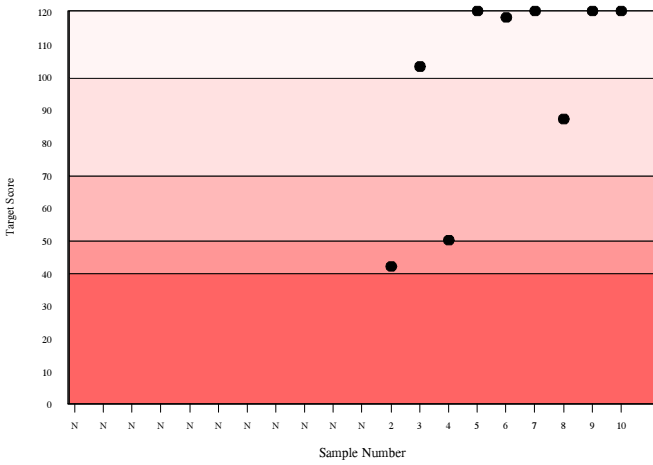
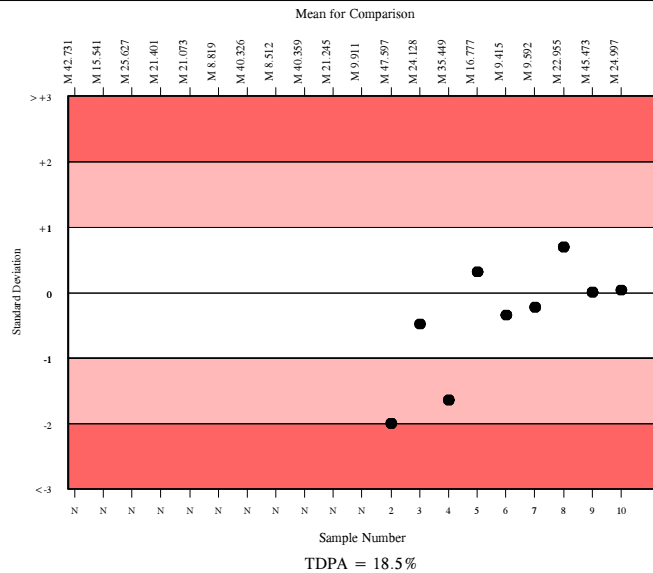
	N	Mean	CV%	U _m	SDPA	Exc.
All Methods	168	22.217	18.7	0.40	2.50	14
Siemens/DPC Immulite 2000/2500	60	24.997	10.8	0.44	2.81	7

▲ Your Result	25.100	SDI	0.04
		RMSDI	Too Few
■ Mean for Comparison	24.997	TS	120
		RMTS	Too Few
		%DEV	0.4
		RM%DEV	Too Few

Acceptable limits derived from Biological Variation	N/A
Acceptable limits of performance for RIQAS	18.50%



Method	N	Mean	CV%	U _m
Siemens/DPC Immulite 2000/2500	60	24.997	10.8	0.44
Roche hCG + Beta	26	18.526	6.3	0.29
Beckman DXI Total BhCG (5th IS)	17	21.019	4.9	0.31
Siemens/DPC Immulite 1000	10	29.358	16.7	1.94
Abbott Architect I2000/8200	8	17.239	2.7	0.20
Beckman DxI 600 / 800	10	21.450	8.3	0.70
Beckman Access	8	20.149	3.3	0.29
Beckman Access Total BhCG (5th IS)	7	21.243	6.4	0.64
Siemens Centaur XP/XPT/Classic	7	15.638	6.4	0.47
Perkin Elmer DELFIA Xpress/AutoDELFIA	7	30.137	6.8	0.97
bioMerieux, Vidas/Mini Vidas	3	31.062	11.2	2.52
Roche hCG STAT(intact)	2	23.161	7.6	1.56



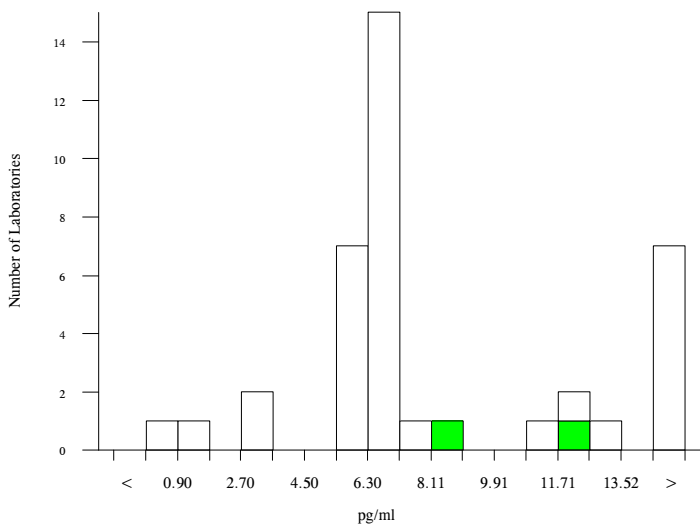
Inhibin A, pg/ml

	N	Mean	CV%	U _m	SDPA	Exc.
All Methods	31	6.942	35.9	0.56	0.86a	8
Stat Fax Elisa Readers	2	10.500	21.5	2.00	2.23a	0

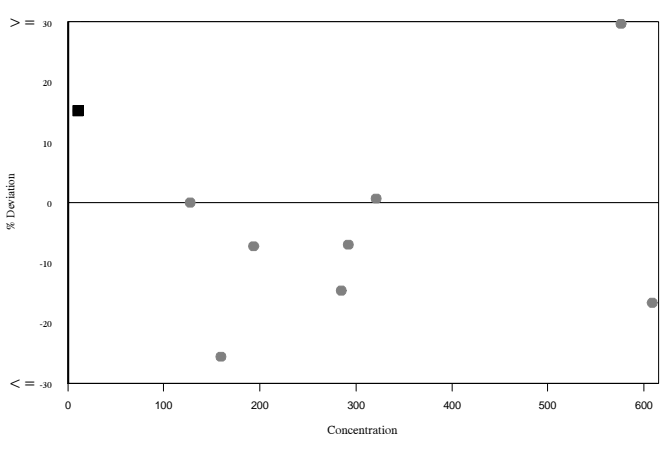
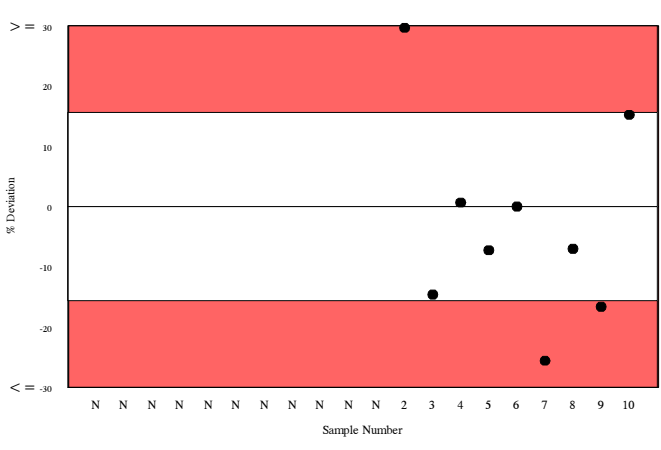
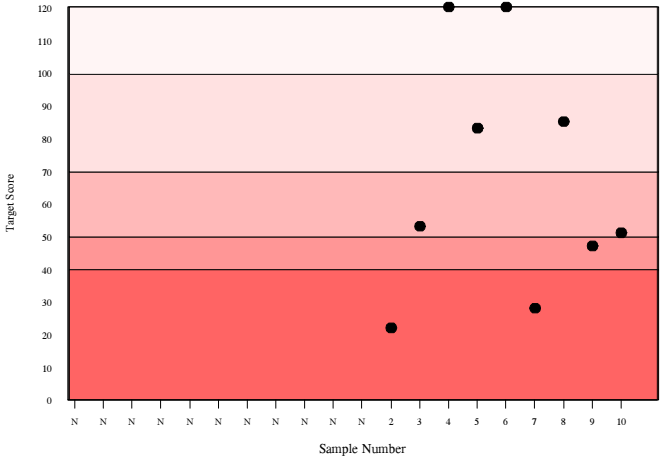
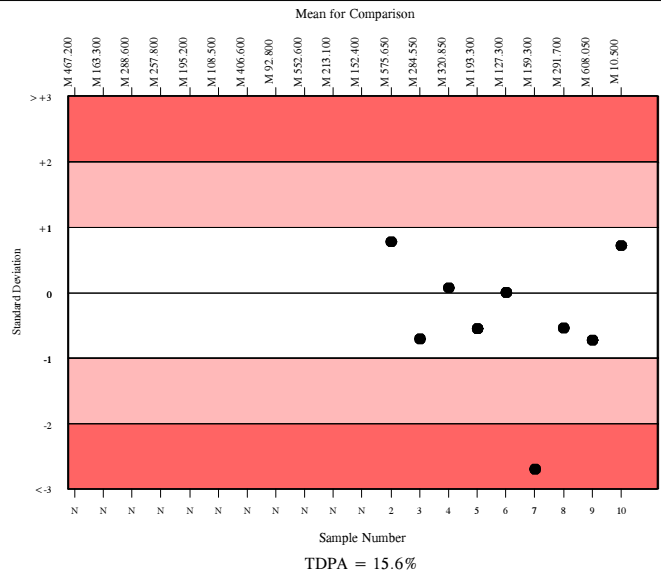
▲ Your Result	12.100	SDI RMSDI	0.72 Too Few
■ Mean for Comparison	10.500	TS RMTS	51 Too Few
		%DEV RM%DEV	15.2 Too Few

The mean for comparison is not statistically significant

Acceptable limits derived from Biological Variation	N/A
Acceptable limits of performance for RIQAS	15.60%



Method	N	Mean	CV%	U _m
Active Inhibin A Elisa	9	11.469	88.7	4.24
Beckman Dxl 600 / 800	12	6.453	7.3	0.17
Beckman Access	9	6.444	7.4	0.20
Perkin Elmer DELFIA Xpress/AutoDELFIA	3	282.152	31.2	63.47
Stat Fax Elisa Readers	2	10.500	21.5	2.00

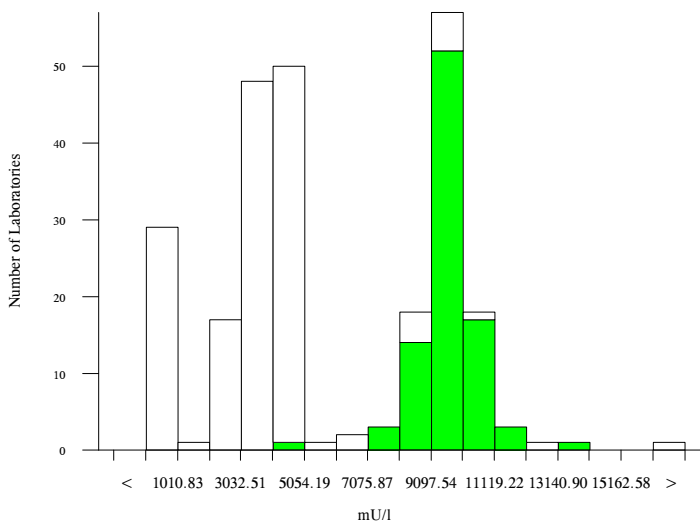


PAPP-A, mU/l

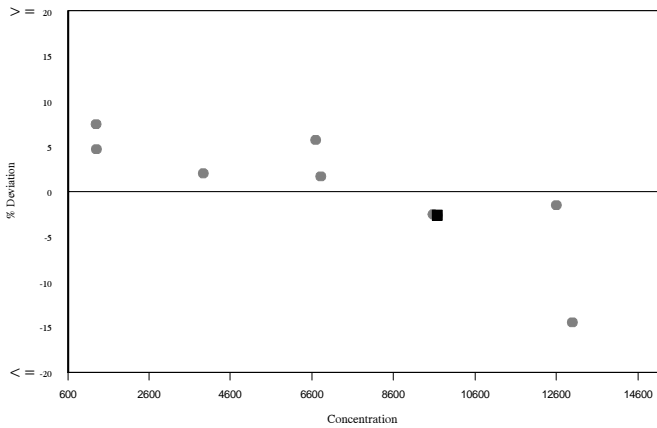
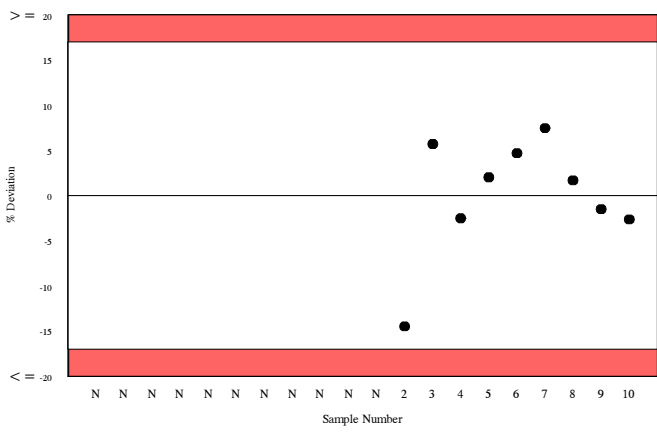
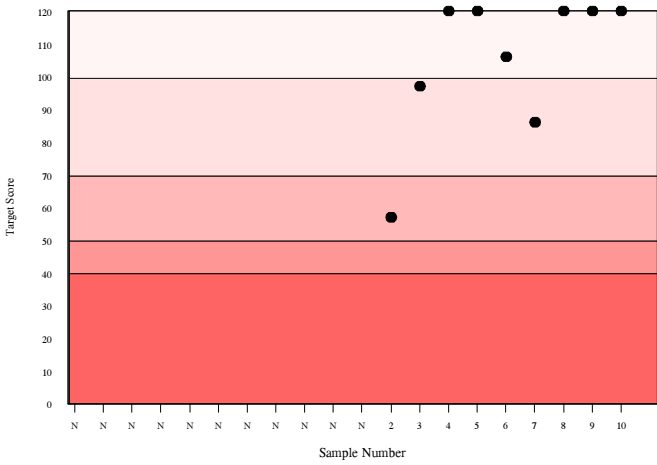
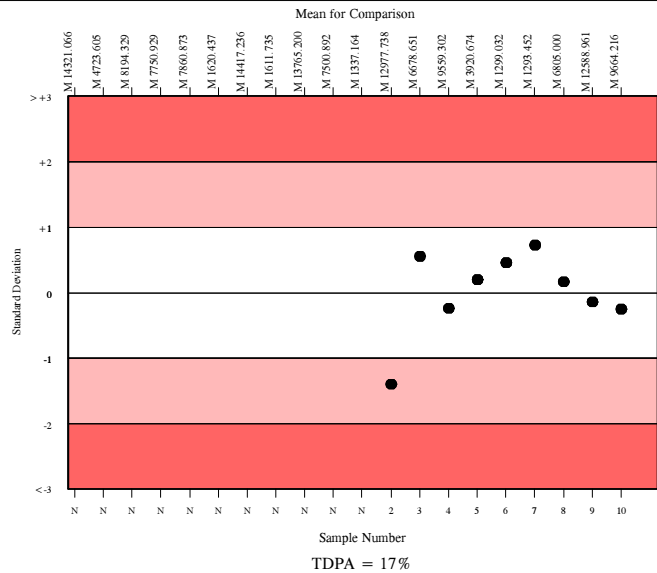
	N	Mean	CV%	U _m	SDPA	Exc.
<input type="checkbox"/> All Methods	245	5829.719	59.1	275.30	662.40a	6
<input checked="" type="checkbox"/> Siemens/DPC Immulite 2000/2500	83	9664.216	6.7	89.10	998.80	9

<input checked="" type="checkbox"/> Your Result	9410.000	SDI	-0.25
		RMSDI	Too Few
<input checked="" type="checkbox"/> Mean for Comparison	9664.216	TS	120
		RMTS	Too Few
		%DEV	-2.6
		RM%DEV	Too Few

Acceptable limits derived from Biological Variation	15.1%
Acceptable limits of performance for RIQAS	17.00%



Method	N	Mean	CV%	U _m
Siemens/DPC Immulite 2000/2500	83	9664.216	6.7	89.10
Perkin Elmer DELFIA Xpress/AutoDELFIA	36	3102.760	7.8	50.60
Roche Cobas 4000/e411	29	4406.482	6.2	63.80
Roche Cobas 6000/8000	28	4277.321	6.4	64.60
Beckman DxI 600 / 800	19	292.035	9.8	8.20
Brahms, Krytor	16	3101.500	4.0	38.60
Siemens/DPC Immulite 1000	8	9138.750	4.6	184.10
Beckman Access	6	293.865	3.2	4.70

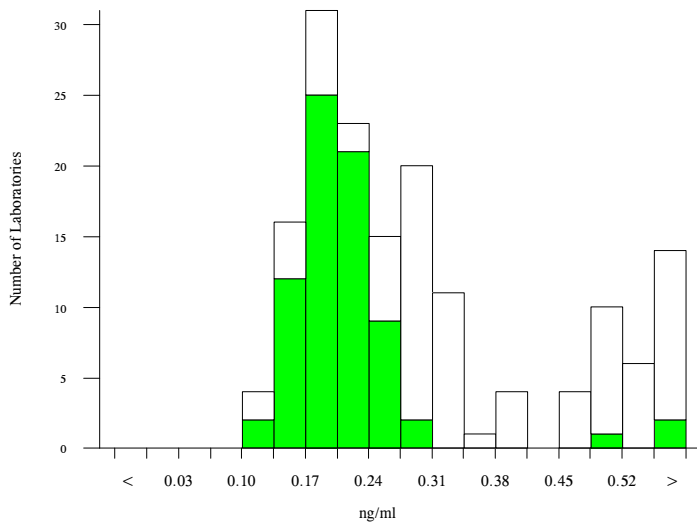


Unconjugated estriol, ng/ml

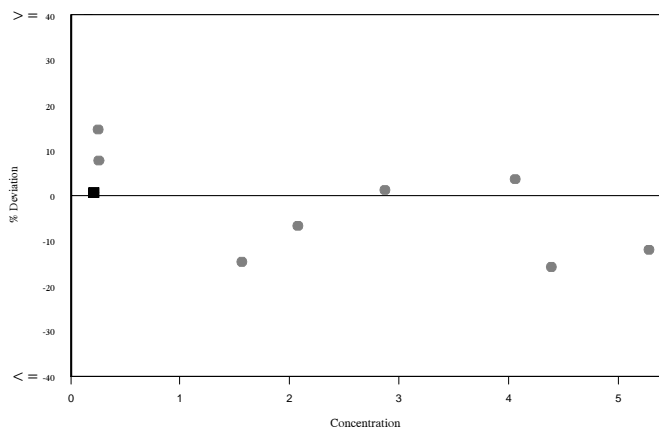
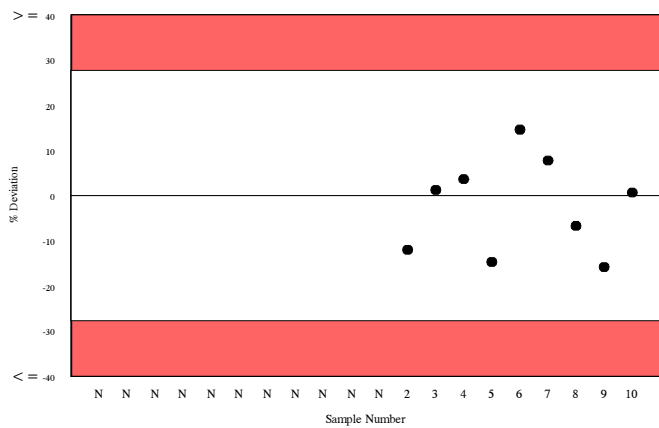
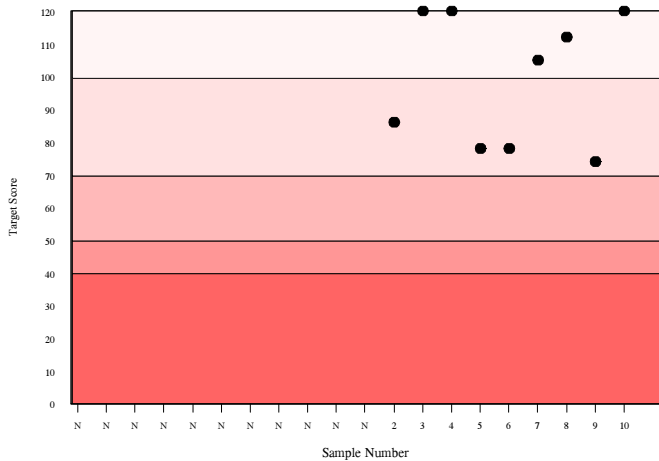
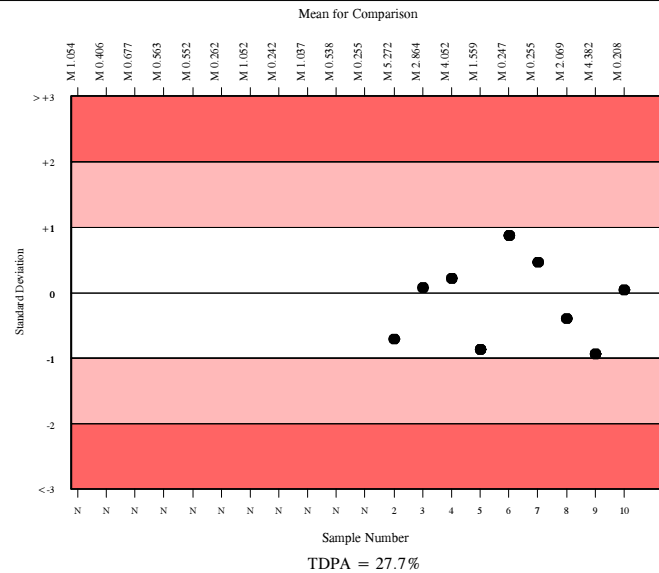
	N	Mean	CV%	U _m	SDPA	Exc.
All Methods	138	0.265	37.2	0.01	0.04	21
DPC, Immulite 2000/2500	69	0.208	16.0	0.00	0.03	5

▲ Your Result	0.209	SDI	0.04
		RMSDI	Too Few
■ Mean for Comparison	0.208	TS	120
		RMTS	Too Few
		%DEV	0.7
		RM%DEV	Too Few

Acceptable limits derived from Biological Variation	N/A
Acceptable limits of performance for RIQAS	27.70%



Method	N	Mean	CV%	U _m
DPC, Immulite 2000/2500	69	0.208	16.0	0.00
Beckman Dxl 600 / 800	22	0.296	7.7	0.01
Perkin Elmer DELFIA Xpress/AutoDELFIA	21	0.541	8.8	0.01
Beckman Access	11	0.319	6.0	0.01
DPC, Immulite 1000	9	0.191	18.8	0.01
Brahms, Kryptor	3	0.135	13.1	0.01
Demeditec ELISA	2	1.000	0.0	0.00
DRG Elisa	1	0.520	0.0	0.00
IBL ELISA	2	0.945	8.2	0.07



Analyte	Mean for Comparison	Your Result	SDI	RMSDI	%DEV	RM%DEV	TS	RMTS	Performance
AFP	17.275	18.400	0.89	Too Few	6.5	Too Few	77	Too Few	
hCG, free beta	39.828	36.800	-0.69	Too Few	-7.6	Too Few	87	Too Few	
hCG, total	24.997	25.100	0.04	Too Few	0.4	Too Few	120	Too Few	
Inhibin A	10.500	12.100	0.72	Too Few	15.2	Too Few	51	Too Few	
PAPP-A	9664.216	9410.000	-0.25	Too Few	-2.6	Too Few	120	Too Few	
Unconjugated estriol	0.208	0.209	0.04	Too Few	0.7	Too Few	120	Too Few	

ORMSDI N/A

ORM%DEV N/A

ORMTS N/A

END OF REPORT

