

Dena Laboratory

MATERNAL SCREENING

CYCLE 9 SAMPLE 7

Explanation of codes used in this report

R - Results removed due to reconstitution error
N - No result returned
C - Result corrected

Authorised by: Stephen Doherty, RIQAS Manager

Issue No: 2

Issue Date: 18/10/2017

Report re-issued to include authorised late or corrected results

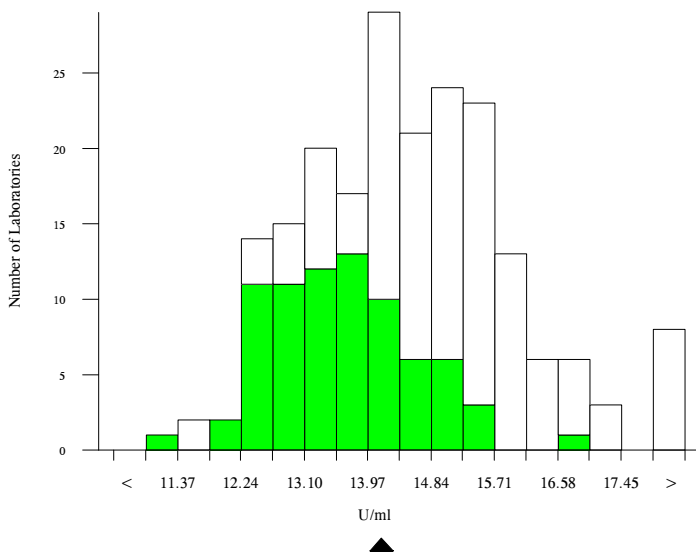
Randox Laboratories Limited
55 Diamond Road
CRUMLIN BT29 4QY
Tel: +44 (0)28 9445 4399
Fax: +44 (0)28 9445 4398
Email: mail@riqas.com

AFP, U/ml

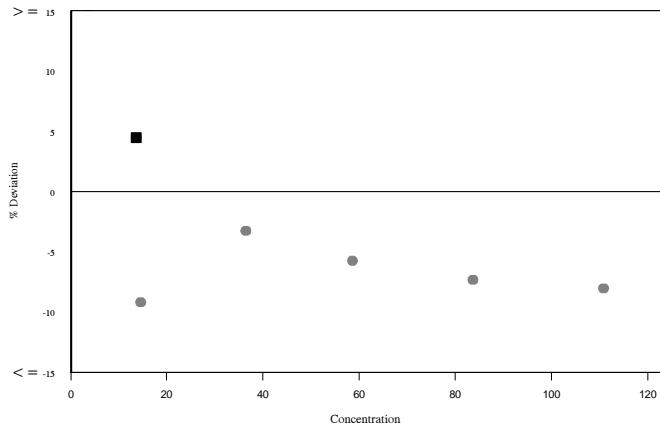
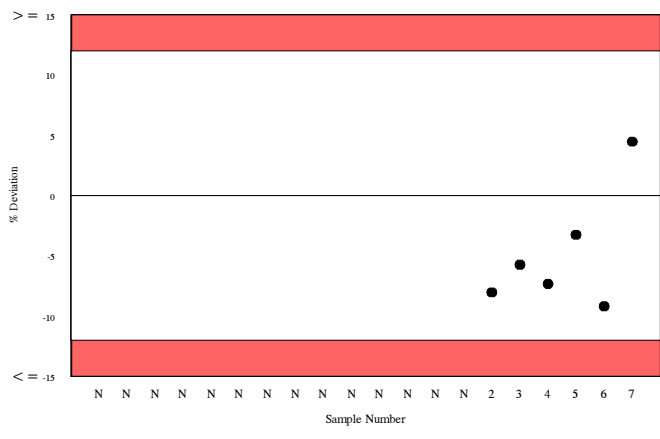
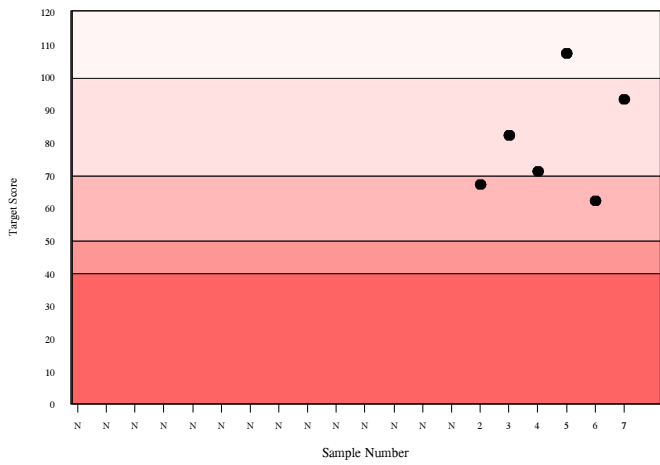
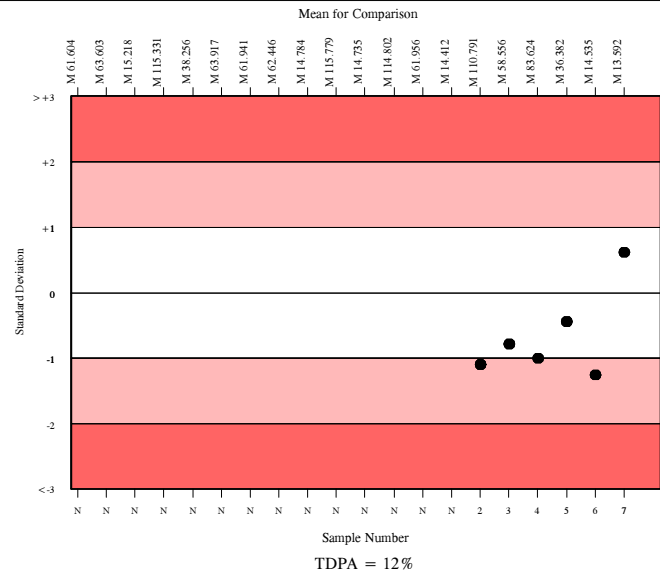
	N	Mean	CV%	U _m	SDPA	Exc.
All Methods	184	14.412	8.0	0.11	1.05	20
Siemens/DPC Immulite 2000/2500	67	13.592	5.7	0.12	0.99	9

▲ Your Result	14.200	SDI	0.61
		RMSDI	Too Few
■ Mean for Comparison	13.592	TS	93
		RMTS	Too Few
		%DEV	4.5
		RM%DEV	Too Few

Acceptable limits derived from Biological Variation	21.9%
Acceptable limits of performance for RIQAS	12.00%



Method	N	Mean	CV%	U _m
Siemens/DPC Immulite 2000/2500	67	13.592	5.7	0.12
Perkin Elmer DELFIA Xpress/AutoDELFIA	26	15.204	3.8	0.14
Beckman Dxi 600 / 800	24	14.304	6.9	0.25
Roche Cobas 6000/8000	16	15.807	4.9	0.24
Siemens/DPC Immulite 1000	11	14.070	5.8	0.31
Roche Cobas 4000/e411	7	15.348	4.6	0.34
Abbott Architect	10	14.436	3.4	0.20
Beckman Access/LXi725	9	15.202	12.3	0.78
Siemens Centaur XP/XPT/Classic	7	17.070	7.4	0.60
Brahms Kryptor	2	13.214	3.8	0.45
Roche Elecsys	1	12.640	0.0	0.00

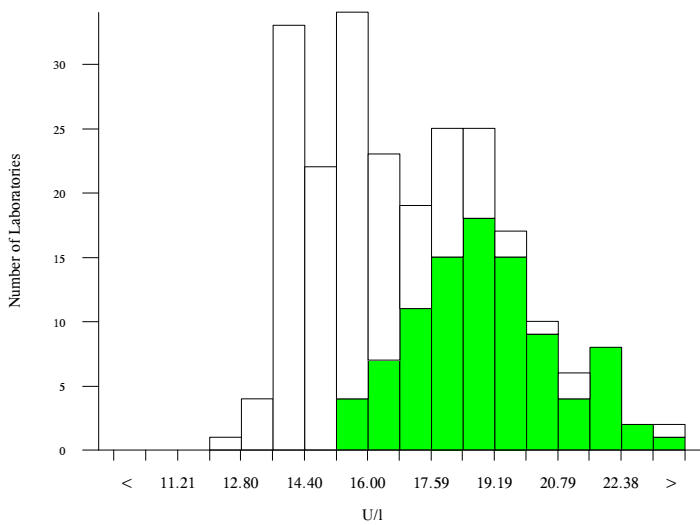


hCG, free beta, U/I

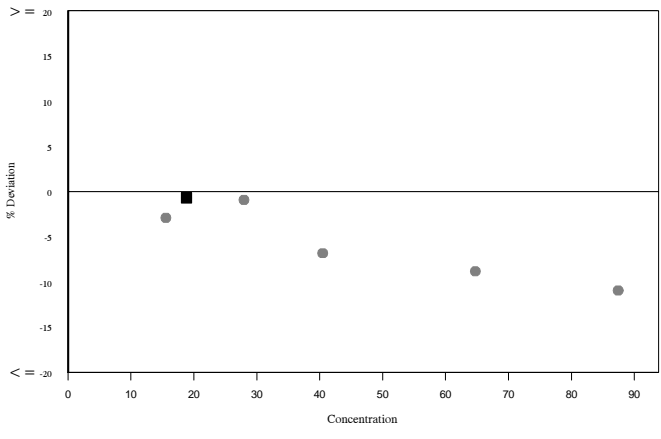
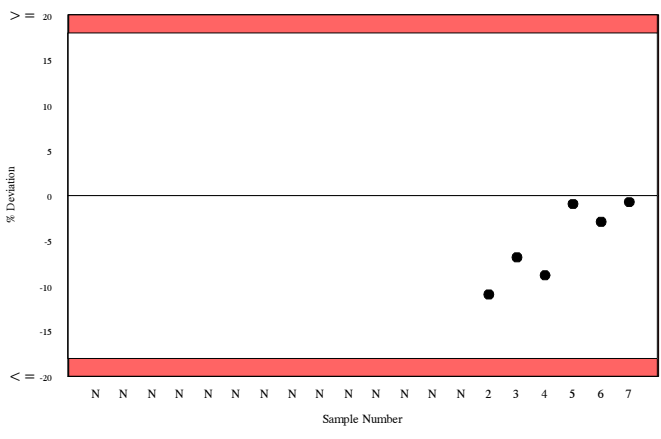
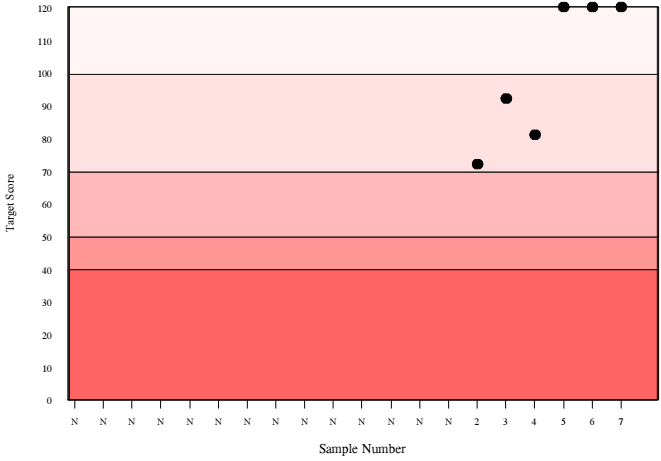
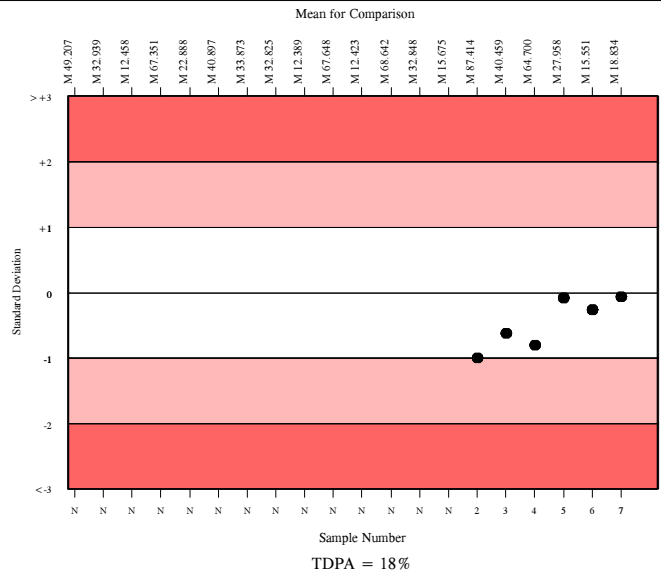
	N	Mean	CV%	U _m	SDPA	Exc.
All Methods	212	16.799	12.7	0.18	1.84	19
Siemens/DPC Immulite 2000/2500	87	18.834	8.7	0.22	2.06	7

▲ Your Result	18.700	SDI RMSDI	-0.07 Too Few
■ Mean for Comparison	18.834	TS RMTS	120 Too Few
		%DEV RM%DEV	-0.7 Too Few

Acceptable limits derived from Biological Variation	N/A
Acceptable limits of performance for RIQAS	18.00%



Method	N	Mean	CV%	U _m
Siemens/DPC Immulite 2000/2500	87	18.834	8.7	0.22
Perkin Elmer DELFIA Xpress/AutoDELFIA	35	15.724	5.2	0.17
Roche Cobas 6000/8000	29	14.343	3.1	0.10
Roche Cobas 4000/e411	24	14.629	4.6	0.17
Siemens/DPC Immulite 1000	13	16.119	8.0	0.45
Brahms, Krytor	12	18.170	2.8	0.18

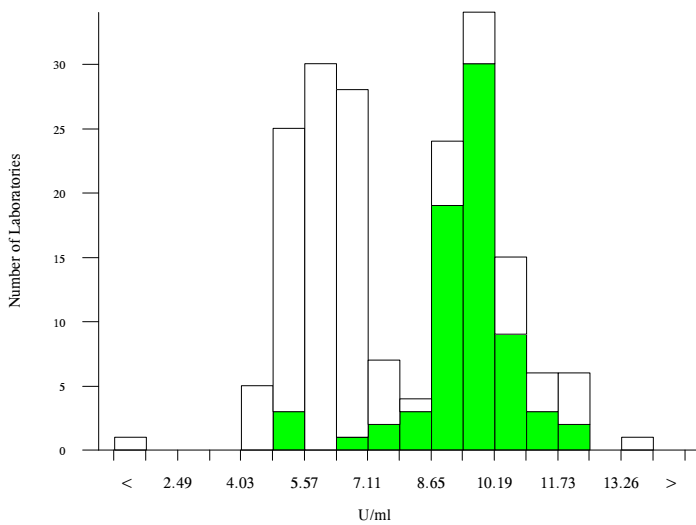


hCG, total, U/ml

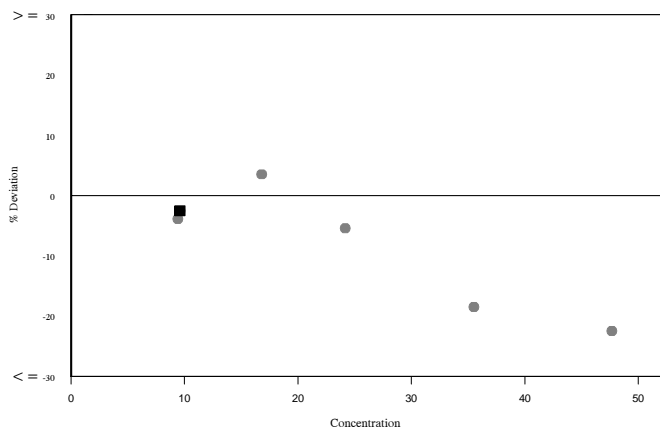
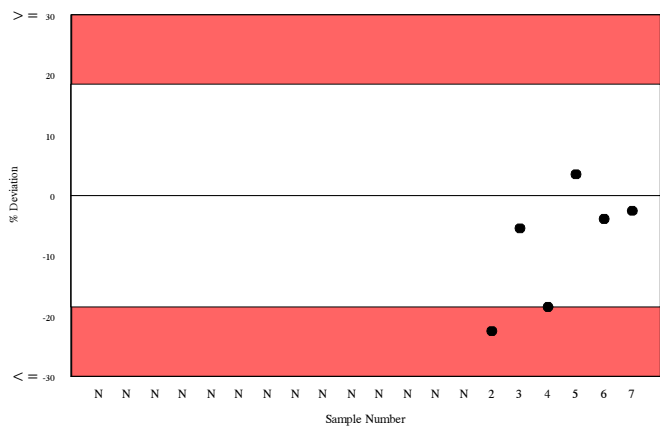
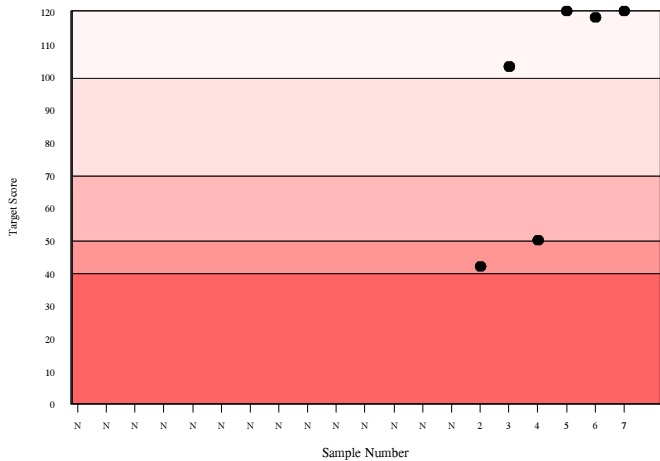
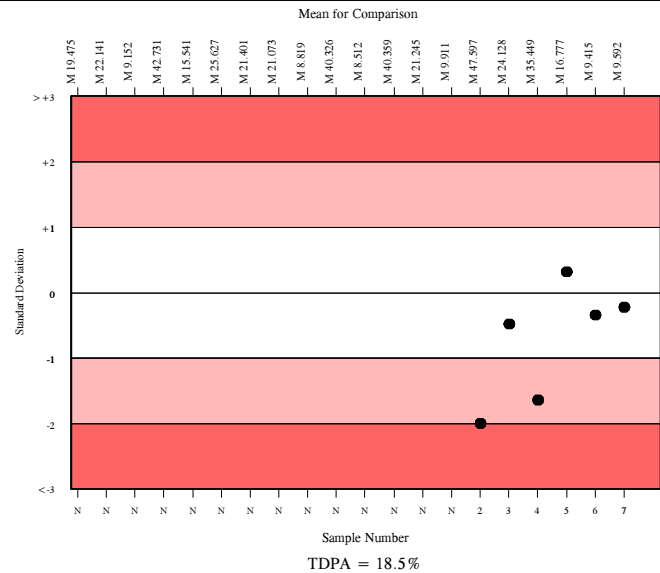
	N	Mean	CV%	U _m	SDPA	Exc.
All Methods	174	7.883	26.0	0.19	0.89	12
Siemens/DPC Immulite 2000/2500	60	9.592	6.3	0.10	1.08	12

▲ Your Result	9.350	SDI RMSDI	-0.22 Too Few
■ Mean for Comparison	9.592	TS RMTS	120 Too Few
		%DEV RM%DEV	-2.5 Too Few

Acceptable limits derived from Biological Variation	N/A
Acceptable limits of performance for RIQAS	18.50%



Method	N	Mean	CV%	U _m
Siemens/DPC Immulite 2000/2500	60	9.592	6.3	0.10
Roche hCG + Beta	27	6.255	8.9	0.13
Beckman DXI Total BhCG (5th IS)	15	6.204	4.4	0.09
Siemens/DPC Immulite 1000	12	11.314	9.8	0.40
Abbott Architect I2000/8200	8	5.464	2.3	0.06
Beckman DxI 600 / 800	8	6.408	6.9	0.20
Perkin Elmer DELFIA Xpress/AutoDELFIA	5	9.353	3.0	0.16
Beckman Access	7	6.273	12.5	0.37
Siemens Centaur XP/XPT/Classic	5	4.694	3.0	0.08
Beckman Access Total BhCG (5th IS)	5	6.278	7.5	0.26
bioMerieux, Vidas/Mini Vidas	2	11.311	4.8	0.48
Roche hCG STAT(intact)	2	9.229	8.8	0.72



Inhibin A, pg/ml

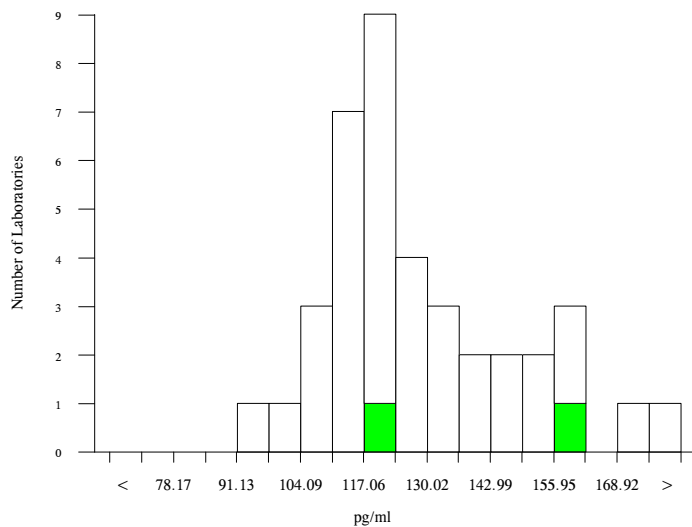
	N	Mean	CV%	U _m	SDPA	Exc.
All Methods	29	123.546	14.0	4.01	12.39a	10
Stat Fax Elisa Readers	1	159.300	0.0	0.00	N/A	1

- All Methods
- Stat Fax Elisa Readers

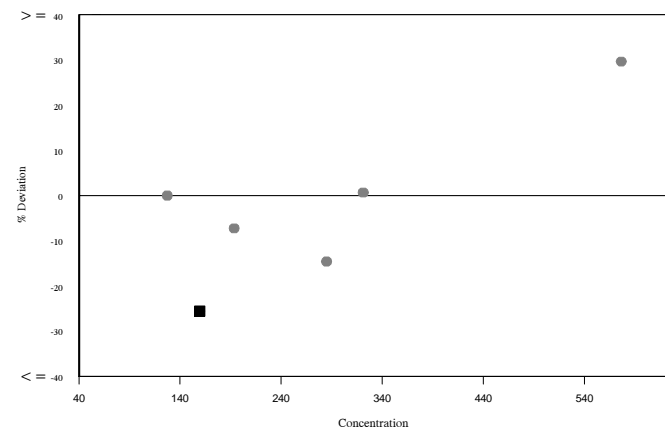
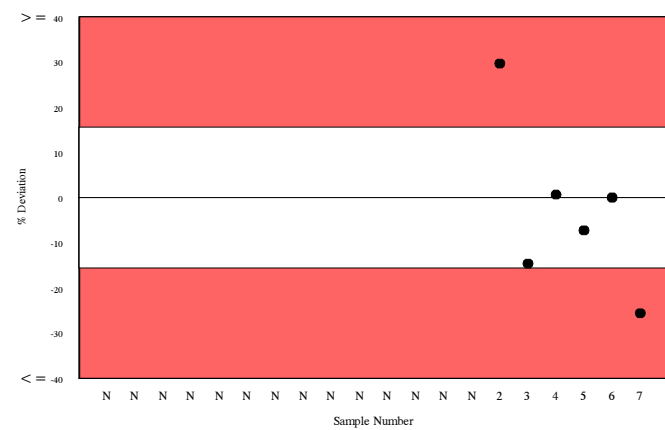
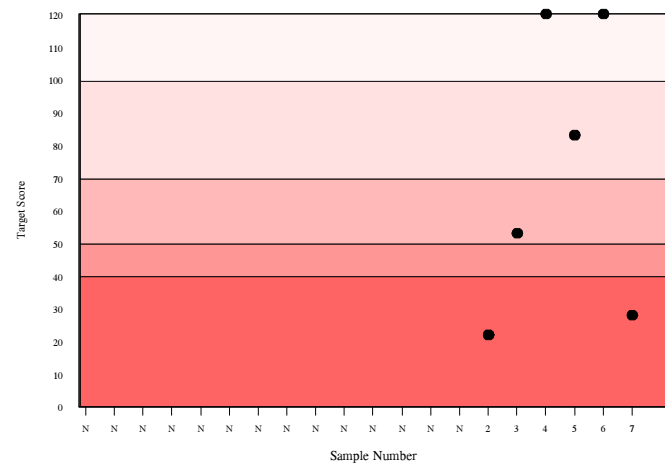
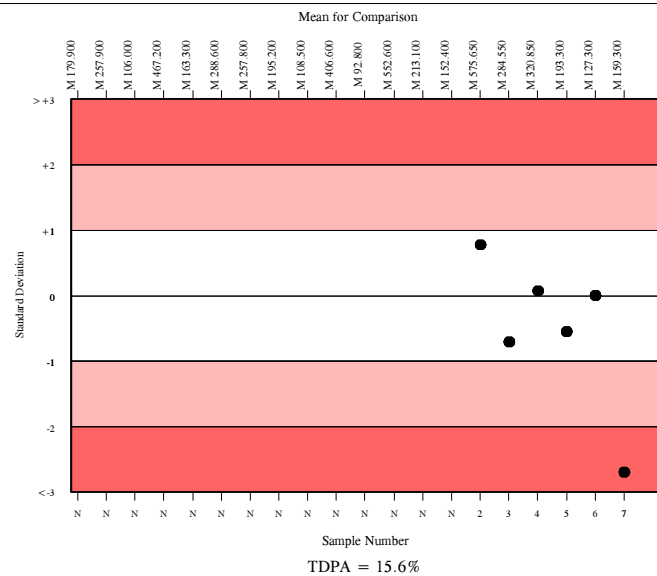
▲ Your Result	118.550	SDI	-2.70
		RMSDI	Too Few
■ Mean for Comparison	159.300	TS	28
		RMTS	Too Few
		%DEV	-25.6
		RM%DEV	Too Few

The mean for comparison is not statistically significant

Acceptable limits derived from Biological Variation	N/A
Acceptable limits of performance for RIQAS	15.60%
SDI in bottom 5% of peer group	
TS & %DEV outside limits	



Method	N	Mean	CV%	U _m
Beckman DxI 600 / 800	14	118.492	6.7	2.67
Active Inhibin A Elisa	4	155.575	8.4	8.21
Beckman Access	9	111.968	7.4	3.47
Perkin Elmer DELFIA Xpress/AutoDELFIA	2	169.266	10.2	15.29
Stat Fax Elisa Readers	1	159.300	0.0	0.00

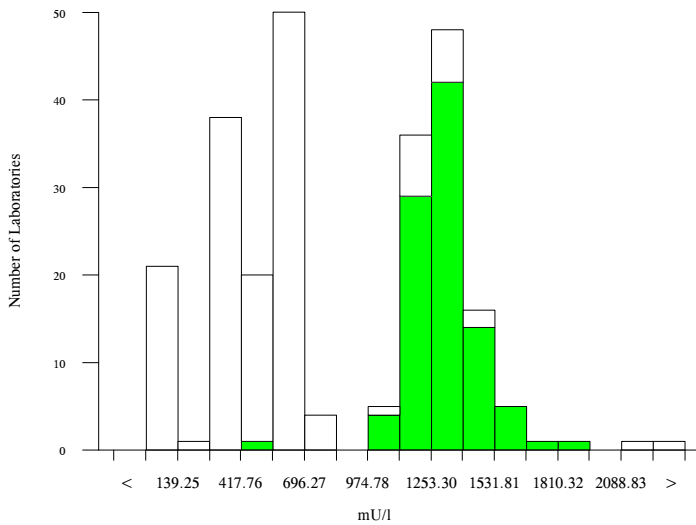


PAPP-A, mU/l

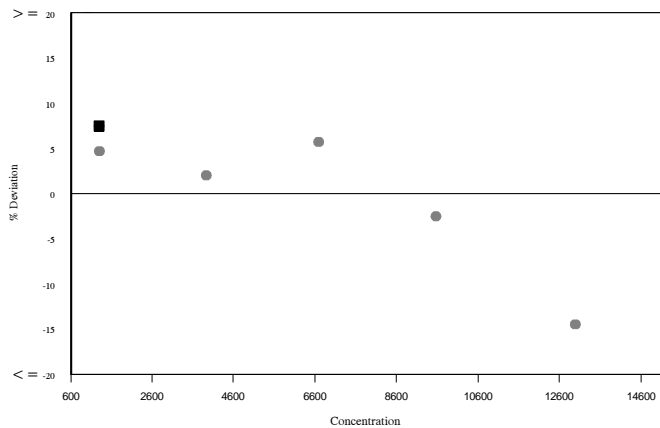
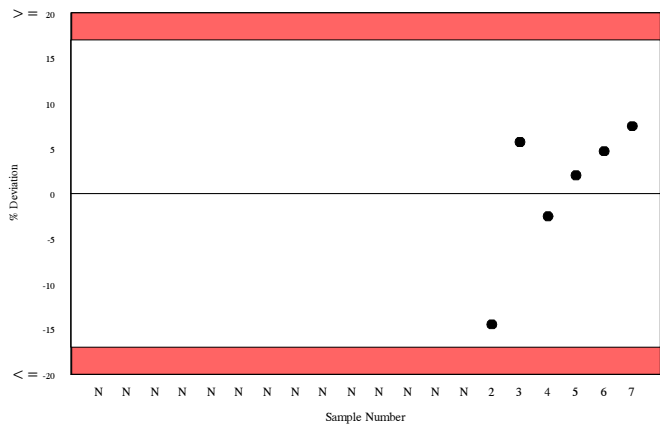
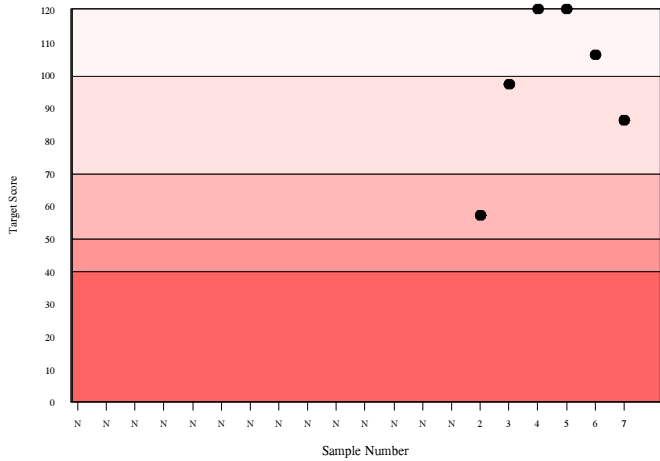
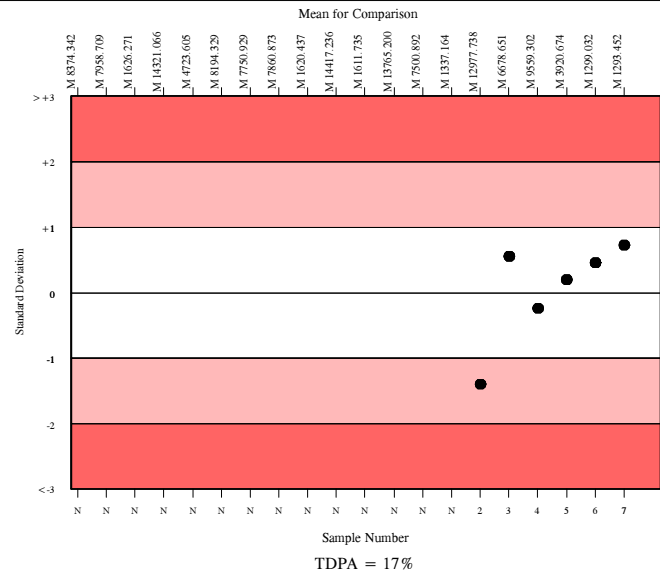
	N	Mean	CV%	U _m	SDPA	Exc.
All Methods	235	830.689	56.1	37.90	93.70a	13
Siemens/DPC Immulite 2000/2500	84	1293.452	7.4	13.10	133.60	13

▲ Your Result	1390.000	SDI	0.72
		RMSDI	Too Few
■ Mean for Comparison	1293.452	TS	86
		RMTS	Too Few
		%DEV	7.5
		RM%DEV	Too Few

Acceptable limits derived from Biological Variation	15.1%
Acceptable limits of performance for RIQAS	17.00%



Method	N	Mean	CV%	U _m
Siemens/DPC Immulite 2000/2500	84	1293.452	7.4	13.10
Perkin Elmer DELFIA Xpress/AutoDELFIA	30	379.817	6.8	5.90
Roche Cobas 6000/8000	30	589.290	4.3	5.80
Roche Cobas 4000/e411	21	587.271	5.5	8.80
Beckman DxI 600 / 800	17	33.357	7.5	0.70
Siemens/DPC Immulite 1000	14	1235.714	6.3	25.80
Brahms, Krytor	11	405.718	3.5	5.30
Beckman Access	3	32.063	9.0	2.00



Unconjugated estriol, ng/ml

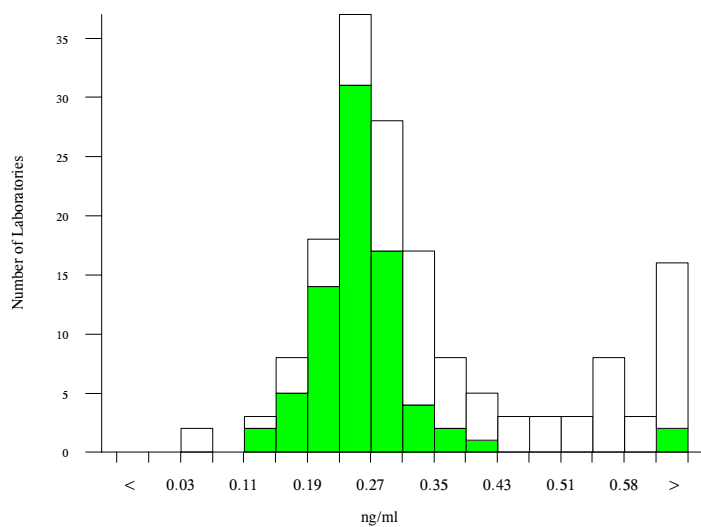
□ All Methods

■ DPC, Immulite 2000/2500

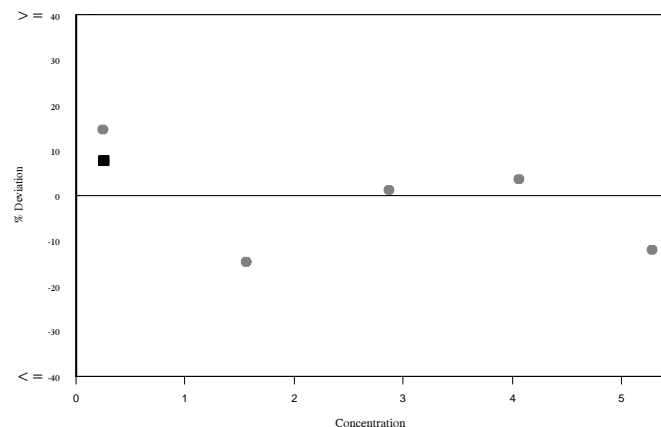
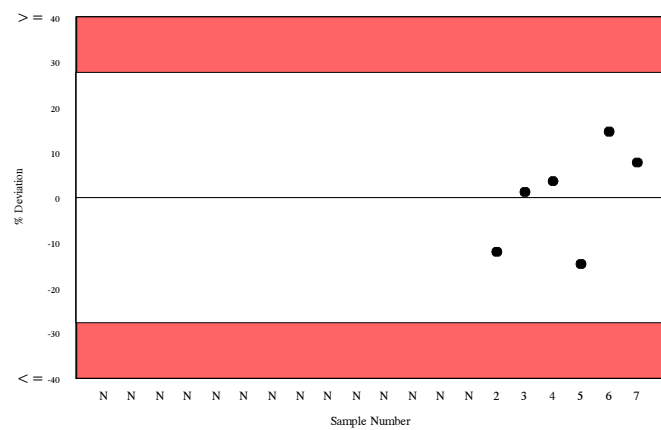
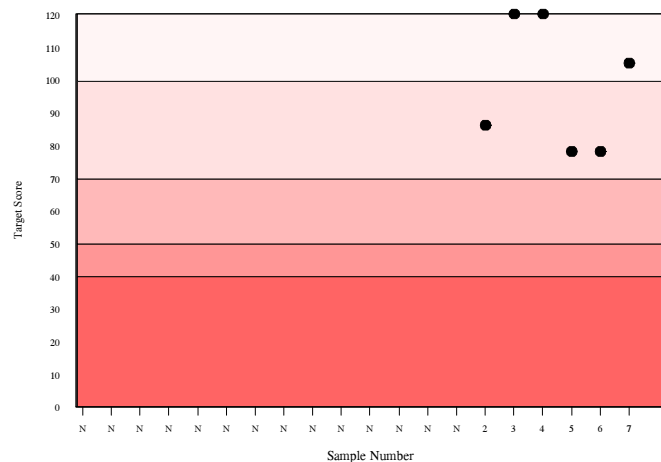
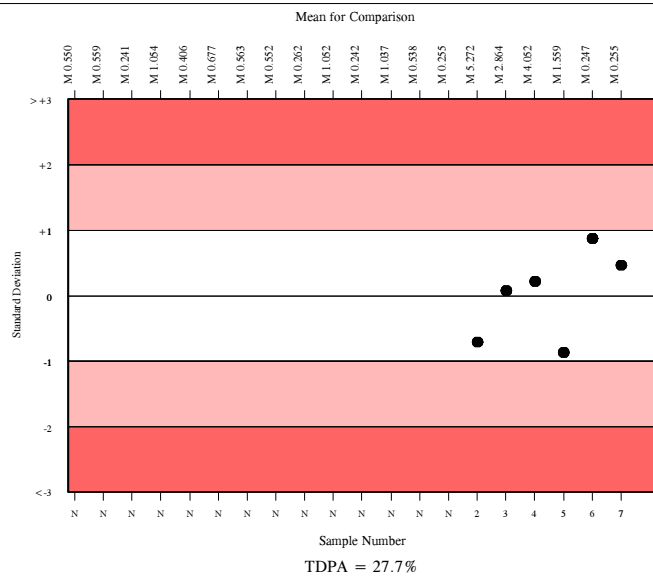
N	Mean	CV%	U _m	SDPA	Exc.
140	0.304	35.5	0.01	0.05	22
68	0.255	16.1	0.01	0.04	10

▲ Your Result	0.275	SDI	0.46
		RMSDI	Too Few
■ Mean for Comparison	0.255	TS	105
		RMTS	Too Few
		%DEV	7.8
		RM%DEV	Too Few

Acceptable limits derived from Biological Variation	N/A
Acceptable limits of performance for RIQAS	27.70%



Method	N	Mean	CV%	U _m
DPC, Immulite 2000/2500	68	0.255	16.1	0.01
Beckman Dxl 600 / 800	25	0.336	10.9	0.01
Perkin Elmer DELFIA Xpress/AutoDELFIA	23	0.581	9.2	0.01
DPC, Immulite 1000	13	0.236	21.0	0.02
Beckman Access	8	0.403	15.6	0.03
Brahms, Kryptor	2	0.075	0.1	0.00
DRG Elisa	2	1.100	12.9	0.12



Analyte	Mean for Comparison	Your Result	SDI	RMSDI	%DEV	RM%DEV	TS	RMTS	Performance
AFP	13.592	14.200	0.61	Too Few	4.5	Too Few	93	Too Few	
hCG, free beta	18.834	18.700	-0.07	Too Few	-0.7	Too Few	120	Too Few	
hCG, total	9.592	9.350	-0.22	Too Few	-2.5	Too Few	120	Too Few	
Inhibin A	159.300	118.550	<u>-2.70</u>	Too Few	<u>-25.6</u>	Too Few	<u>28</u>	Too Few	▲
PAPP-A	1293.452	1390.000	0.72	Too Few	7.5	Too Few	86	Too Few	
Unconjugated estriol	0.255	0.275	0.46	Too Few	7.8	Too Few	105	Too Few	

ORMSDI N/A

ORM%DEV N/A

ORMTS N/A

END OF REPORT

